



SZABO SCANDIC

Part of Europa Biosite

Produktinformation



Forschungsprodukte & Biochemikalien



Zellkultur & Verbrauchsmaterial



Diagnostik & molekulare Diagnostik



Laborgeräte & Service

Weitere Information auf den folgenden Seiten!
See the following pages for more information!



Lieferung & Zahlungsart

siehe unsere [Liefer- und Versandbedingungen](#)

Zuschläge

- Mindermengenzuschlag
- Trockeneiszuschlag
- Gefahrgutzuschlag
- Expressversand

SZABO-SCANDIC HandelsgmbH

Quellenstraße 110, A-1100 Wien

T. +43(0)1 489 3961-0

F. +43(0)1 489 3961-7

mail@szabo-scandic.com

www.szabo-scandic.com

[linkedin.com/company/szaboscandic](https://www.linkedin.com/company/szaboscandic) 

UK Office

Everest Biotech Ltd

Cherwell Innovation Centre
77 Heyford Park
Upper Heyford
Oxfordshire
OX25 5HD
UK

Enquiries:

info@everestbiotech.com

Sales:

sales@everestbiotech.com

Tech support:

support@everestbiotech.com

Tel: +44 (0)1869 238326

Fax: +44 (0)1869 238327

US Office

Everest Biotech c/o Abcore

405 Maple Street, Suite A106
Ramona,
CA 92065
USA

Inquiries:

info@everestbiotech.com

Sales:

usasales@everestbiotech.com

Tech support:

support@everestbiotech.com

Tel: 888-320-4628 (toll-free)

Fax: 888-841-9041

www.everestbiotech.com

**Research Use Only. Not for
diagnostic or therapeutic use.**

EB11053 - Goat Anti-TGFBR1 (aa50-63) Antibody

Size: 100µg specific antibody in 200µl



Target Protein

Principal Names: TGFBR1, transforming growth factor, beta receptor 1, AAT5, ACVRLK4, ALK-5, ALK5, LDS1A, LDS2A, SKR4, TGFR-1, TGF-beta receptor type I, TGF-beta receptor type-1, TGF-beta type I receptor, activin A receptor type II-like kinase, 53kD, activin A receptor type II-like kinase, 53kDa, activin receptor-like kinase 5, serine/threonine-protein kinase receptor R4, tbetaR-I, transforming growth factor beta receptor I, transforming growth factor, beta receptor I (activin A receptor type II-like kinase, 53kD), transforming growth factor-beta receptor type I, AAT5, activin A receptor type II-like kinase, 53kD, activin A receptor type II-like kinase, 53kDa, activin receptor-like kinase 5, ACVRLK4, ALK5, ALK-5, LDS1A, LDS2A, serine/threonine-protein kinase receptor R4, SKR4, tbetaR-I, TGF-beta receptor type I, TGF-beta receptor type-1, TGF-beta type I receptor, TGFR-1, transforming growth factor beta receptor I, transforming growth factor, beta receptor 1, transforming growth factor, beta receptor I (activin A receptor type II-like kinase, 53kD), transforming growth factor-beta receptor type I, TGFBR1

Official Symbol: TGFBR1

Accession Number(s): NP_004603.1; NP_001124388.1

Human GeneID(s): [7046](#)

Non-Human GeneID(s): 21812 (mouse), 29591 (rat)

Important Comments: This antibody is expected to recognize both reported isoforms (NP_004603.1; NP_001124388.1). The immunizing peptide represents part of a potential extracellular domain.

Immunogen

Peptide with sequence TDGLCFVSVTETTD, from the internal region of the protein sequence according to NP_004603.1; NP_001124388.1.

Please note the [peptide](#) is available for sale.

Purification and Storage

Purified from goat serum by ammonium sulphate precipitation followed by antigen affinity chromatography using the immunizing peptide.

Supplied at 0.5 mg/ml in Tris saline, 0.02% sodium azide, pH7.3 with 0.5% bovine serum albumin.

Aliquot and store at -20°C. Minimize freezing and thawing.

Applications Tested

Peptide ELISA: antibody detection limit dilution 1:64000.

Western blot: Approx 55kDa band observed in Rat Liver and Rat Lung lysates (calculated MW of 55.6kDa according to Rat NP_036907.2). Recommended concentration: 0.03-0.1µg/ml. Primary incubation 1 hour at room temperature.

IHC: Paraffin embedded Human Adrenal Gland and Small Intestine. Recommended concentration: 5µg/ml.

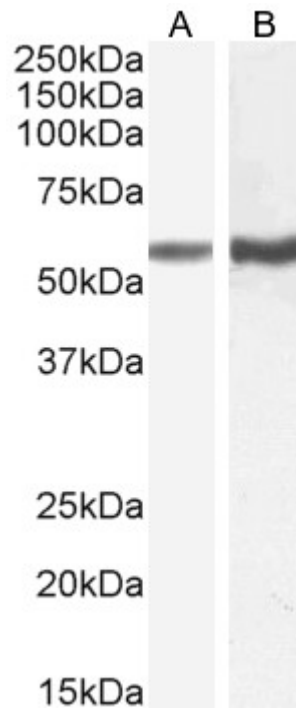
Flow Cytometry: Flow cytometric analysis of HeLa cells. Recommended concentration: 10ug/ml.

Immunofluorescence: This antibody is not recommended for IF testing.

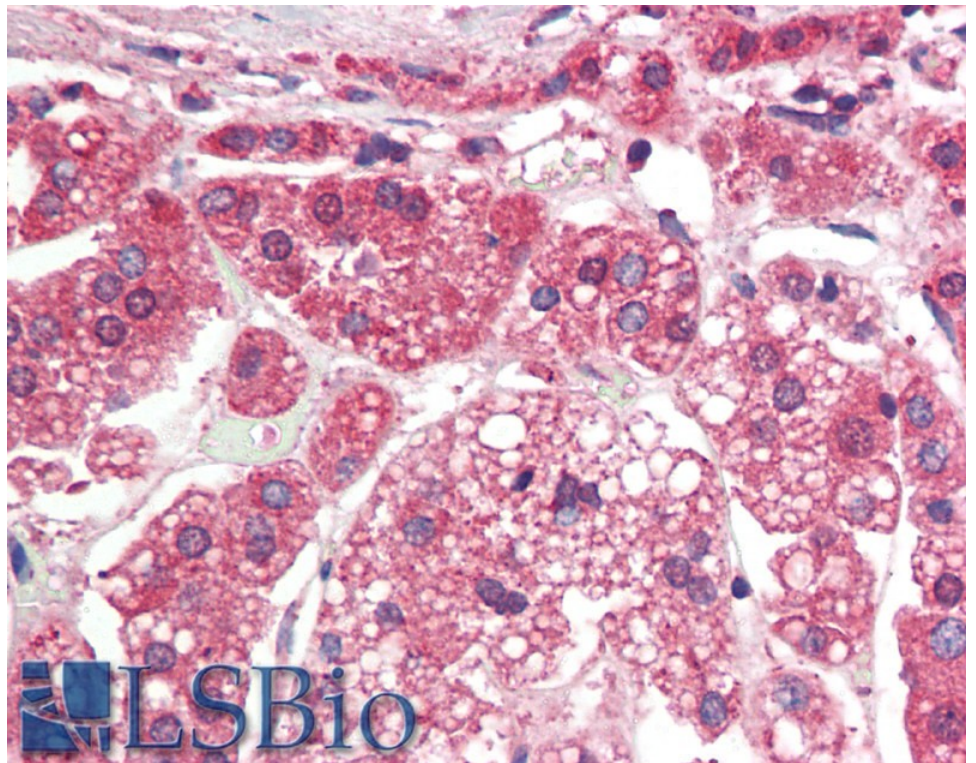
Species Reactivity

Tested: Human, Rat

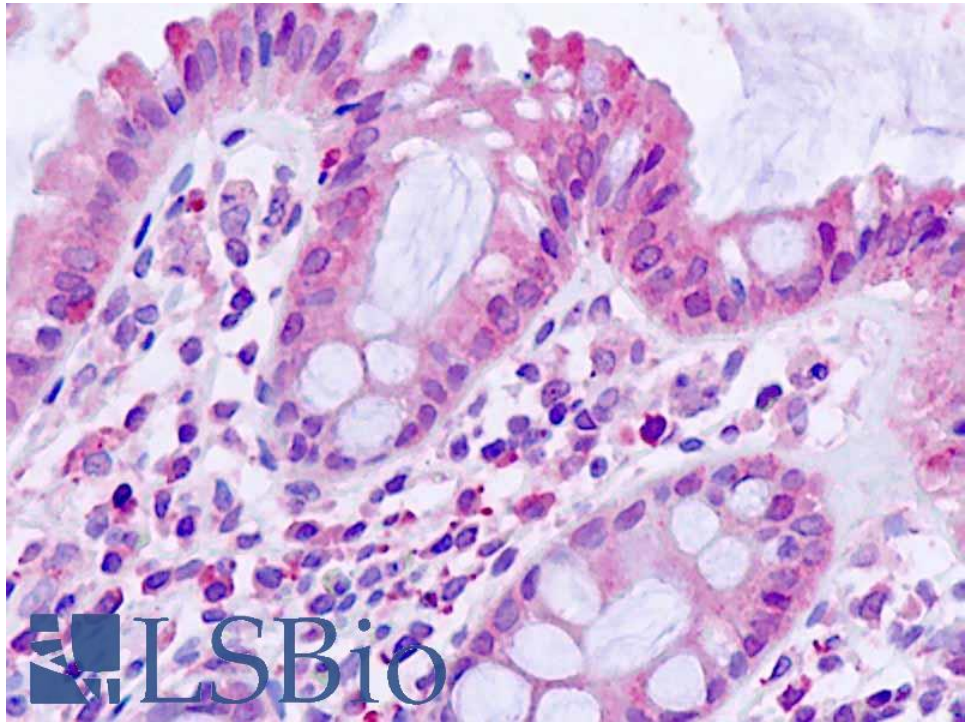
Expected from sequence similarity: Human, Mouse, Rat, Dog, Pig, Cow



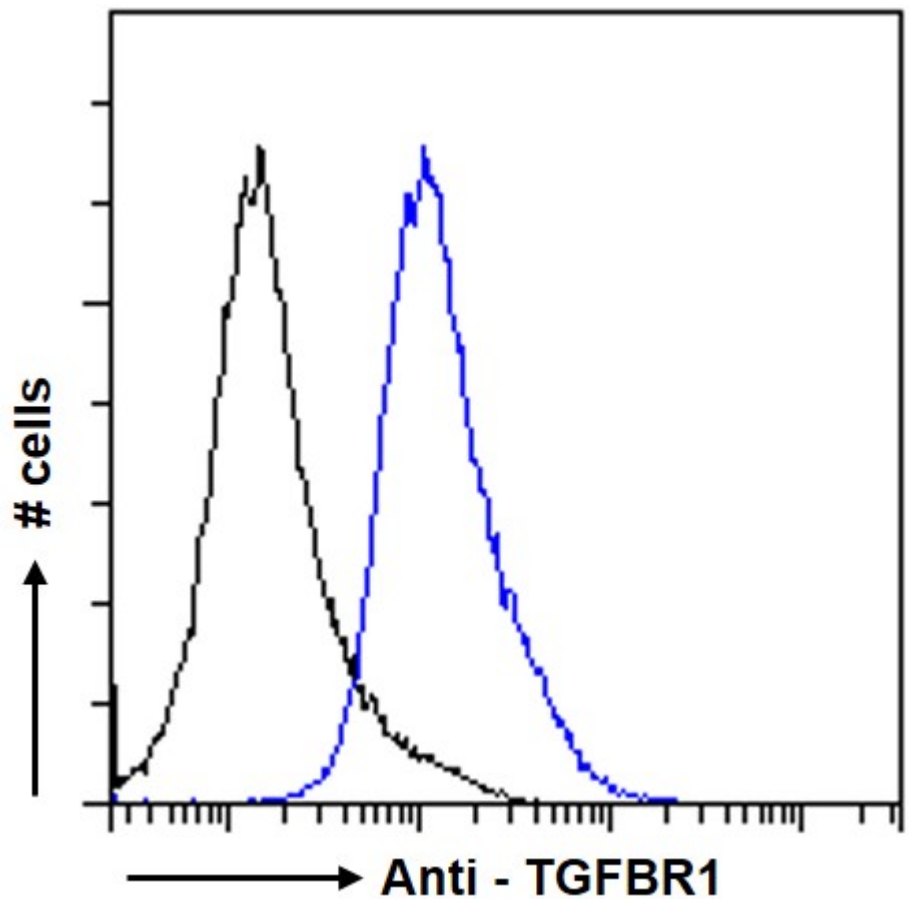
EB11053 (0.1 μ g/ml) staining of Rat Liver (A) and (0.03 μ g/ml) Lung (B) lysate (35 μ g protein in RIPA buffer).
Detected by chemiluminescence.



EB11053 (5 μ g/ml) staining of paraffin embedded Human Adrenal Gland. Steamed antigen retrieval with citrate buffer pH 6, AP-staining.



EB11053 (5µg/ml) staining of paraffin embedded Human Small Intestine. Steamed antigen retrieval with citrate buffer pH 6, AP-staining.



EB11053 Flow cytometric analysis of paraformaldehyde fixed HeLa cells (blue line), permeabilized with 0.5% Triton. Primary incubation 1hr (10ug/ml) followed by Alexa Fluor 488 secondary antibody (1ug/ml). IgG control: Unimmunized goat IgG (black line) followed by Alexa Fluor 488 secondary antibody.