



SZABO SCANDIC

Part of Europa Biosite

Produktinformation



Forschungsprodukte & Biochemikalien



Zellkultur & Verbrauchsmaterial



Diagnostik & molekulare Diagnostik



Laborgeräte & Service

Weitere Information auf den folgenden Seiten!
See the following pages for more information!



Lieferung & Zahlungsart

siehe unsere [Liefer- und Versandbedingungen](#)

Zuschläge

- Mindermengenzuschlag
- Trockeneiszuschlag
- Gefahrgutzuschlag
- Expressversand

SZABO-SCANDIC HandelsgmbH

Quellenstraße 110, A-1100 Wien

T. +43(0)1 489 3961-0

F. +43(0)1 489 3961-7

mail@szabo-scandic.com

www.szabo-scandic.com

[linkedin.com/company/szaboscandic](https://www.linkedin.com/company/szaboscandic) 



UK Office

Everest Biotech Ltd

Cherwell Innovation Centre
77 Heyford Park
Upper Heyford
Oxfordshire
OX25 5HD
UK

Enquiries:

info@everestbiotech.com

Sales:

sales@everestbiotech.com

Tech support:

support@everestbiotech.com

Tel: +44 (0)1869 238326

Fax: +44 (0)1869 238327

US Office

Everest Biotech c/o Abcore

405 Maple Street, Suite A106
Ramona,
CA 92065
USA

Inquiries:

info@everestbiotech.com

Sales:

usasales@everestbiotech.com

Tech support:

support@everestbiotech.com

Tel: 888-320-4628 (toll-free)

Fax: 888-841-9041

www.everestbiotech.com

**Research Use Only. Not for
diagnostic or therapeutic use.**

EB11059 - Goat Anti-ADAM12 (aa225-239) Antibody

Size: 100µg specific antibody in 200µl



Target Protein

Principal Names: ADAM metalloproteinase domain 12, disintegrin and metalloproteinase domain-containing protein 12, MCMP, MCMPItna, meltrin-alpha, MLTN, MLTNA, ADAM12

Official Symbol: ADAM12

Accession Number(s): NP_003465.3; NP_067673.2

Human GeneID(s): [8038](#)

Non-Human GeneID(s): 11489 (mouse), 679837 (rat)

Important Comments: This antibody is expected to recognize both reported isoforms (NP_003465.3; NP_067673.2).

Immunogen

Peptide with sequence C-REFQRQGKDLEKVKQ, from the internal region of the protein sequence according to NP_003465.3; NP_067673.2.

Please note the [peptide](#) is available for sale.

Purification and Storage

Purified from goat serum by ammonium sulphate precipitation followed by antigen affinity chromatography using the immunizing peptide.

Supplied at 0.5 mg/ml in Tris saline, 0.02% sodium azide, pH7.3 with 0.5% bovine serum albumin.

Aliquot and store at -20°C. Minimize freezing and thawing.

Applications Tested

Peptide ELISA: antibody detection limit dilution 1:128000.

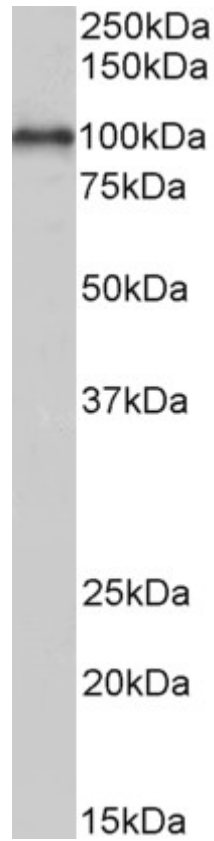
Western blot: Approx 100kDa band observed in Human Heart lysates and approx 90+60kDa bands observed in Mouse, Rat and Pig Heart lysates (calculated MW of 99.5kDa according to NP_003465.3 and of 80.4kDa according to NP_067673.2).

Recommended concentration: 0.1-0.3µg/ml.

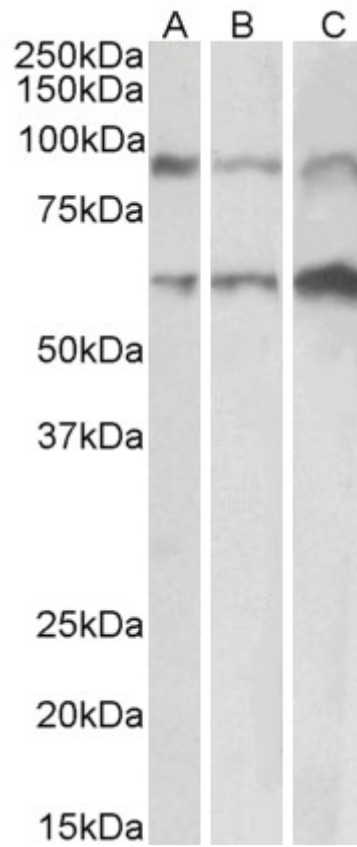
Species Reactivity

Tested: Human, Mouse, Rat, Pig

Expected from sequence similarity: Human, Mouse, Rat, Pig, Cow



EB11059 (0.1 μ g/ml) staining of Human Heart lysate (35 μ g protein in RIPA buffer). Primary incubation was 1 hour. Detected by chemiluminescence.



EB11059 (0.1 μ g/ml) staining of Mouse (A), Rat (B) and Pig (C) Heart lysate (35 μ g protein in RIPA buffer). Primary incubation was 1 hour. Detected by chemiluminescence.