



# SZABO SCANDIC

Part of Europa Biosite

## Produktinformation



Forschungsprodukte & Biochemikalien



Zellkultur & Verbrauchsmaterial



Diagnostik & molekulare Diagnostik



Laborgeräte & Service

Weitere Information auf den folgenden Seiten!  
See the following pages for more information!



### Lieferung & Zahlungsart

siehe unsere [Liefer- und Versandbedingungen](#)

### Zuschläge

- Mindermengenzuschlag
- Trockeneiszuschlag
- Gefahrgutzuschlag
- Expressversand

### SZABO-SCANDIC HandelsgmbH

Quellenstraße 110, A-1100 Wien

T. +43(0)1 489 3961-0

F. +43(0)1 489 3961-7

[mail@szabo-scandic.com](mailto:mail@szabo-scandic.com)

[www.szabo-scandic.com](http://www.szabo-scandic.com)

[linkedin.com/company/szaboscandic](https://www.linkedin.com/company/szaboscandic) 



## UK Office

### Everest Biotech Ltd

Cherwell Innovation Centre  
77 Heyford Park  
Upper Heyford  
Oxfordshire  
OX25 5HD  
UK

Enquiries:

[info@everestbiotech.com](mailto:info@everestbiotech.com)

Sales:

[sales@everestbiotech.com](mailto:sales@everestbiotech.com)

Tech support:

[support@everestbiotech.com](mailto:support@everestbiotech.com)

Tel: +44 (0)1869 238326

Fax: +44 (0)1869 238327

## US Office

### Everest Biotech c/o Abcore

405 Maple Street, Suite A106  
Ramona,  
CA 92065  
USA

Inquiries:

[info@everestbiotech.com](mailto:info@everestbiotech.com)

Sales:

[usasales@everestbiotech.com](mailto:usasales@everestbiotech.com)

Tech support:

[support@everestbiotech.com](mailto:support@everestbiotech.com)

Tel: 888-320-4628 (toll-free)

Fax: 888-841-9041

[www.everestbiotech.com](http://www.everestbiotech.com)

**Research Use Only. Not for  
diagnostic or therapeutic use.**

## EB11062 - Goat Anti-Hsd11b1 (mouse) Antibody

Size: 100µg specific antibody in 200µl



### Target Protein

**Principal Names:** 11-beta-HSD1, 11-beta-hydroxysteroid dehydrogenase 1, 11-DH, corticosteroid 11-beta-dehydrogenase isozyme 1, HDL, HSD11, HSD11B, HSD11L, hydroxysteroid (11-beta) dehydrogenase 1, short chain dehydrogenase/reductase family 26C, member 1, Hsd11b1

**Official Symbol:** Hsd11b1

**Accession Number(s):** NP\_032314.2

**Non-Human GeneID(s):** 15483 (mouse), 25116 (rat)

### Immunogen

Peptide with sequence C-TARSEEGLQKVVSRL, from the internal region of the protein sequence according to NP\_032314.2.

Please note the [peptide](#) is available for sale.

### Purification and Storage

Purified from goat serum by ammonium sulphate precipitation followed by antigen affinity chromatography using the immunizing peptide.

Supplied at 0.5 mg/ml in Tris saline, 0.02% sodium azide, pH7.3 with 0.5% bovine serum albumin.

Aliquot and store at -20°C. Minimize freezing and thawing.

### Applications Tested

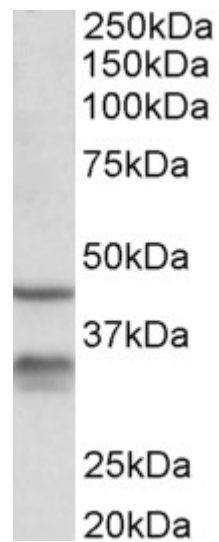
**Peptide ELISA:** antibody detection limit dilution 1:32000.

**Western blot:** Approx 32kDa band observed in Mouse Lung lysates (calculated MW of 32.4kDa according to NP\_032314.2). Recommended concentration: 0.3-1µg/ml. An additional band of unknown identity was also consistently observed at 45kDa. This band was successfully blocked by incubation with the immunizing peptide. However, it remained visible in a KO background.

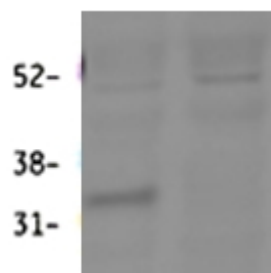
### Species Reactivity

**Tested:** Mouse

**Expected from sequence similarity:** Mouse, Rat



EB11062 (0.3 $\mu$ g/ml) staining of Mouse Lung lysate (35 $\mu$ g protein in RIPA buffer). Primary incubation was 1 hour. Detected by chemiluminescence.



EB11062 (0.3 $\mu$ g/ml) staining of Mouse Lung lysate (60 $\mu$ g protein in RIPA buffer). First lane shows wildtype and second lane shows knockout background. Primary incubation was overnight. Detected by fluorescence with Li-cor). Data obtained from Prof. K. Chapman and Zhenguang Zhang, Centre for Cardiovascular Sciences, Queen's Medical Research Institute, Edinburgh, UK