



SZABO SCANDIC

Part of Europa Biosite

Produktinformation



Forschungsprodukte & Biochemikalien



Zellkultur & Verbrauchsmaterial



Diagnostik & molekulare Diagnostik



Laborgeräte & Service

Weitere Information auf den folgenden Seiten!
See the following pages for more information!



Lieferung & Zahlungsart

siehe unsere [Liefer- und Versandbedingungen](#)

Zuschläge

- Mindermengenzuschlag
- Trockeneiszuschlag
- Gefahrgutzuschlag
- Expressversand

SZABO-SCANDIC HandelsgmbH

Quellenstraße 110, A-1100 Wien

T. +43(0)1 489 3961-0

F. +43(0)1 489 3961-7

mail@szabo-scandic.com

www.szabo-scandic.com

[linkedin.com/company/szaboscandic](https://www.linkedin.com/company/szaboscandic) 



UK Office

Everest Biotech Ltd

Cherwell Innovation Centre
77 Heyford Park
Upper Heyford
Oxfordshire
OX25 5HD
UK

Enquiries:

info@everestbiotech.com

Sales:

sales@everestbiotech.com

Tech support:

support@everestbiotech.com

Tel: +44 (0)1869 238326

Fax: +44 (0)1869 238327

US Office

Everest Biotech c/o Abcore

405 Maple Street, Suite A106
Ramona,
CA 92065
USA

Inquiries:

info@everestbiotech.com

Sales:

usasales@everestbiotech.com

Tech support:

support@everestbiotech.com

Tel: 888-320-4628 (toll-free)

Fax: 888-841-9041

www.everestbiotech.com

**Research Use Only. Not for
diagnostic or therapeutic use.**

EB11136 - Goat Anti-PRODH (aa112-134) Antibody

Size: 100µg specific antibody in 200µl



Target Protein

Principal Names: FLJ33744, HSPOX2, MGC148078, MGC148079,

OTTHUMP00000196496, OTTHUMP00000196497, p53-induced gene 6 protein, PIG6, POX, PRODH1, PRODH2, proline dehydrogenase (oxidase) 1, proline dehydrogenase, mitochondrial, proline oxidase 2, proline oxidase, mitochondrial, SCZD4, TP53I6, tumor protein p53 inducible protein 6, PRODH

Official Symbol: PRODH

Accession Number(s): NP_057419.4; NP_001182155.1

Human GeneID(s): [5625](#)

Important Comments: This antibody is expected to recognize both reported isoforms (NP_057419.4; NP_001182155.1).

Immunogen

Peptide with sequence C-EDQESIQPLLRHYR, from the internal region of the protein sequence according to NP_057419.4; NP_001182155.1.

Please note the [peptide](#) is available for sale.

Purification and Storage

Purified from goat serum by ammonium sulphate precipitation followed by antigen affinity chromatography using the immunizing peptide.

Supplied at 0.5 mg/ml in Tris saline, 0.02% sodium azide, pH7.3 with 0.5% bovine serum albumin.

Aliquot and store at -20°C. Minimize freezing and thawing.

Applications Tested

Peptide ELISA: antibody detection limit dilution 1:16000.

Western blot: Approx75+55kDa bands observed in Human Brain (Cerebellum and Substantia nigra) lysates (calculated MW of 68.0kDa according to NP_057419.4 and of 56.2kDa according to NP_001182155.1). Recommended concentration: 0.3-1µg/ml.

Species Reactivity

Tested: Human

Expected from sequence similarity: Human

Specific Reference

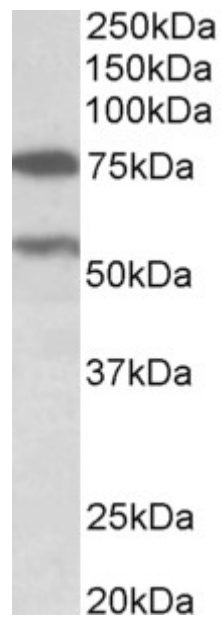
This antibody has been successfully used in Western blot on Human:

Zareba I, Surazynski A, Chrusciel M, Miltyk W, Doroszko M, Rahman N, Palka J.

Functional Consequences of Intracellular Proline Levels Manipulation Affecting PRODH/POX-Dependent a Novel in Vitro Cell Culture Model.

Cell Physiol Biochem. 2017 Sep 22;43(2):670-684.

PMID: 28942439



EB11136 (0.3 μ g/ml) staining of Human Cerebellum lysate (35 μ g protein in RIPA buffer). Primary incubation was 1 hour. Detected by chemiluminescence.