



SZABO SCANDIC

Part of Europa Biosite

Produktinformation



Forschungsprodukte & Biochemikalien



Zellkultur & Verbrauchsmaterial



Diagnostik & molekulare Diagnostik



Laborgeräte & Service

Weitere Information auf den folgenden Seiten!
See the following pages for more information!



Lieferung & Zahlungsart

siehe unsere [Liefer- und Versandbedingungen](#)

Zuschläge

- Mindermengenzuschlag
- Trockeneiszuschlag
- Gefahrgutzuschlag
- Expressversand

SZABO-SCANDIC HandelsgmbH

Quellenstraße 110, A-1100 Wien

T. +43(0)1 489 3961-0

F. +43(0)1 489 3961-7

mail@szabo-scandic.com

www.szabo-scandic.com

[linkedin.com/company/szaboscandic](https://www.linkedin.com/company/szaboscandic) 



UK Office

Everest Biotech Ltd

Cherwell Innovation Centre
77 Heyford Park
Upper Heyford
Oxfordshire
OX25 5HD
UK

Enquiries:

info@everestbiotech.com

Sales:

sales@everestbiotech.com

Tech support:

support@everestbiotech.com

Tel: +44 (0)1869 238326

Fax: +44 (0)1869 238327

US Office

Everest Biotech c/o Abcore

405 Maple Street, Suite A106
Ramona,
CA 92065
USA

Inquiries:

info@everestbiotech.com

Sales:

usasales@everestbiotech.com

Tech support:

support@everestbiotech.com

Tel: 888-320-4628 (toll-free)

Fax: 888-841-9041

www.everestbiotech.com

**Research Use Only. Not for
diagnostic or therapeutic use.**

EB11158 - Goat Anti-Amyloid beta peptide (aa1-16) Antibody

Size: 100µg specific antibody in 200µl



Target Protein

Principal Names: AAA, ABETA, ABPP, AD1, alzheimer disease amyloid protein, amyloid beta (A4) precursor protein, amyloid beta A4 protein, APPI, beta-amyloid peptide, cerebral vascular amyloid peptide, CTFgamma, CVAP, OTTHUMP0000096096, peptidase nexin-II, PN2, PN-II, preA4, protease nexin-II, APP

Official Symbol: APP

Accession Number(s): NP_000475.1; NP_958816.1; NP_958817.1; NP_001129601.1; NP_001129602.1

Human GeneID(s): [351](#)

Important Comments: This antibody is expected to recognize all reported isoforms of APP (NP_000475.1; NP_958816.1; NP_958817.1; NP_001129601.1; NP_001129602.1) and to recognize all lengths of the Amyloid beta peptide.

Immunogen

Peptide with sequence DAEFRHDSGYEVHHQK-C, from the N Terminus of the protein sequence according to NP_000475.1; NP_958816.1; NP_958817.1; NP_001129601.1; NP_001129602.1.

Please note the [peptide](#) is available for sale.

Purification and Storage

Purified from goat serum by ammonium sulphate precipitation followed by antigen affinity chromatography using the immunizing peptide.

Supplied at 0.5 mg/ml in Tris saline, 0.02% sodium azide, pH7.3 with 0.5% bovine serum albumin.

Aliquot and store at -20°C. Minimize freezing and thawing.

Applications Tested

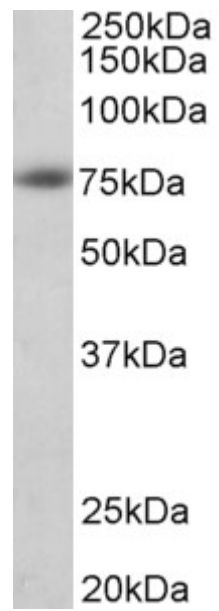
Peptide ELISA: antibody detection limit dilution 1:8000.

Western blot: Approx 75kDa band observed in Human Brain (Cerebral and Frontal cortex) lysates (calculated MW of 78.7kDa according to NP_958817.1 and 72.6 according to NP_001129601.1). Recommended concentration: 1-3µg/ml. Primary incubation was 1 hour.

Species Reactivity

Tested: Human

Expected from sequence similarity: Human, Dog, Pig, Cow



EB11158 (1 μ g/ml) staining of Human Cerebral Cortex lysate (35 μ g protein in RIPA buffer). Detected by chemiluminescence.