



SZABO SCANDIC

Part of Europa Biosite

Produktinformation



Forschungsprodukte & Biochemikalien



Zellkultur & Verbrauchsmaterial



Diagnostik & molekulare Diagnostik



Laborgeräte & Service

Weitere Information auf den folgenden Seiten!
See the following pages for more information!



Lieferung & Zahlungsart

siehe unsere [Liefer- und Versandbedingungen](#)

Zuschläge

- Mindermengenzuschlag
- Trockeneiszuschlag
- Gefahrgutzuschlag
- Expressversand

SZABO-SCANDIC HandelsgmbH

Quellenstraße 110, A-1100 Wien

T. +43(0)1 489 3961-0

F. +43(0)1 489 3961-7

mail@szabo-scandic.com

www.szabo-scandic.com

[linkedin.com/company/szaboscandic](https://www.linkedin.com/company/szaboscandic) 



UK Office

Everest Biotech Ltd

Cherwell Innovation Centre
77 Heyford Park
Upper Heyford
Oxfordshire
OX25 5HD
UK

Enquiries:

info@everestbiotech.com

Sales:

sales@everestbiotech.com

Tech support:

support@everestbiotech.com

Tel: +44 (0)1869 238326

Fax: +44 (0)1869 238327

US Office

Everest Biotech c/o Abcore

405 Maple Street, Suite A106
Ramona,
CA 92065
USA

Inquiries:

info@everestbiotech.com

Sales:

usasales@everestbiotech.com

Tech support:

support@everestbiotech.com

Tel: 888-320-4628 (toll-free)

Fax: 888-841-9041

www.everestbiotech.com

**Research Use Only. Not for
diagnostic or therapeutic use.**

EB11166 - Goat Anti-Atrial natriuretic factor Antibody

Size: 100µg specific antibody in 200µl



Target Protein

Principal Names: ANF, ANP, ATRFB6, atrial natriuretic factor, atriopeptin, cardionatrin, CDD-ANF, natriuretic peptide A, natriuretic peptide precursor A, PND, prepronatriodilatin, NPPA

Official Symbol: NPPA

Accession Number(s): NP_006163.1

Human GeneID(s): [4878](#)

Non-Human GeneID(s): 230899 (mouse), 24602 (rat)

Important Comments: The immunizing peptide represents aa137-150 of the precursor NPPA.

Immunogen

Peptide with sequence RIGAQSLGCSNFR, from the C Terminus of the protein sequence according to NP_006163.1.

Please note the [peptide](#) is available for sale.

Purification and Storage

Purified from goat serum by ammonium sulphate precipitation followed by antigen affinity chromatography using the immunizing peptide.

Supplied at 0.5 mg/ml in Tris saline, 0.02% sodium azide, pH7.3 with 0.5% bovine serum albumin.

Aliquot and store at -20°C. Minimize freezing and thawing.

Applications Tested

Peptide ELISA: antibody detection limit dilution 1:32000.

Western blot: Approx 19kDa band observed in Mouse and Rat Heart lysates (calculated MW of 16.4kDa according to Human precursor NP_006163.1 and 16.6kDa according to Mouse precursor NP_032751.1). Recommended concentration: 0.01-0.03µg/ml.

IHC: In paraffin embedded Human Heart shows vesicular staining inside the cardiac fibrils, accumulating towards the cell membrane. Recommended concentration, 5-10µg/ml.

Species Reactivity

Tested: Human, Mouse, Rat

Expected from sequence similarity: Human, Mouse, Rat, Dog, Pig, Cow

Specific Reference

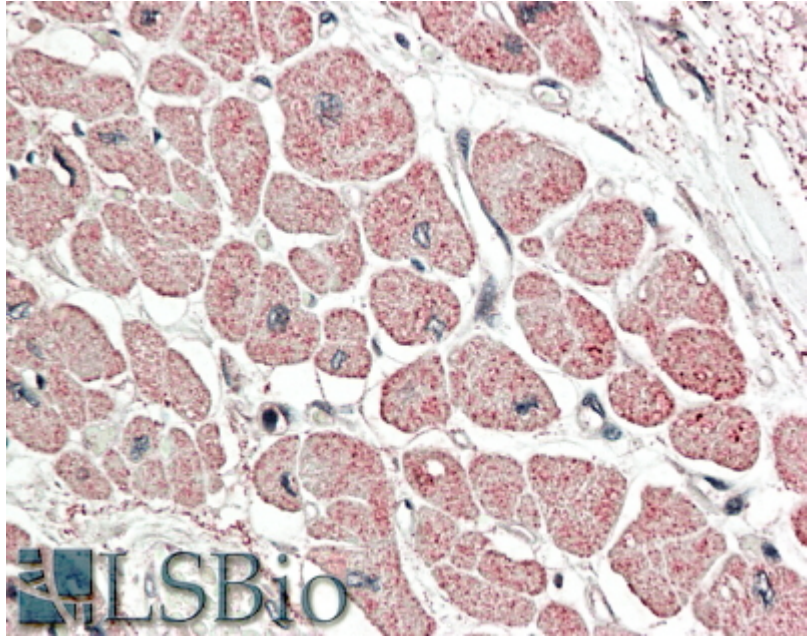
This antibody has been successfully used in Western blot on Mouse:

Benitez-Amaro A, Revuelta-López E, Bornachea O, Cedó L, Veá À, Herrero L, Roglans N, Soler-Botija C, de Gonzalo-Calvo D, Nasarre L, Camino-López S, García E, Mato E, Blanco-Vaca F, Bayes-Genis A, Sebastian D, Laguna JC, Serra D, Zorzano A, Escola-Gil JC, Llorente-Cortes V

Low-density lipoprotein receptor-related protein 1 deficiency in cardiomyocytes reduces susceptibility to insulin resistance and obesity

Metabolism. 2020 Feb 26;106:154191.

PMID: 32112822



EB11166 (5µg/ml) staining of paraffin embedded Human Heart. Steamed antigen retrieval with citrate buffer pH 6, AP-staining.



EB11166 (0.01µg/ml) staining of Mouse Heart lysate (35µg protein in RIPA buffer). Primary incubation was 1 hour. Detected by chemiluminescence.