



SZABO SCANDIC

Part of Europa Biosite

Produktinformation



Forschungsprodukte & Biochemikalien



Zellkultur & Verbrauchsmaterial



Diagnostik & molekulare Diagnostik



Laborgeräte & Service

Weitere Information auf den folgenden Seiten!
See the following pages for more information!



Lieferung & Zahlungsart

siehe unsere [Liefer- und Versandbedingungen](#)

Zuschläge

- Mindermengenzuschlag
- Trockeneiszuschlag
- Gefahrgutzuschlag
- Expressversand

SZABO-SCANDIC HandelsgmbH

Quellenstraße 110, A-1100 Wien

T. +43(0)1 489 3961-0

F. +43(0)1 489 3961-7

mail@szabo-scandic.com

www.szabo-scandic.com

[linkedin.com/company/szaboscandic](https://www.linkedin.com/company/szaboscandic) 



UK Office

Everest Biotech Ltd

Cherwell Innovation Centre
77 Heyford Park
Upper Heyford
Oxfordshire
OX25 5HD
UK

Enquiries:

info@everestbiotech.com

Sales:

sales@everestbiotech.com

Tech support:

support@everestbiotech.com

Tel: +44 (0)1869 238326

Fax: +44 (0)1869 238327

US Office

Everest Biotech c/o Abcore

405 Maple Street, Suite A106
Ramona,
CA 92065
USA

Inquiries:

info@everestbiotech.com

Sales:

usasales@everestbiotech.com

Tech support:

support@everestbiotech.com

Tel: 888-320-4628 (toll-free)

Fax: 888-841-9041

www.everestbiotech.com

**Research Use Only. Not for
diagnostic or therapeutic use.**

EB11171 - Goat Anti-Cytochrome P450 1A2 (mouse) Antibody

Size: 100µg specific antibody in 200µl



Target Protein

Principal Names: aromatic compound inducible, CP12, Cyp1a1, CYPIA2, cytochrome P450 1A2, cytochrome P450 family 1 subfamily a polypeptide 1, cytochrome P450, 1a2, aromatic compound inducible, cytochrome P450, family 1, subfamily A, polypeptide 2, cytochrome P450-P2, cytochrome P450-P3, P450-3, Cyp1a2

Official Symbol: Cyp1a2

Accession Number(s): NP_034123.1

Non-Human GeneID(s): 13077 (mouse), 24297 (rat)

Important Comments: This antibody is not expected to cross-react to the similar P450 1A1.

Immunogen

Peptide with sequence C-HSENYKDNGGLIPEEK, from the internal region of the protein sequence according to NP_034123.1.

Please note the [peptide](#) is available for sale.

Purification and Storage

Purified from goat serum by ammonium sulphate precipitation followed by antigen affinity chromatography using the immunizing peptide.

Supplied at 0.5 mg/ml in Tris saline, 0.02% sodium azide, pH7.3 with 0.5% bovine serum albumin.

Aliquot and store at -20°C. Minimize freezing and thawing.

Applications Tested

Peptide ELISA: antibody detection limit dilution 1:32000.

Western blot: Approx 60kDa band observed in Mouse fetal Liver lysates and approx. 55kDa in Human Liver and Lung lysates (calculated MW of 58.4kDa according to Human NP_000752.2 and 58.2kDa according to Mouse NP_034123.1). Recommended concentration: 0.3-1µg/ml. Primary incubation was 1 hour. This antibody has been successfully used in WB on Rat Liver lysates, PMID: 35094979.

Species Reactivity

Tested: Human, Mouse, Rat

Expected from sequence similarity: Mouse, Rat

Specific Reference

This antibody has been successfully used in Western blot on Rat:

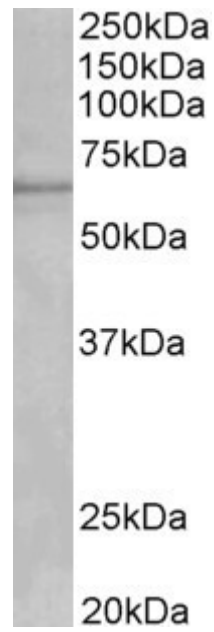
James R Reed, Jessie J Guidry, Wayne L Backes

Proteomic and Bioinformatics Analysis of Membrane Lipid Domains after Brij 98

Solubilization of Uninduced and Phenobarbital-Induced Rat Liver Microsomes: Defining the Membrane Localization of the P450 Enzyme System

Drug Metab Dispos. 2022 Apr;50(4):374-385.

PMID: 35094979



EB11171 (1µg/ml) staining of fetal Mouse Liver lysate (35µg protein in RIPA buffer). Detected by chemiluminescence.



EB11171 (0.5µg/ml) staining of Human Liver (A) and (1µg/ml) Lung (B) lysate (35µg protein in RIPA buffer). Detected by chemiluminescence.