



SZABO SCANDIC

Part of Europa Biosite

Produktinformation



Forschungsprodukte & Biochemikalien



Zellkultur & Verbrauchsmaterial



Diagnostik & molekulare Diagnostik



Laborgeräte & Service

Weitere Information auf den folgenden Seiten!
See the following pages for more information!



Lieferung & Zahlungsart

siehe unsere [Liefer- und Versandbedingungen](#)

Zuschläge

- Mindermengenzuschlag
- Trockeneiszuschlag
- Gefahrgutzuschlag
- Expressversand

SZABO-SCANDIC HandelsgmbH

Quellenstraße 110, A-1100 Wien

T. +43(0)1 489 3961-0

F. +43(0)1 489 3961-7

mail@szabo-scandic.com

www.szabo-scandic.com

[linkedin.com/company/szaboscandic](https://www.linkedin.com/company/szaboscandic) 



UK Office

Everest Biotech Ltd

Cherwell Innovation Centre
77 Heyford Park
Upper Heyford
Oxfordshire
OX25 5HD
UK

Enquiries:

info@everestbiotech.com

Sales:

sales@everestbiotech.com

Tech support:

support@everestbiotech.com

Tel: +44 (0)1869 238326

Fax: +44 (0)1869 238327

US Office

Everest Biotech c/o Abcore

405 Maple Street, Suite A106
Ramona,
CA 92065
USA

Inquiries:

info@everestbiotech.com

Sales:

usasales@everestbiotech.com

Tech support:

support@everestbiotech.com

Tel: 888-320-4628 (toll-free)

Fax: 888-841-9041

www.everestbiotech.com

**Research Use Only. Not for
diagnostic or therapeutic use.**

EB11190 - Goat Anti-NPR3 (aa520-533) Antibody

Size: 100µg specific antibody in 200µl



Target Protein

Principal Names: ANP-C, ANPRC, ANPR-C, atrial natriuretic peptide clearance receptor, atrial natriuretic peptide receptor 3, atrial natriuretic peptide receptor type C, GUCY2B, natriuretic peptide receptor C/guanylate cyclase C (atrionatriuretic peptide receptor C), NPRC, NPR-C, OTTHUMP00000197048, OTTHUMP00000220980, NPR3

Official Symbol: NPR3

Accession Number(s): NP_000899.1

Human GeneID(s): [4883](#)

Non-Human GeneID(s): 18162 (mouse), 25339 (rat)

Important Comments: The immunizing peptide represents the cytoplasmic part of the protein.

Immunogen

Peptide with sequence C-HRELREDSIRSHFS, from the C Terminus of the protein sequence according to NP_000899.1.

Please note the [peptide](#) is available for sale.

Purification and Storage

Purified from goat serum by ammonium sulphate precipitation followed by antigen affinity chromatography using the immunizing peptide.

Supplied at 0.5 mg/ml in Tris saline, 0.02% sodium azide, pH7.3 with 0.5% bovine serum albumin.

Aliquot and store at -20°C. Minimize freezing and thawing.

Applications Tested

Peptide ELISA: antibody detection limit dilution 1:16000.

Western blot: Approx 52kDa band observed in Human Placenta lysates (calculated MW of 59.8kDa according to NP_000899.1). Recommended concentration: 1-3µg/ml.

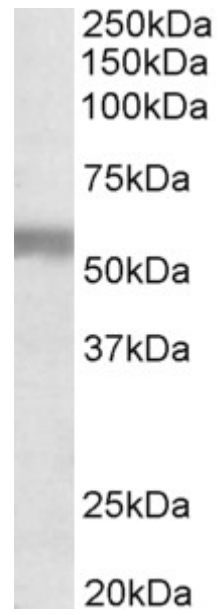
IHC: In paraffin embedded Human Kidney shows staining of brush borders in select PCT. Recommended concentration: 2-4µg/ml. Paraffin embedded Human Prostate.

Recommended concentration: 10µg/ml.

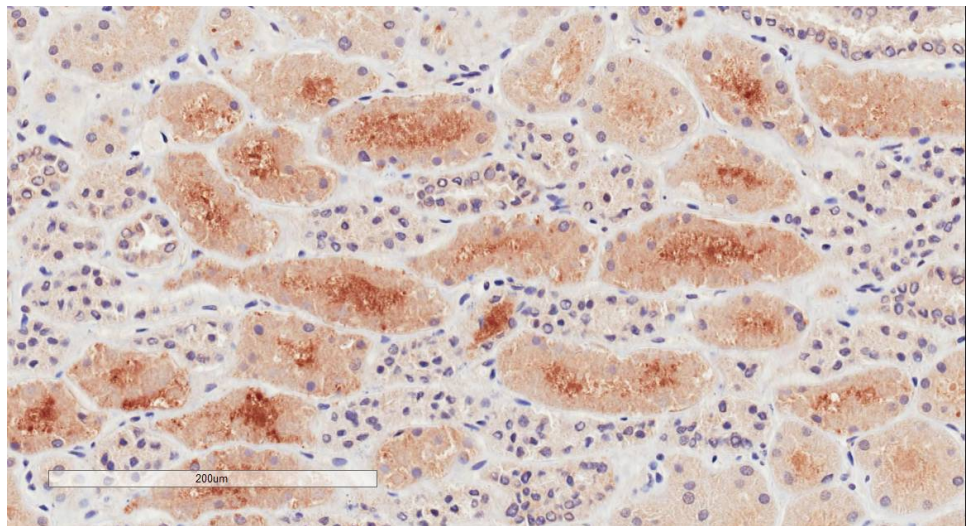
Species Reactivity

Tested: Human

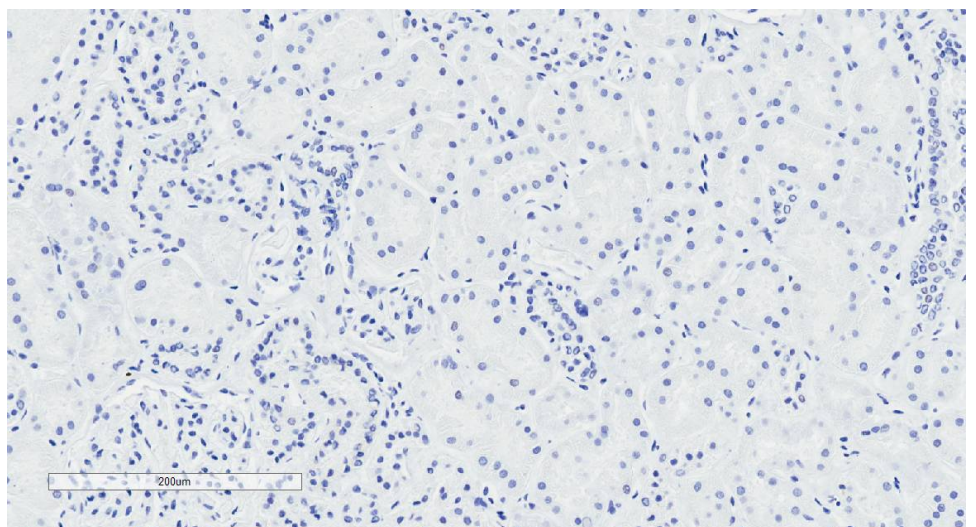
Expected from sequence similarity: Human, Mouse, Rat, Dog, Pig, Cow



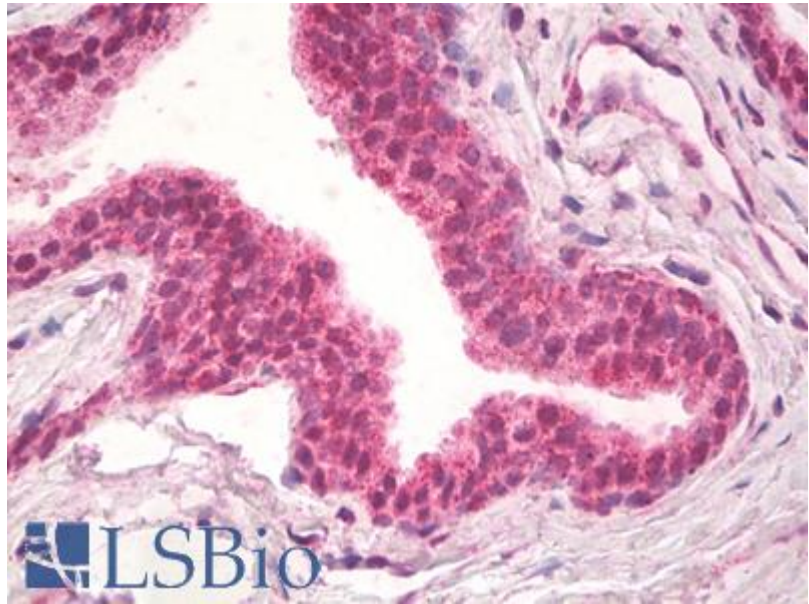
EB11190 (1 μ g/ml) staining of Human Placenta lysate (35 μ g protein in RIPA buffer). Primary incubation was 1 hour. Detected by chemiluminescence.



EB11190 (2 μ g/ml) staining of paraffin embedded Human Kidney. Microwaved antigen retrieval with citrate buffer pH 6, HRP-staining.



EB11190 Negative Control showing staining of paraffin embedded Human Kidney, with no primary antibody.



EB11190 (10 μ g/ml) staining of paraffin embedded Human Prostate. Steamed antigen retrieval with citrate buffer pH 6, AP-staining.