



SZABO SCANDIC

Part of Europa Biosite

Produktinformation



Forschungsprodukte & Biochemikalien



Zellkultur & Verbrauchsmaterial



Diagnostik & molekulare Diagnostik



Laborgeräte & Service

Weitere Information auf den folgenden Seiten!
See the following pages for more information!



Lieferung & Zahlungsart

siehe unsere [Liefer- und Versandbedingungen](#)

Zuschläge

- Mindermengenzuschlag
- Trockeneiszuschlag
- Gefahrgutzuschlag
- Expressversand

SZABO-SCANDIC HandelsgmbH

Quellenstraße 110, A-1100 Wien

T. +43(0)1 489 3961-0

F. +43(0)1 489 3961-7

mail@szabo-scandic.com

www.szabo-scandic.com

[linkedin.com/company/szaboscandic](https://www.linkedin.com/company/szaboscandic) 



UK Office

Everest Biotech Ltd

Cherwell Innovation Centre
77 Heyford Park
Upper Heyford
Oxfordshire
OX25 5HD
UK

Enquiries:

info@everestbiotech.com

Sales:

sales@everestbiotech.com

Tech support:

support@everestbiotech.com

Tel: +44 (0)1869 238326

Fax: +44 (0)1869 238327

US Office

Everest Biotech c/o Abcore

405 Maple Street, Suite A106
Ramona,
CA 92065
USA

Inquiries:

info@everestbiotech.com

Sales:

usasales@everestbiotech.com

Tech support:

support@everestbiotech.com

Tel: 888-320-4628 (toll-free)

Fax: 888-841-9041

www.everestbiotech.com

**Research Use Only. Not for
diagnostic or therapeutic use.**

EB11231 - Goat Anti-SOX11 (aa309-323) Antibody

Size: 100µg specific antibody in 200µl



Target Protein

Principal Names: SRY (sex determining region Y)-box 11, SRY (sex-determining region Y)-box 11, SRY-related HMG-box gene 11, transcription factor SOX-11, SOX11

Official Symbol: SOX11

Accession Number(s): NP_003099.1

Human GeneID(s): [6664](#)

Non-Human GeneID(s): 20666 (mouse), 84046 (rat)

Immunogen

Peptide with sequence C-SRLYYSFKNITKQHP, from the internal region of the protein sequence according to NP_003099.1.

Please note the [peptide](#) is available for sale.

Purification and Storage

Purified from goat serum by ammonium sulphate precipitation followed by antigen affinity chromatography using the immunizing peptide.

Supplied at 0.5 mg/ml in Tris saline, 0.02% sodium azide, pH7.3 with 0.5% bovine serum albumin.

Aliquot and store at -20°C. Minimize freezing and thawing.

Applications Tested

Peptide ELISA: antibody detection limit dilution 1:2000.

Western blot: Approx 65kDa band observed in lysates of cell lines Daudi, Jurkat and MOLT4 (calculated MW of 46.7kDa according to NP_003099.1). The observed molecular weight corresponds to earlier findings in literature with different antibodies (Dictor et al, Haematologica. 2009 Nov;94(11):1563-8. PMID: 19880779). Recommended concentration: 0.3-1µg/ml. Primary incubation was 1 hour. Preliminary testing was unsuccessful on NIH3T3, Mouse and Rat Brain for this particular batch.

Species Reactivity

Tested: Human

Expected from sequence similarity: Human, Mouse, Rat, Pig, Cow

Specific Reference

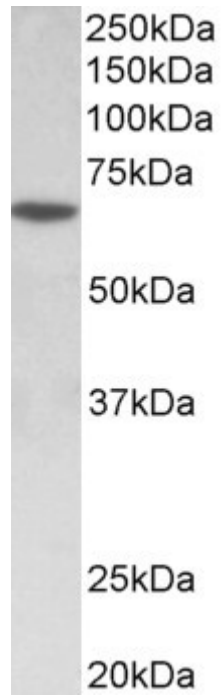
This antibody has been successfully used in IHC on Mouse:

Chen C, Jin J, Lee GA, Silva E, Donoghue M.

Cross-species functional analyses reveal shared and separate roles for Sox11 in frog primary neurogenesis and mouse cortical neuronal differentiation.

Biol Open. 2016 Apr 15;5(4):409-17

PMID: 26962049



EB11231 (0.5 μ g/ml) staining of MOLT4 lysate (35 μ g protein in RIPA buffer). Detected by chemiluminescence.