



SZABO SCANDIC

Part of Europa Biosite

Produktinformation



Forschungsprodukte & Biochemikalien



Zellkultur & Verbrauchsmaterial



Diagnostik & molekulare Diagnostik



Laborgeräte & Service

Weitere Information auf den folgenden Seiten!
See the following pages for more information!



Lieferung & Zahlungsart

siehe unsere [Liefer- und Versandbedingungen](#)

Zuschläge

- Mindermengenzuschlag
- Trockeneiszuschlag
- Gefahrgutzuschlag
- Expressversand

SZABO-SCANDIC HandelsgmbH

Quellenstraße 110, A-1100 Wien

T. +43(0)1 489 3961-0

F. +43(0)1 489 3961-7

mail@szabo-scandic.com

www.szabo-scandic.com

[linkedin.com/company/szaboscandic](https://www.linkedin.com/company/szaboscandic) 



UK Office

Everest Biotech Ltd

Cherwell Innovation Centre
77 Heyford Park
Upper Heyford
Oxfordshire
OX25 5HD
UK

Enquiries:

info@everestbiotech.com

Sales:

sales@everestbiotech.com

Tech support:

support@everestbiotech.com

Tel: +44 (0)1869 238326

Fax: +44 (0)1869 238327

US Office

Everest Biotech c/o Abcore

405 Maple Street, Suite A106
Ramona,
CA 92065
USA

Inquiries:

info@everestbiotech.com

Sales:

usasales@everestbiotech.com

Tech support:

support@everestbiotech.com

Tel: 888-320-4628 (toll-free)

Fax: 888-841-9041

www.everestbiotech.com

**Research Use Only. Not for
diagnostic or therapeutic use.**

EB11301 - Goat Anti-KLF13 (aa45-58) Antibody

Size: 100µg specific antibody in 200µl



Target Protein

Principal Names: basic transcription element binding protein 3, basic transcription element-binding protein 3, BTEB3, BTE-binding protein 3, FKLF2, Krueppel-like factor 13, Kruppel-like factor 13, novel Sp1-like zinc finger transcription factor 1, NSLP1, RANTES factor of late activated T lymphocytes-1, RANTES factor of late activated T-lymphocytes 1, RFLAT1, RFLAT-1, Sp1 like zinc finger transcription factor, transcription factor BTEB3, transcription factor NSLP1, KLF13

Official Symbol: KLF13

Accession Number(s): NP_057079.2

Human GeneID(s): [51621](#)

Non-Human GeneID(s): 50793 (mouse)

Immunogen

Peptide with sequence C-TLPRVEERRDGKDS, from the internal region of the protein sequence according to NP_057079.2.

Please note the [peptide](#) is available for sale.

Purification and Storage

Purified from goat serum by ammonium sulphate precipitation followed by antigen affinity chromatography using the immunizing peptide.

Supplied at 0.5 mg/ml in Tris saline, 0.02% sodium azide, pH7.3 with 0.5% bovine serum albumin.

Aliquot and store at -20°C. Minimize freezing and thawing.

Applications Tested

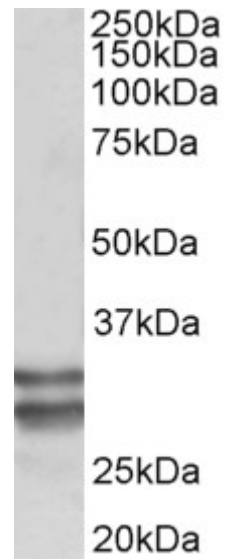
Peptide ELISA: antibody detection limit dilution 1:64000.

Western blot: Approx 30+28kDa bands observed in Human Heart lysates (calculated MW of 31.2kDa according to NP_057079.2). Recommended concentration: 0.1-0.3µg/ml. The 28kDa is explained by partly proteolysis. Both bands were blocked by the immunizing peptide.

Species Reactivity

Tested: Human

Expected from sequence similarity: Human, Mouse, Pig, Cow



EB11301 (0.1µg/ml) staining of Human Heart lysate (35µg protein in RIPA buffer). Primary incubation was 1 hour. Detected by chemiluminescence.