



# SZABO SCANDIC

Part of Europa Biosite

## Produktinformation



Forschungsprodukte & Biochemikalien



Zellkultur & Verbrauchsmaterial



Diagnostik & molekulare Diagnostik



Laborgeräte & Service

Weitere Information auf den folgenden Seiten!  
See the following pages for more information!



### Lieferung & Zahlungsart

siehe unsere [Liefer- und Versandbedingungen](#)

### Zuschläge

- Mindermengenzuschlag
- Trockeneiszuschlag
- Gefahrgutzuschlag
- Expressversand

### SZABO-SCANDIC HandelsgmbH

Quellenstraße 110, A-1100 Wien

T. +43(0)1 489 3961-0

F. +43(0)1 489 3961-7

[mail@szabo-scandic.com](mailto:mail@szabo-scandic.com)

[www.szabo-scandic.com](http://www.szabo-scandic.com)

[linkedin.com/company/szaboscandic](https://www.linkedin.com/company/szaboscandic) 



## UK Office

### Everest Biotech Ltd

Cherwell Innovation Centre  
77 Heyford Park  
Upper Heyford  
Oxfordshire  
OX25 5HD  
UK

Enquiries:

[info@everestbiotech.com](mailto:info@everestbiotech.com)

Sales:

[sales@everestbiotech.com](mailto:sales@everestbiotech.com)

Tech support:

[support@everestbiotech.com](mailto:support@everestbiotech.com)

Tel: +44 (0)1869 238326

Fax: +44 (0)1869 238327

## US Office

### Everest Biotech c/o Abcore

405 Maple Street, Suite A106  
Ramona,  
CA 92065  
USA

Inquiries:

[info@everestbiotech.com](mailto:info@everestbiotech.com)

Sales:

[usasales@everestbiotech.com](mailto:usasales@everestbiotech.com)

Tech support:

[support@everestbiotech.com](mailto:support@everestbiotech.com)

Tel: 888-320-4628 (toll-free)

Fax: 888-841-9041

[www.everestbiotech.com](http://www.everestbiotech.com)

**Research Use Only. Not for  
diagnostic or therapeutic use.**

## EB11350 - Goat Anti-HMHA1 (aa57-71) Antibody

Size: 100µg specific antibody in 200µl



### Target Protein

**Principal Names:** HA-1, histocompatibility (minor) HA-1, HLA-HA1, KIAA0223, minor histocompatibility antigen HA-1, minor histocompatibility protein HA-1, HMHA1

**Official Symbol:** ARHGAP45

**Accession Number(s):** NP\_036424.2

**Human GeneID(s):** [23526](#)

**Non-Human GeneID(s):** 70719 (mouse), 314618 (rat)

**Important Comments:** To avoid confusion please note that this antibody is designed to recognise the whole protein as coded by NP\_036424.2 and won't recognise the peptide found eluted from HLA-A\*0201 molecules by den Haan et al (Science. 1998 Feb 13;279(5353):1054-7, PMID: 9461441)

### Immunogen

Peptide with sequence KATGTLKRPTSLSRH-C, from the N Terminus of the protein sequence according to NP\_036424.2.

Please note the [peptide](#) is available for sale.

### Purification and Storage

Purified from goat serum by ammonium sulphate precipitation followed by antigen affinity chromatography using the immunizing peptide.

Supplied at 0.5 mg/ml in Tris saline, 0.02% sodium azide, pH7.3 with 0.5% bovine serum albumin.

Aliquot and store at -20°C. Minimize freezing and thawing.

### Applications Tested

**Peptide ELISA:** antibody detection limit dilution 1:128000.

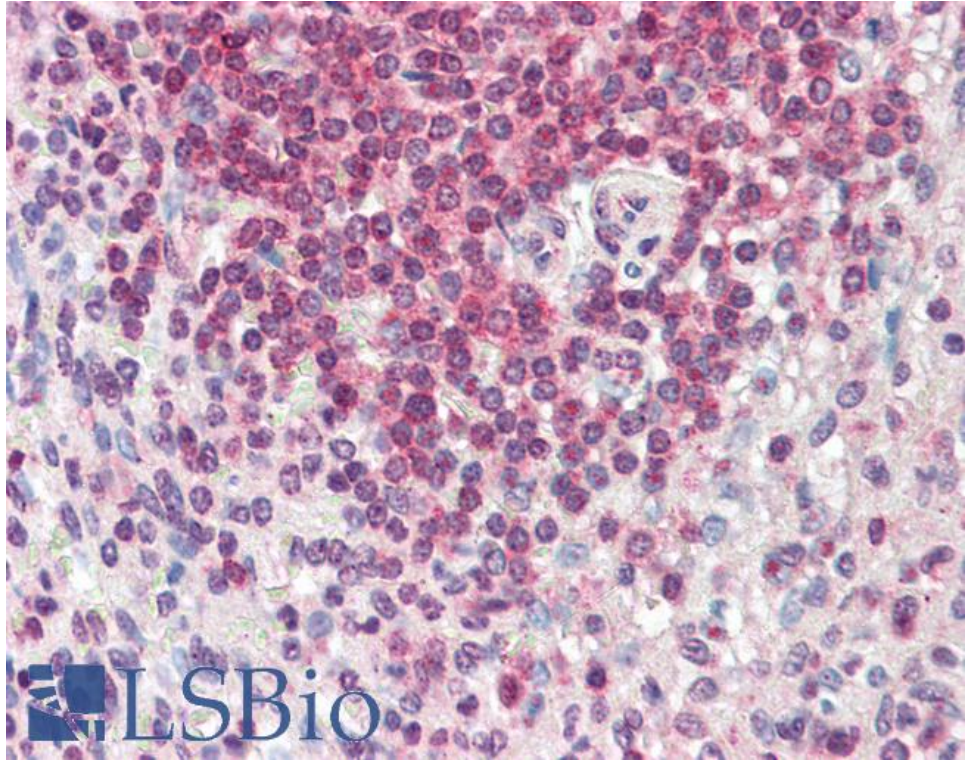
**Western blot:** Preliminary experiments gave an approx 200kDa band in lysates of cell lines Jurkat and Molt4 after 0.05µg/ml antibody staining. Please note that currently we cannot find an explanation in the literature for the band we observe given the calculated size of 125kDa according to NP\_036424.2. The 200kDa band was successfully blocked by incubation with the immunizing peptide.

**IHC:** Paraffin embedded Human Spleen. Recommended concentration: 5µg/ml.

### Species Reactivity

**Tested:** Human

**Expected from sequence similarity:** Human, Mouse, Rat, Cow



EB11350 (5µg/ml) staining of paraffin embedded Human Spleen. Steamed antigen retrieval with citrate buffer pH 6, AP-staining.