



SZABO SCANDIC

Part of Europa Biosite

Produktinformation



Forschungsprodukte & Biochemikalien



Zellkultur & Verbrauchsmaterial



Diagnostik & molekulare Diagnostik



Laborgeräte & Service

Weitere Information auf den folgenden Seiten!
See the following pages for more information!



Lieferung & Zahlungsart

siehe unsere [Liefer- und Versandbedingungen](#)

Zuschläge

- Mindermengenzuschlag
- Trockeneiszuschlag
- Gefahrgutzuschlag
- Expressversand

SZABO-SCANDIC HandelsgmbH

Quellenstraße 110, A-1100 Wien

T. +43(0)1 489 3961-0

F. +43(0)1 489 3961-7

mail@szabo-scandic.com

www.szabo-scandic.com

[linkedin.com/company/szaboscandic](https://www.linkedin.com/company/szaboscandic) 



EB11380 - Goat Anti-SFTPA1 / SFTPA2 (aa102-115) Antibody

Size: 100µg specific antibody in 200µl



UK Office

Everest Biotech Ltd

Cherwell Innovation Centre
77 Heyford Park
Upper Heyford
Oxfordshire
OX25 5HD
UK

Enquiries:

info@everestbiotech.com

Sales:

sales@everestbiotech.com

Tech support:

support@everestbiotech.com

Tel: +44 (0)1869 238326

Fax: +44 (0)1869 238327

US Office

Everest Biotech c/o Abcore

405 Maple Street, Suite A106
Ramona,
CA 92065
USA

Inquiries:

info@everestbiotech.com

Sales:

usasales@everestbiotech.com

Tech support:

support@everestbiotech.com

Tel: 888-320-4628 (toll-free)

Fax: 888-841-9041

www.everestbiotech.com

Research Use Only. Not for diagnostic or therapeutic use.

Target Protein

Principal Names: 35 kDa pulmonary surfactant-associated protein, alveolar proteinosis protein, COLEC4, collectin-4, FLJ50593, FLJ51913, FLJ61144, FLJ77898, FLJ79095, FLJ99559, MGC133365, MGC198590, OTTHUMP00000019928, OTTHUMP00000019929, OTTHUMP00000019930, OTTHUMP00000019931, PSAP, PSPA, PSP-A, pulmonary surfactant-associated protein A1, SFTP1, SFTPA1B, SPA, SP-A, SPA1, SP-A1, surfactant protein A1, surfactant protein A1 variant AB'D' 6A2, surfactant protein A1 variant AB'D' 6A3, surfactant protein A1 variant AB'D' 6A4, surfactant protein A1 variant ACD' 6A2, surfactant protein A1 variant ACD' 6A3, surfactant protein A1 variant ACD' 6A4, surfactant protein A1 variant AD' 6A, surfactant protein A1 variant AD' 6A2, surfactant protein A1 variant AD' 6A3, surfactant protein A1 variant AD' 6A4, surfactant protein A1B, surfactant, pulmonary-associated protein A1A, surfactant, pulmonary-associated protein A1B, SFTPA1

Official Symbol: SFTPA1

Accession Number(s): NP_005402.3; NP_001087239.2; NP_001158117.1; NP_001158118.1; NP_001092138.1

Human GeneID(s): [653509](#) , [729238](#)

Important Comments: This antibody is expected to recognize all the reported isoforms of A1 (NP_005402.3; NP_001087239.2; NP_001158117.1; NP_001158118.1) and A2 (NP_001092138.1), Reported variants represent identical protein: NP_001158116.1, NP_005402.3, NP_001158119.1

Immunogen

Peptide with sequence C-HLDEELQATLHDFR, from the internal region of the protein sequence according to NP_005402.3; NP_001087239.2; NP_001158117.1; NP_001158118.1; NP_001092138.1.

Please note the [peptide](#) is available for sale.

Purification and Storage

Purified from goat serum by ammonium sulphate precipitation followed by antigen affinity chromatography using the immunizing peptide.

Supplied at 0.5 mg/ml in Tris saline, 0.02% sodium azide, pH7.3 with 0.5% bovine serum albumin.

Aliquot and store at -20°C. Minimize freezing and thawing.

Applications Tested

Peptide ELISA: antibody detection limit dilution 1:32000.

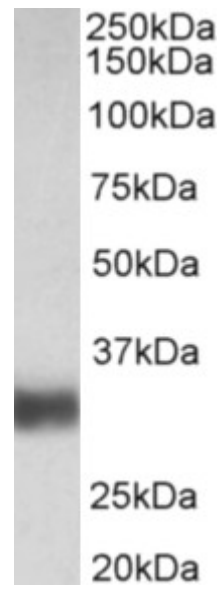
Western blot: Approx 30kDa band observed in Human Lung lysates (calculated MW of 27.7kDa according to NP_001087239.2). Recommended concentration: 0.01-0.03µg/ml.

IHC: Paraffin embedded Human Lung. Recommended concentration: 5µg/ml.

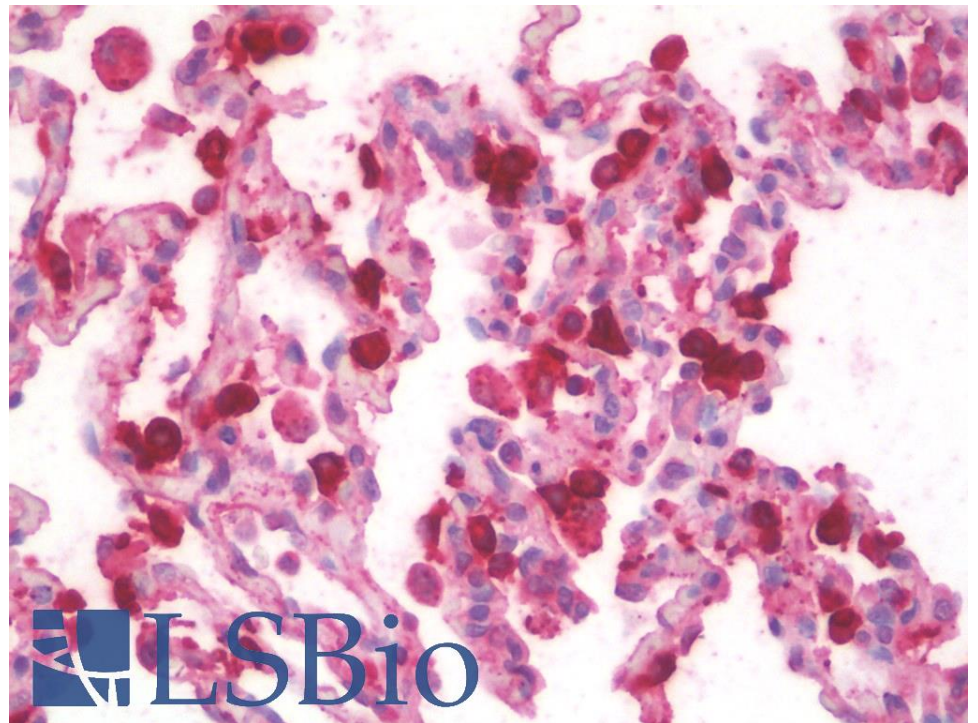
Species Reactivity

Tested: Human

Expected from sequence similarity: Human, Cow



EB11380 (0.01 μ g/ml) staining of Human Lung lysate (35 μ g protein in RIPA buffer). Primary incubation was 1 hour. Detected by chemiluminescence.



EB11380 (5 μ g/ml) staining of paraffin embedded Human Lung. Steamed antigen retrieval with citrate buffer pH 6, AP-staining.