



SZABO SCANDIC

Part of Europa Biosite

Produktinformation



Forschungsprodukte & Biochemikalien



Zellkultur & Verbrauchsmaterial



Diagnostik & molekulare Diagnostik



Laborgeräte & Service

Weitere Information auf den folgenden Seiten!
See the following pages for more information!



Lieferung & Zahlungsart

siehe unsere [Liefer- und Versandbedingungen](#)

Zuschläge

- Mindermengenzuschlag
- Trockeneiszuschlag
- Gefahrgutzuschlag
- Expressversand

SZABO-SCANDIC HandelsgmbH

Quellenstraße 110, A-1100 Wien

T. +43(0)1 489 3961-0

F. +43(0)1 489 3961-7

mail@szabo-scandic.com

www.szabo-scandic.com

[linkedin.com/company/szaboscandic](https://www.linkedin.com/company/szaboscandic) 



UK Office

Everest Biotech Ltd

Cherwell Innovation Centre
77 Heyford Park
Upper Heyford
Oxfordshire
OX25 5HD
UK

Enquiries:

info@everestbiotech.com

Sales:

sales@everestbiotech.com

Tech support:

support@everestbiotech.com

Tel: +44 (0)1869 238326

Fax: +44 (0)1869 238327

US Office

Everest Biotech c/o Abcore

405 Maple Street, Suite A106
Ramona,
CA 92065
USA

Inquiries:

info@everestbiotech.com

Sales:

usasales@everestbiotech.com

Tech support:

support@everestbiotech.com

Tel: 888-320-4628 (toll-free)

Fax: 888-841-9041

www.everestbiotech.com

**Research Use Only. Not for
diagnostic or therapeutic use.**

EB11418 - Goat Anti-RRAD (aa36-48) Antibody

Size: 100µg specific antibody in 200µl



Target Protein

Principal Names: GTP-binding protein RAD, OTTHUMP00000174805, RAD, RAD1, RAS (RAD and GEM) like GTP binding 3, ras associated with diabetes, Ras-related associated with diabetes, REM3, RRAD

Official Symbol: RRAD

Accession Number(s): NP_004156.1

Human GeneID(s): [6236](#)

Non-Human GeneID(s): 56437 (mouse), 83521 (rat)

Important Comments: Reported variants represent identical protein: NP_004156.1, NP_001122322.1

Immunogen

Peptide with sequence C-HRRSMPVDERDLQ, from the internal region of the protein sequence according to NP_004156.1.

Please note the [peptide](#) is available for sale.

Purification and Storage

Purified from goat serum by ammonium sulphate precipitation followed by antigen affinity chromatography using the immunizing peptide.

Supplied at 0.5 mg/ml in Tris saline, 0.02% sodium azide, pH7.3 with 0.5% bovine serum albumin.

Aliquot and store at -20°C. Minimize freezing and thawing.

Applications Tested

Peptide ELISA: antibody detection limit dilution 1:64000.

Western blot: Approx 37kDa band observed in Mouse Heart lysates and no 37kDa in the KO lysates (calculated MW of 33.2kDa according to mouse NP_062636.2 and human NP_004156.1). There is some non-specific background, we call for caution when used for other assays than Western blot. In transfected HEK293 transiently expressing Mouse Rrad (HA tagged), a band of approx. 45kDa is observed. No bands are observed in transfected HEK293 transiently expressing related Mouse GTPases. Recommended concentration: 0.5-2µg/ml.

Species Reactivity

Tested: Mouse

Expected from sequence similarity: Human, Mouse, Rat, Dog, Pig, Cow

Specific Reference

This antibody has been successfully used in Western blot on Mouse:

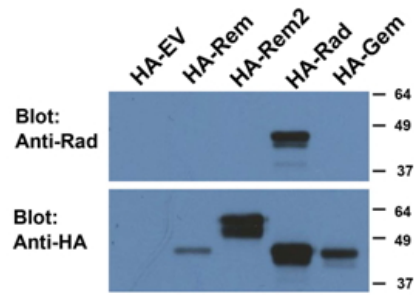
Catherine N. Withers, Drew M. Brown, Innocent Byiringiro, Matthew R. Allen, Keith W. Condon, Jonathan Satin, Douglas A. Andres

Rad GTPase is essential for the regulation of bone density and bone marrow adipose tissue in mice

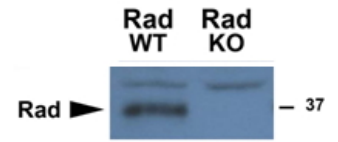
Bone. 2017 Oct; 103: 270-280.

PMID: 28732776

A)



B)



A): EB11418 (0.5 μ g/ml) staining of HEK293 lysates overexpressing several HA-tagged Mouse GTPases, including Rrad (10 μ g protein in RIPA buffer) and compared with an HA-specific antibody. B): EB11418 (0.5 μ g/ml) staining of WT and KO lysates of Mouse Heart (100 μ g protein in RIPA buffer). Primary incubation was 1 hour. Detected by chemiluminescence. Data provided by Prof. D Andres, University of Kentucky College of Medicine, USA.