



# SZABO SCANDIC

Part of Europa Biosite

## Produktinformation



Forschungsprodukte & Biochemikalien



Zellkultur & Verbrauchsmaterial



Diagnostik & molekulare Diagnostik



Laborgeräte & Service

Weitere Information auf den folgenden Seiten!  
See the following pages for more information!



### Lieferung & Zahlungsart

siehe unsere [Liefer- und Versandbedingungen](#)

### Zuschläge

- Mindermengenzuschlag
- Trockeneiszuschlag
- Gefahrgutzuschlag
- Expressversand

### SZABO-SCANDIC HandelsgmbH

Quellenstraße 110, A-1100 Wien

T. +43(0)1 489 3961-0

F. +43(0)1 489 3961-7

[mail@szabo-scandic.com](mailto:mail@szabo-scandic.com)

[www.szabo-scandic.com](http://www.szabo-scandic.com)

[linkedin.com/company/szaboscandic](https://www.linkedin.com/company/szaboscandic) 

## UK Office

### Everest Biotech Ltd

Cherwell Innovation Centre  
77 Heyford Park  
Upper Heyford  
Oxfordshire  
OX25 5HD  
UK

Enquiries:

[info@everestbiotech.com](mailto:info@everestbiotech.com)

Sales:

[sales@everestbiotech.com](mailto:sales@everestbiotech.com)

Tech support:

[support@everestbiotech.com](mailto:support@everestbiotech.com)

Tel: +44 (0)1869 238326

Fax: +44 (0)1869 238327

## US Office

### Everest Biotech c/o Abcore

405 Maple Street, Suite A106  
Ramona,  
CA 92065  
USA

Inquiries:

[info@everestbiotech.com](mailto:info@everestbiotech.com)

Sales:

[usasales@everestbiotech.com](mailto:usasales@everestbiotech.com)

Tech support:

[support@everestbiotech.com](mailto:support@everestbiotech.com)

Tel: 888-320-4628 (toll-free)

Fax: 888-841-9041

[www.everestbiotech.com](http://www.everestbiotech.com)

**Research Use Only. Not for  
diagnostic or therapeutic use.**

## EB11450 - Goat Anti-SERCA2 / ATP2A2 Antibody

Size: 100µg specific antibody in 200µl



### Target Protein

**Principal Names:** ATP2B, ATPase, Ca<sup>++</sup> dependent, slow-twitch, cardiac muscle-2, ATPase, Ca<sup>++</sup> transporting, cardiac muscle, slow twitch 2, calcium pump 2, calcium-transporting ATPase sarcoplasmic reticulum type, slow twitch skeletal muscle isoform, cardiac Ca<sup>2+</sup> ATPase, DAR, DD, DKFZp686P0211, endoplasmic reticulum class 1/2 Ca(2+) ATPase, FLJ20293, FLJ38063, MGC45367, sarcoplasmic/endoplasmic reticulum calcium ATPase 2, SERCA2, SR Ca(2+)-ATPase 2, ATP2A2

**Official Symbol:** ATP2A2

**Accession Number(s):** NP\_001672.1; NP\_733765.1

**Human GeneID(s):** [488](#)

**Non-Human GeneID(s):** 11938 (mouse), 29693 (rat)

**Important Comments:** This antibody is expected to recognize both reported isoforms (NP\_001672.1; NP\_733765.1).

### Immunogen

Peptide with sequence DELNPSAQRDACLN, from the internal region of the protein sequence according to NP\_001672.1; NP\_733765.1.

Please note the [peptide](#) is available for sale.

### Purification and Storage

Purified from goat serum by ammonium sulphate precipitation followed by antigen affinity chromatography using the immunizing peptide.

Supplied at 0.5 mg/ml in Tris saline, 0.02% sodium azide, pH7.3 with 0.5% bovine serum albumin.

Aliquot and store at -20°C. Minimize freezing and thawing.

### Applications Tested

**Peptide ELISA:** antibody detection limit dilution 1:128000.

**Western blot:** Approx 110kDa band observed in Human, Mouse and Rat Heart lysates (calculated MW of 110kDa according to NP\_001672.1). Recommended concentration: 0.1-0.3µg/ml. Primary incubation was 1 hour.

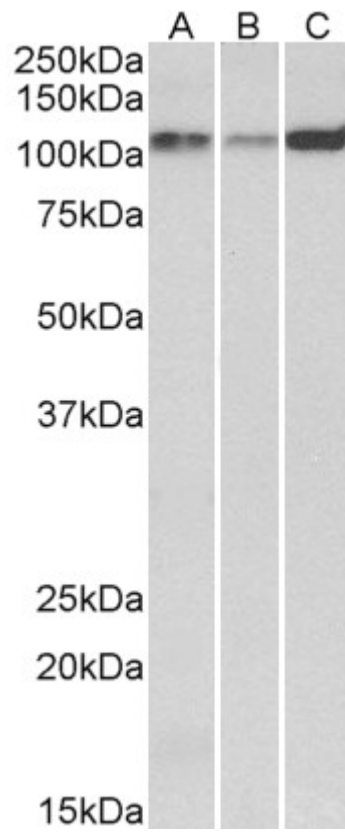
**IHC:** Paraffin embedded Human Heart. Recommended concentration: 5µg/ml.

**Immunofluorescence:** Strong expression of the protein seen in the endoplasmic reticulum of HeLa cells. Recommended concentration: 10µg/ml.

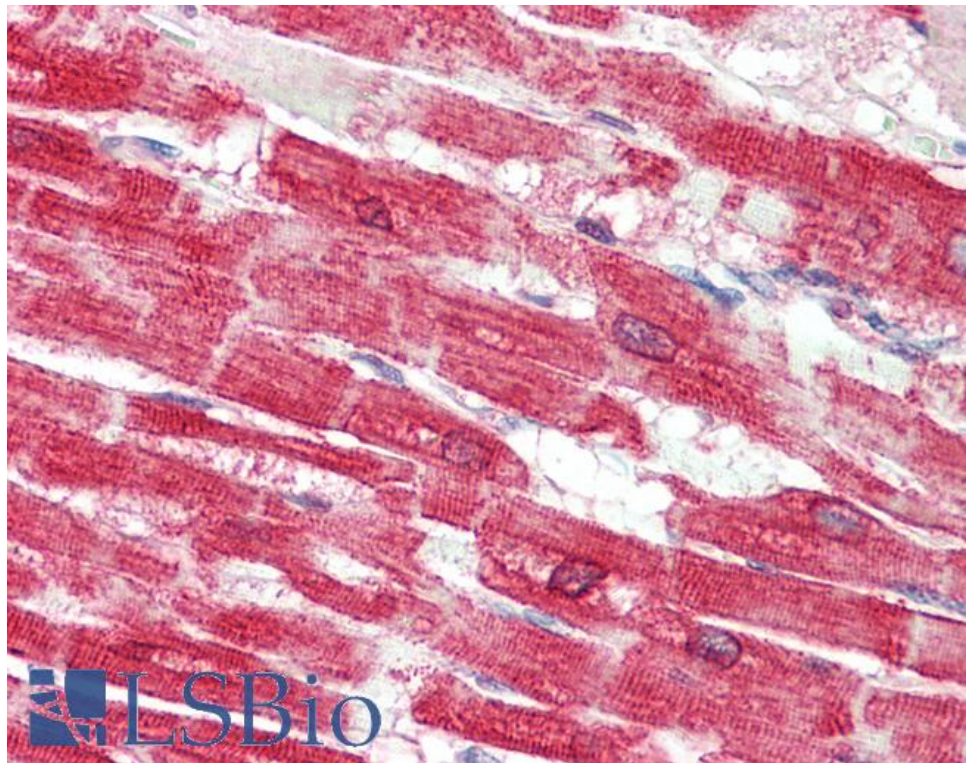
### Species Reactivity

**Tested:** Human, Mouse, Rat

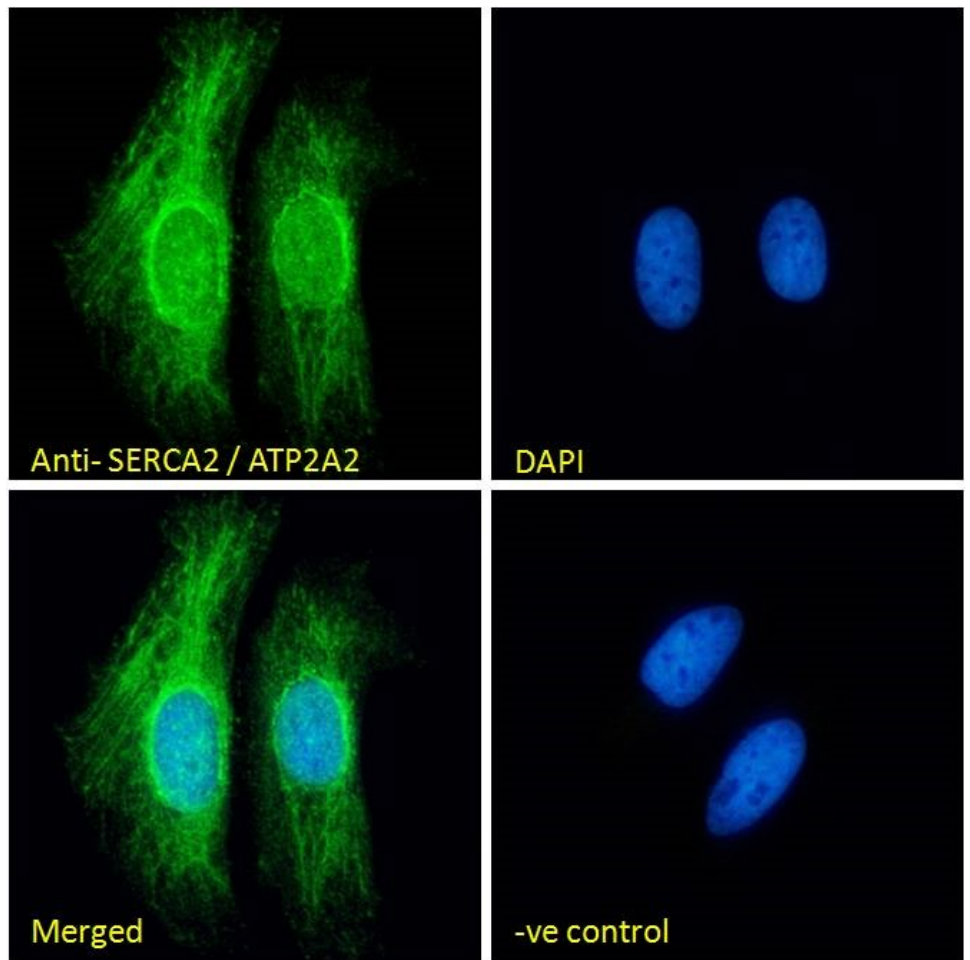
**Expected from sequence similarity:** Human, Mouse, Rat, Dog, Pig



EB11450 (0.1µg/ml) staining of Human (A), Mouse (B) and Rat (C) Heart lysates (35µg protein in RIPA buffer). Detected by chemiluminescence.



EB11450 (5µg/ml) staining of paraffin embedded Human Heart. Steamed antigen retrieval with citrate buffer pH 6, AP-staining.



EB11450 immunofluorescence analysis of paraformaldehyde fixed HeLa cells, permeabilized with 0.15% Triton. Primary incubation 1hr (10ug/ml) followed by Alexa Fluor 488 secondary antibody (2ug/ml), showing endoplasmic reticulum staining. The nuclear stain is DAPI (blue). Negative control: Unimmunized goat IgG (10ug/ml) followed by Alexa Fluor 488 secondary antibody (2ug/ml).