



SZABO SCANDIC

Part of Europa Biosite

Produktinformation



Forschungsprodukte & Biochemikalien



Zellkultur & Verbrauchsmaterial



Diagnostik & molekulare Diagnostik



Laborgeräte & Service

Weitere Information auf den folgenden Seiten!
See the following pages for more information!



Lieferung & Zahlungsart

siehe unsere [Liefer- und Versandbedingungen](#)

Zuschläge

- Mindermengenzuschlag
- Trockeneiszuschlag
- Gefahrgutzuschlag
- Expressversand

SZABO-SCANDIC HandelsgmbH

Quellenstraße 110, A-1100 Wien

T. +43(0)1 489 3961-0

F. +43(0)1 489 3961-7

mail@szabo-scandic.com

www.szabo-scandic.com

[linkedin.com/company/szaboscandic](https://www.linkedin.com/company/szaboscandic) 



UK Office

Everest Biotech Ltd

Cherwell Innovation Centre
77 Heyford Park
Upper Heyford
Oxfordshire
OX25 5HD
UK

Enquiries:

info@everestbiotech.com

Sales:

sales@everestbiotech.com

Tech support:

support@everestbiotech.com

Tel: +44 (0)1869 238326

Fax: +44 (0)1869 238327

US Office

Everest Biotech c/o Abcore

405 Maple Street, Suite A106
Ramona,
CA 92065
USA

Inquiries:

info@everestbiotech.com

Sales:

usasales@everestbiotech.com

Tech support:

support@everestbiotech.com

Tel: 888-320-4628 (toll-free)

Fax: 888-841-9041

www.everestbiotech.com

**Research Use Only. Not for
diagnostic or therapeutic use.**

EB11483 - Goat Anti-DYRK1A Antibody

Size: 100µg specific antibody in 200µl



Target Protein

Principal Names: dual specificity tyrosine-phosphorylation-regulated kinase 1A, dual specificity YAK1-related kinase, dual-specificity tyrosine-(Y)-phosphorylation regulated kinase 1A, DYRK, DYRK1, DYRK1A, hMNB, HP86, MNB, mnb protein kinase homolog hp86, MNB/DYRK protein kinase, MNBH, MRD7, OTTHUMP00000109090, OTTHUMP00000109091, OTTHUMP00000109094, OTTHUMP00000174799, protein kinase minibrain homolog, serine/threonine kinase MNB, serine/threonine-specific protein kinase

Official Symbol: DYRK1A

Accession Number(s): NP_001387.2; NP_569120.1; NP_567824.1; NP_569122.1

Human GeneID(s): [1859](#)

Non-Human GeneID(s): 13548 (mouse), 25255 (rat)

Important Comments: This antibody is expected to recognize all reported isoforms (NP_001387.2; NP_569120.1; NP_567824.1; NP_569122.1). This antibody is not expected to cross-react with DYRK1B.

Immunogen

Peptide with sequence PHSHQYSDRRQPN-C, from the N Terminus of the protein sequence according to NP_001387.2; NP_569120.1; NP_567824.1; NP_569122.1.

Please note the [peptide](#) is available for sale.

Purification and Storage

Purified from goat serum by ammonium sulphate precipitation followed by antigen affinity chromatography using the immunizing peptide.

Supplied at 0.5 mg/ml in Tris saline, 0.02% sodium azide, pH7.3 with 0.5% bovine serum albumin.

Aliquot and store at -20°C. Minimize freezing and thawing.

Applications Tested

Peptide ELISA: antibody detection limit dilution 1:64000.

Western blot: Approx 80kDa band observed in lysates of cell line K562 (calculated MW of 85.6kDa according to NP_001387.2). Recommended concentration: 0.5-2µg/ml. Primary incubation was 1 hour.

Immunoprecipitation: This product has been successfully used in IP on Human: Widowati et al, BMC Res Notes. 2018 May 15;11(1):297. PMID: 29764512.

Species Reactivity

Tested: Human

Expected from sequence similarity: Human, Mouse, Rat, Dog, Pig, Cow

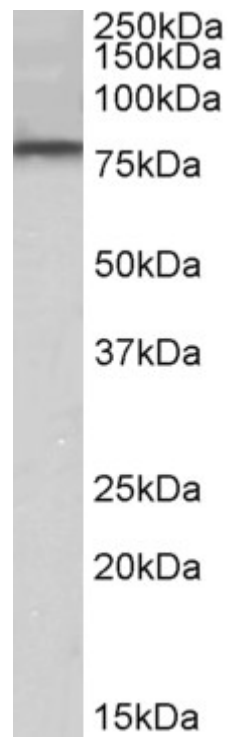
Specific Reference

This antibody has been successfully used in IP on Human:

Esti Wahyu Widowati, Simone Bamberg-Lemper and Walter Becky
Mutational analysis of two residues in the DYRK homology box of the protein kinase DYRK1A

BMC Res Notes. 2018 May 15;11(1):297.

PMID: 29764512



EB11483 (0.5 μ g/ml) staining of K562 lysate (35 μ g protein in RIPA buffer). Detected by chemiluminescence.