



SZABO SCANDIC

Part of Europa Biosite

Produktinformation



Forschungsprodukte & Biochemikalien



Zellkultur & Verbrauchsmaterial



Diagnostik & molekulare Diagnostik



Laborgeräte & Service

Weitere Information auf den folgenden Seiten!
See the following pages for more information!



Lieferung & Zahlungsart

siehe unsere [Liefer- und Versandbedingungen](#)

Zuschläge

- Mindermengenzuschlag
- Trockeneiszuschlag
- Gefahrgutzuschlag
- Expressversand

SZABO-SCANDIC HandelsgmbH

Quellenstraße 110, A-1100 Wien

T. +43(0)1 489 3961-0

F. +43(0)1 489 3961-7

mail@szabo-scandic.com

www.szabo-scandic.com

[linkedin.com/company/szaboscandic](https://www.linkedin.com/company/szaboscandic) 



UK Office

Everest Biotech Ltd

Cherwell Innovation Centre
77 Heyford Park
Upper Heyford
Oxfordshire
OX25 5HD
UK

Enquiries:

info@everestbiotech.com

Sales:

sales@everestbiotech.com

Tech support:

support@everestbiotech.com

Tel: +44 (0)1869 238326

Fax: +44 (0)1869 238327

US Office

Everest Biotech c/o Abcore

405 Maple Street, Suite A106
Ramona,
CA 92065
USA

Inquiries:

info@everestbiotech.com

Sales:

usasales@everestbiotech.com

Tech support:

support@everestbiotech.com

Tel: 888-320-4628 (toll-free)

Fax: 888-841-9041

www.everestbiotech.com

**Research Use Only. Not for
diagnostic or therapeutic use.**

EB11488 - Goat Anti-GEM (aa34-46) Antibody

Size: 100µg specific antibody in 200µl



Target Protein

Principal Names: GEM, GTP binding protein overexpressed in skeletal muscle, GTP-binding mitogen-induced T-cell protein, GTP-binding protein GEM, GTP-binding protein overexpressed in skeletal muscle, kinase-inducible Ras-like protein, KIR, MGC26294, OTTHUMP00000226600, OTTHUMP00000226601, RAS-like protein KIR

Official Symbol: GEM

Accession Number(s): NP_005252.1

Human GeneID(s): [2669](#)

Important Comments: Reported variants represent identical protein: NP_005252.1, NP_859053.1

Immunogen

Peptide with sequence C-QKEPHQYSHRNRH, from the internal region of the protein sequence according to NP_005252.1.

Please note the [peptide](#) is available for sale.

Purification and Storage

Purified from goat serum by ammonium sulphate precipitation followed by antigen affinity chromatography using the immunizing peptide.

Supplied at 0.5 mg/ml in Tris saline, 0.02% sodium azide, pH7.3 with 0.5% bovine serum albumin.

Aliquot and store at -20°C. Minimize freezing and thawing.

Applications Tested

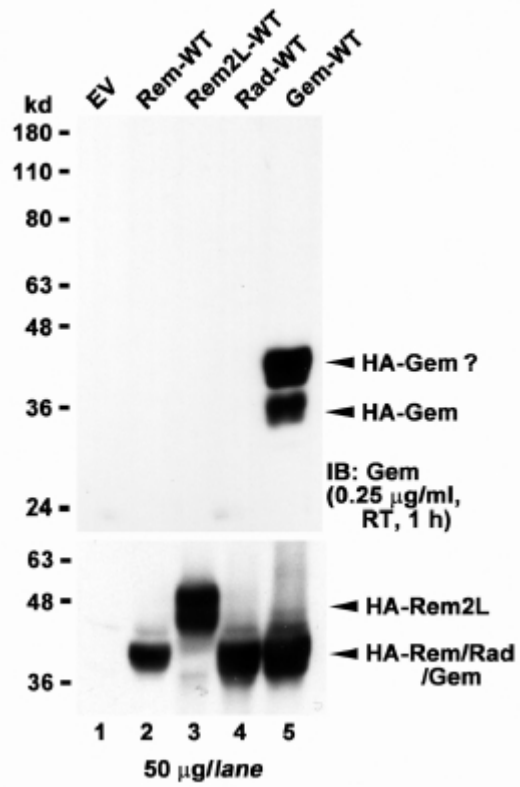
Peptide ELISA: antibody detection limit dilution 1:16000.

Western blot: In transfected HEK293 transiently expressing Human recombinant GEM bands of approx. 35+45kDa are observed. These bands are not observed in the transfected HEK293 with empty vector and the antibody does not cross-react to related protein such as Rem, Rem2L or Rad. Data provided by Prof. R Andres, Univ. Kentucky, USA. A similar banding pattern we observed in Human Spleen. The calculated molecular size is 33.9kDa according to NP_005252.1. Recommended concentration: 1-3µg/ml.

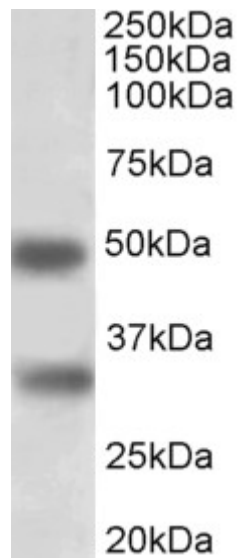
Species Reactivity

Tested: Human

Expected from sequence similarity: Human



HEK293 lysate overexpressing full-length Human GEM (HA tagged), mock-transfected HEK293 (EV) and HEK293 transiently expressing GEM-related genes (Rem, Rem2L and Rad) probed with EB11488 (1µg/ml). The same lysates probed with anti-HA tag antibody in the lower panel.



EB11488 (1µg/ml) staining of Human Spleen lysate (35µg protein in RIPA buffer). Primary incubation was 1 hour. Detected by chemiluminescence.