



SZABO SCANDIC

Part of Europa Biosite

Produktinformation



Forschungsprodukte & Biochemikalien



Zellkultur & Verbrauchsmaterial



Diagnostik & molekulare Diagnostik



Laborgeräte & Service

Weitere Information auf den folgenden Seiten!
See the following pages for more information!



Lieferung & Zahlungsart

siehe unsere [Liefer- und Versandbedingungen](#)

Zuschläge

- Mindermengenzuschlag
- Trockeneiszuschlag
- Gefahrgutzuschlag
- Expressversand

SZABO-SCANDIC HandelsgmbH

Quellenstraße 110, A-1100 Wien

T. +43(0)1 489 3961-0

F. +43(0)1 489 3961-7

mail@szabo-scandic.com

www.szabo-scandic.com

[linkedin.com/company/szaboscandic](https://www.linkedin.com/company/szaboscandic) 



UK Office

Everest Biotech Ltd

Cherwell Innovation Centre
77 Heyford Park
Upper Heyford
Oxfordshire
OX25 5HD
UK

Enquiries:

info@everestbiotech.com

Sales:

sales@everestbiotech.com

Tech support:

support@everestbiotech.com

Tel: +44 (0)1869 238326

Fax: +44 (0)1869 238327

US Office

Everest Biotech c/o Abcore

405 Maple Street, Suite A106
Ramona,
CA 92065
USA

Inquiries:

info@everestbiotech.com

Sales:

usasales@everestbiotech.com

Tech support:

support@everestbiotech.com

Tel: 888-320-4628 (toll-free)

Fax: 888-841-9041

www.everestbiotech.com

**Research Use Only. Not for
diagnostic or therapeutic use.**

EB11536 - Goat Anti-MEX3C (aa541-554) Antibody

Size: 100µg specific antibody in 200µl



Target Protein

Principal Names: FLJ38871, mex-3 homolog C (C. elegans), MEX3C, MEX-3C, OTTHUMP00000163545, ring finger and KH domain containing 2, RING finger and KH domain-containing protein 2, RING finger protein 194, RKHD2, RNA-binding protein MEX3C, RNF194

Official Symbol: MEX3C

Accession Number(s): NP_057710.3

Human GeneID(s): [51320](#)

Non-Human GeneID(s): 240396 (mouse), 307271 (rat)

Immunogen

Peptide with sequence C-TPRLSPTFPESIEH, from the internal region of the protein sequence according to NP_057710.3.

Please note the [peptide](#) is available for sale.

Purification and Storage

Purified from goat serum by ammonium sulphate precipitation followed by antigen affinity chromatography using the immunizing peptide.

Supplied at 0.5 mg/ml in Tris saline, 0.02% sodium azide, pH7.3 with 0.5% bovine serum albumin.

Aliquot and store at -20°C. Minimize freezing and thawing.

Applications Tested

Peptide ELISA: antibody detection limit dilution 1:32000.

Western blot: Approx 60+36kDa bands observed in Mouse Testis lysates, and these bands reduced after knock-down by gene trap (calculated MW of 69.4kDa according to NP_057710.3). Recommended concentration: 0.2-0.5µg/ml. Primary incubation was 1 hour.

IHC: Paraffin embedded Human Kidney. Recommended concentration: 5µg/ml.

Species Reactivity

Tested: Human, Mouse

Expected from sequence similarity: Human, Mouse, Rat, Dog, Pig, Cow

Specific Reference

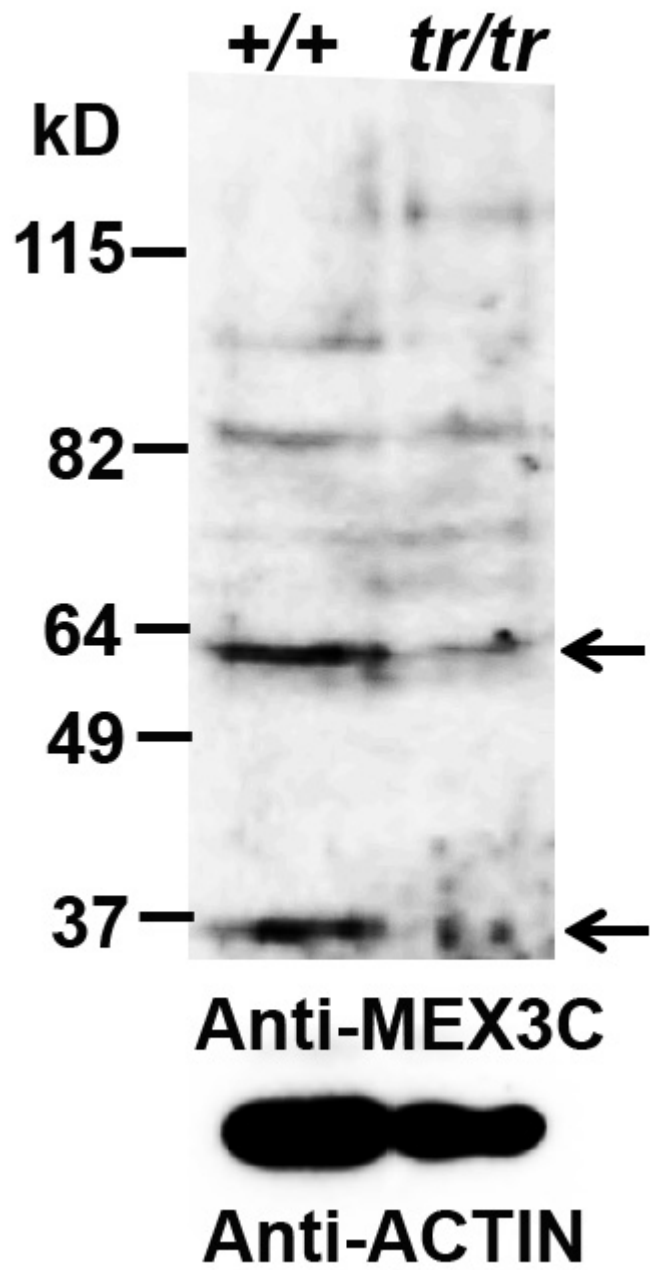
This antibody has been successfully used in Western blot on Human and Mouse:

Li X, Li Y, Liu C, Jin M, Lu B.

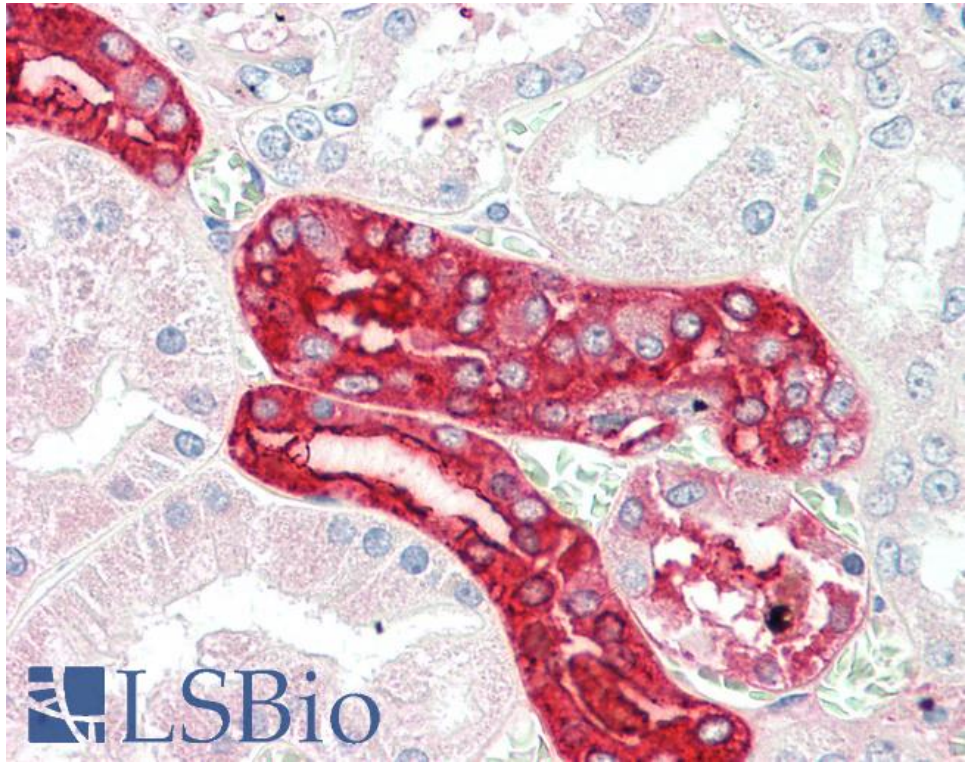
Oocyte-Specific Expression of Mouse MEX3C652AA in the Ovary and Its Potential Role in Regulating Maternal Fos mRNA.

Biol Reprod. 2016 Apr 6. pii: biolreprod.115.136630

PMID: 27053362



EB11536 (0.2µg/ml) staining of Mouse Testis (+/+ is wt, trp/trp is knock-down) lysate (35µg protein in RIPA buffer). Data obtained by Dr. B. Lu, Wake Forest Baptist Medical Center, Winston-Salem, NC, USA. Detected by chemiluminescence.



EB11536 (5µg/ml) staining of paraffin embedded Human Kidney. Steamed antigen retrieval with citrate buffer pH 6, AP-staining.