



# SZABO SCANDIC

Part of Europa Biosite

## Produktinformation



Forschungsprodukte & Biochemikalien



Zellkultur & Verbrauchsmaterial



Diagnostik & molekulare Diagnostik



Laborgeräte & Service

Weitere Information auf den folgenden Seiten!  
See the following pages for more information!



### Lieferung & Zahlungsart

siehe unsere [Liefer- und Versandbedingungen](#)

### Zuschläge

- Mindermengenzuschlag
- Trockeneiszuschlag
- Gefahrgutzuschlag
- Expressversand

### SZABO-SCANDIC HandelsgmbH

Quellenstraße 110, A-1100 Wien

T. +43(0)1 489 3961-0

F. +43(0)1 489 3961-7

[mail@szabo-scandic.com](mailto:mail@szabo-scandic.com)

[www.szabo-scandic.com](http://www.szabo-scandic.com)

[linkedin.com/company/szaboscandic](https://www.linkedin.com/company/szaboscandic) 



## UK Office

### Everest Biotech Ltd

Cherwell Innovation Centre  
77 Heyford Park  
Upper Heyford  
Oxfordshire  
OX25 5HD  
UK

Enquiries:

[info@everestbiotech.com](mailto:info@everestbiotech.com)

Sales:

[sales@everestbiotech.com](mailto:sales@everestbiotech.com)

Tech support:

[support@everestbiotech.com](mailto:support@everestbiotech.com)

Tel: +44 (0)1869 238326

Fax: +44 (0)1869 238327

## US Office

### Everest Biotech c/o Abcore

405 Maple Street, Suite A106  
Ramona,  
CA 92065  
USA

Inquiries:

[info@everestbiotech.com](mailto:info@everestbiotech.com)

Sales:

[usasales@everestbiotech.com](mailto:usasales@everestbiotech.com)

Tech support:

[support@everestbiotech.com](mailto:support@everestbiotech.com)

Tel: 888-320-4628 (toll-free)

Fax: 888-841-9041

[www.everestbiotech.com](http://www.everestbiotech.com)

**Research Use Only. Not for  
diagnostic or therapeutic use.**

## EB11598 - Goat Anti-ZNRF1 (mouse) Antibody

Size: 100µg specific antibody in 200µl



### Target Protein

**Principal Names:** B830022L21Rik, E3 ubiquitin-protein ligase ZNRF1, MGC101991, nerve injury-induced gene 283 protein, nin283, peripheral nerve injury protein nin283, ring finger protein 42, Rnf42, zinc and ring finger 1, zinc ring finger protein 1, zinc/RING finger protein 1, Znrf1, Zrfp1

**Official Symbol:** Znrf1

**Accession Number(s):** NP\_573469.1; NP\_001162093.1

**Human GeneID(s):** [84937](#)

**Non-Human GeneID(s):** 170737 (mouse), 690769 (rat)

**Important Comments:** This antibody is expected to recognize reported isoforms a and b (NP\_573469.1; NP\_001162093.1). Reported variants represent identical protein: NP\_001162092.1, NP\_573469.1

### Immunogen

Peptide with sequence C-SDSTYAHGNGYQET, from the internal region of the protein sequence according to NP\_573469.1; NP\_001162093.1.

Please note the [peptide](#) is available for sale.

### Purification and Storage

Purified from goat serum by ammonium sulphate precipitation followed by antigen affinity chromatography using the immunizing peptide.

Supplied at 0.5 mg/ml in Tris saline, 0.02% sodium azide, pH7.3 with 0.5% bovine serum albumin.

Aliquot and store at -20°C. Minimize freezing and thawing.

### Applications Tested

**Peptide ELISA:** antibody detection limit dilution 1:32000.

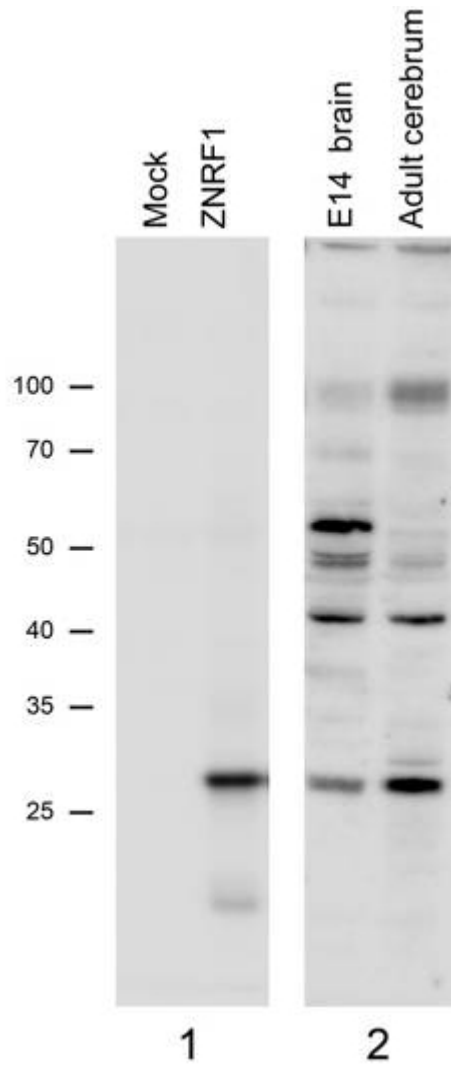
**Western blot:** Approx 28kDa band observed in Mouse embryo and adult Brain lysates (right panel), consistent with the observed band in transfected N2a cells transiently expressing Znrf1 (left panel) Calculated MW of 23.8kDa according to NP\_573469.1. Recommended concentration: 1-3µg/ml. Data obtained from Dr. Shuji Wakatsuki, National Institute of Neuroscience, Tokyo, Japan

**IHC:** In paraffin embedded Mouse Cerebral Cortex shows colabeling with Neurofilament M. Recommended concentration, 10µg/ml. Data obtained from Dr. Shuji Wakatsuki, National Institute of Neuroscience, Tokyo, Japan. Paraffin embedded Human Brain (Cerebellum). Recommended concentration: 5µg/ml.

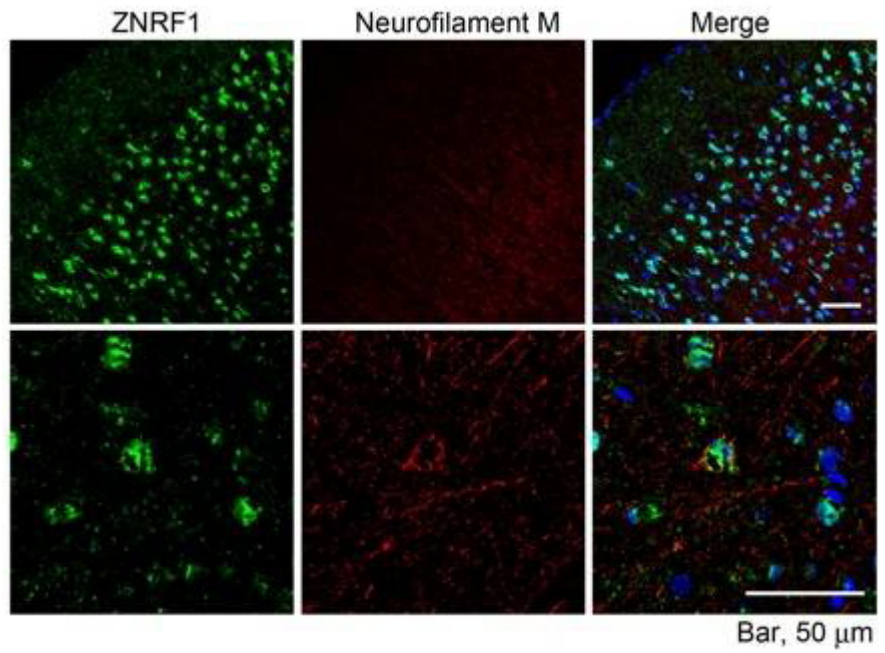
### Species Reactivity

**Tested:** Human, Mouse

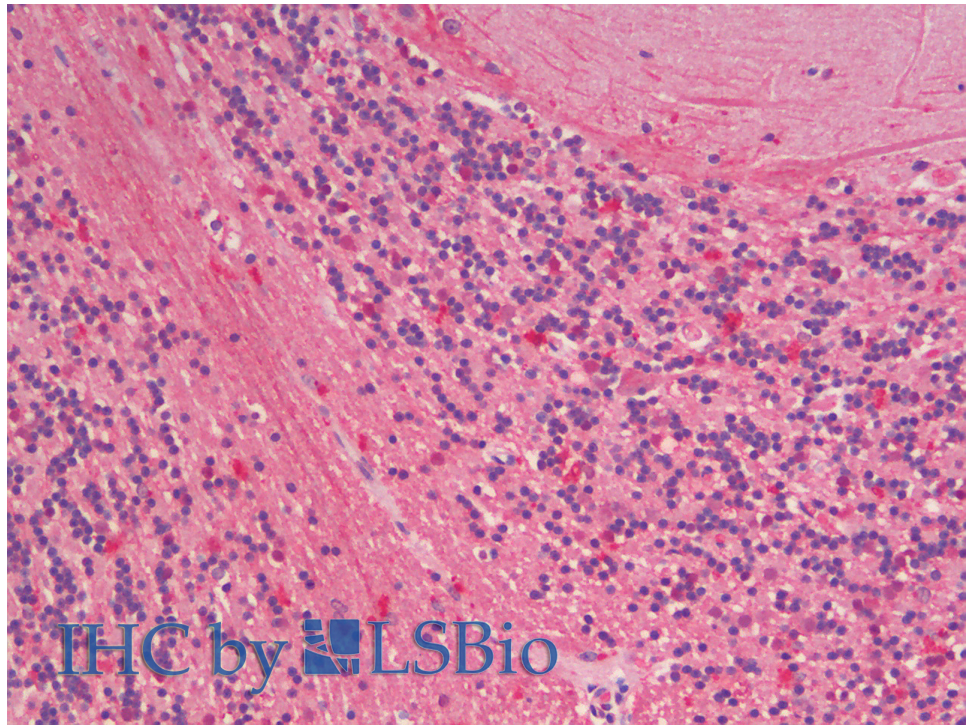
**Expected from sequence similarity:** Human, Mouse, Rat, Dog, Pig, Cow



N2a overexpressing Mouse Znr1 (mock transfection in first lane) and probed with EB11598 (1 $\mu$ g/ml), also staining of Mouse Brain lysates (Embryo E14 and adult cerebellum). Primary incubation was 1 hour. Detected by chemiluminescence.



EB11598 (10µg/ml) staining of paraffin embedded Mouse Cerebral Cortex. Microwaved antigen retrieval with citrate buffer pH 6, streptavidine-Alexa 488-staining after biotinylated anti-goat secondary. The Neurofilament M was labeled by Millipore AB1987 (1:100).



EB11598 (5µg/ml) staining of paraffin embedded Human Cerebellum. Steamed antigen retrieval with citrate buffer pH 6, AP-staining.