



# SZABO SCANDIC

Part of Europa Biosite

## Produktinformation



Forschungsprodukte & Biochemikalien



Zellkultur & Verbrauchsmaterial



Diagnostik & molekulare Diagnostik



Laborgeräte & Service

Weitere Information auf den folgenden Seiten!  
See the following pages for more information!



### Lieferung & Zahlungsart

siehe unsere [Liefer- und Versandbedingungen](#)

### Zuschläge

- Mindermengenzuschlag
- Trockeneiszuschlag
- Gefahrgutzuschlag
- Expressversand

### SZABO-SCANDIC HandelsgmbH

Quellenstraße 110, A-1100 Wien

T. +43(0)1 489 3961-0

F. +43(0)1 489 3961-7

[mail@szabo-scandic.com](mailto:mail@szabo-scandic.com)

[www.szabo-scandic.com](http://www.szabo-scandic.com)

[linkedin.com/company/szaboscandic](https://www.linkedin.com/company/szaboscandic) 



## EB11645 - Goat Anti-VEGFA (aa387-399) Antibody

Size: 100µg specific antibody in 200µl



### UK Office

#### Everest Biotech Ltd

Cherwell Innovation Centre  
77 Heyford Park  
Upper Heyford  
Oxfordshire  
OX25 5HD  
UK

Enquiries:

[info@everestbiotech.com](mailto:info@everestbiotech.com)

Sales:

[sales@everestbiotech.com](mailto:sales@everestbiotech.com)

Tech support:

[support@everestbiotech.com](mailto:support@everestbiotech.com)

Tel: +44 (0)1869 238326

Fax: +44 (0)1869 238327

### US Office

#### Everest Biotech c/o Abcore

405 Maple Street, Suite A106  
Ramona,  
CA 92065  
USA

Inquiries:

[info@everestbiotech.com](mailto:info@everestbiotech.com)

Sales:

[usasales@everestbiotech.com](mailto:usasales@everestbiotech.com)

Tech support:

[support@everestbiotech.com](mailto:support@everestbiotech.com)

Tel: 888-320-4628 (toll-free)

Fax: 888-841-9041

[www.everestbiotech.com](http://www.everestbiotech.com)

**Research Use Only. Not for  
diagnostic or therapeutic use.**

### Target Protein

**Principal Names:** MGC70609, MVCD1, OTTHUMP00000016487,

OTTHUMP00000016488, OTTHUMP000000165985, OTTHUMP000000165986,

OTTHUMP000000165987, OTTHUMP000000224107, OTTHUMP000000224108,

OTTHUMP000000224109, OTTHUMP000000224153, OTTHUMP000000224154,

OTTHUMP000000224423, OTTHUMP000000224424, OTTHUMP000000224425,

OTTHUMP000000224426, OTTHUMP000000224427, OTTHUMP000000224428,

OTTHUMP000000224429, OTTHUMP000000224430, vascular endothelial growth factor A,

vascular permeability factor, VEGF, VEGFA, VPF

**Official Symbol:** VEGFA

**Accession Number(s):** NP\_001020537.2; NP\_003367.4; NP\_001020538.2;

NP\_001020539.2; NP\_001028928.1; NP\_001165094.1; NP\_001165095.1;

NP\_001165096.1; NP\_001165097.1; NP\_001165100.1

**Human GeneID(s):** [7422](#)

**Non-Human GeneID(s):** 22339 (mouse), 83785 (rat)

**Important Comments:** This antibody is expected to recognize following isoforms: a (45.5kDa), b (43.6kDa), c (42.8kDa), d (40.7kDa), g (40.6kDa), i (27.0kDa), j (25.2kDa), k (24.4kDa), o (22.3kDa) and s (18.9kDa)

### Immunogen

Peptide with sequence KNTDSRCKARQLE, from the C Terminus of the protein sequence according to NP\_001020537.2; NP\_003367.4; NP\_001020538.2; NP\_001020539.2;

NP\_001028928.1; NP\_001165094.1; NP\_001165095.1; NP\_001165096.1;

NP\_001165097.1; NP\_001165100.1.

Please note the [peptide](#) is available for sale.

### Purification and Storage

Purified from goat serum by ammonium sulphate precipitation followed by antigen affinity chromatography using the immunizing peptide.

Supplied at 0.5 mg/ml in Tris saline, 0.02% sodium azide, pH7.3 with 0.5% bovine serum albumin.

Aliquot and store at -20°C. Minimize freezing and thawing.

### Applications Tested

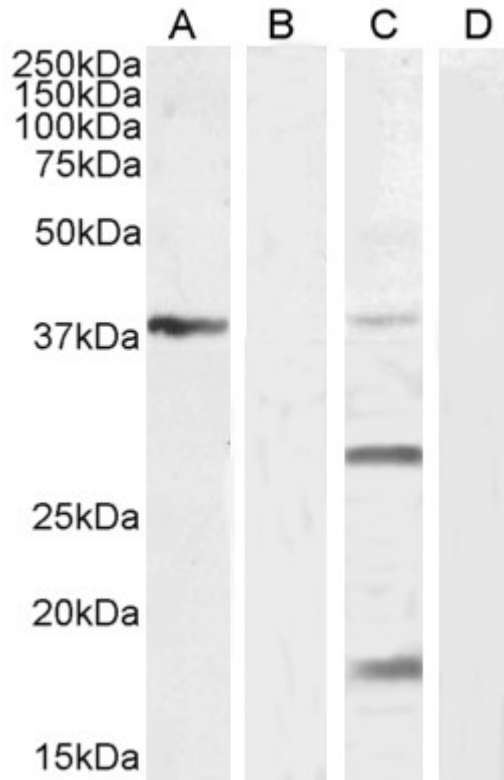
**Peptide ELISA:** antibody detection limit dilution 1:128000.

**Western blot:** Approx 38kDa band observed in Mouse Liver lysates, 38+28+18kDa in Human Kidney lysates and approx 18kDa in lysates of cell line K562 (calculated MW of 40.3kDa according to Mouse NP\_033531.3, 40.6kDa according to Human NP\_001028928.1, 27.0kDa according to Human NP\_001165094.1 and 18.9kDa according to Human NP\_001273973.1). These bands were all successfully blocked by incubation with the immunizing peptide.. Recommended concentration: 0.3-1µg/ml. Primary incubation 1 hour at room temperature.

### Species Reactivity

**Tested:** Human, Mouse

**Expected from sequence similarity:** Human, Mouse, Rat, Cat, Dog, Pig, Cow



EB11645 (1 $\mu$ g/ml) staining of Mouse Liver lysate (A) + Peptide (B), Human Kidney lysate (C) + Peptide (D) (35 $\mu$ g protein in RIPA buffer) Detected by chemiluminescence.



EB11645 (1 $\mu$ g/ml) staining of K562 cell lysate (A) + Peptide (B) (35 $\mu$ g protein in RIPA buffer). Detected by chemiluminescence.