



# SZABO SCANDIC

Part of Europa Biosite

## Produktinformation



Forschungsprodukte & Biochemikalien



Zellkultur & Verbrauchsmaterial



Diagnostik & molekulare Diagnostik



Laborgeräte & Service

Weitere Information auf den folgenden Seiten!  
See the following pages for more information!



### Lieferung & Zahlungsart

siehe unsere [Liefer- und Versandbedingungen](#)

### Zuschläge

- Mindermengenzuschlag
- Trockeneiszuschlag
- Gefahrgutzuschlag
- Expressversand

### SZABO-SCANDIC HandelsgmbH

Quellenstraße 110, A-1100 Wien

T. +43(0)1 489 3961-0

F. +43(0)1 489 3961-7

[mail@szabo-scandic.com](mailto:mail@szabo-scandic.com)

[www.szabo-scandic.com](http://www.szabo-scandic.com)

[linkedin.com/company/szaboscandic](https://www.linkedin.com/company/szaboscandic) 



## UK Office

### Everest Biotech Ltd

Cherwell Innovation Centre  
77 Heyford Park  
Upper Heyford  
Oxfordshire  
OX25 5HD  
UK

Enquiries:

[info@everestbiotech.com](mailto:info@everestbiotech.com)

Sales:

[sales@everestbiotech.com](mailto:sales@everestbiotech.com)

Tech support:

[support@everestbiotech.com](mailto:support@everestbiotech.com)

Tel: +44 (0)1869 238326

Fax: +44 (0)1869 238327

## US Office

### Everest Biotech c/o Abcore

405 Maple Street, Suite A106  
Ramona,  
CA 92065  
USA

Inquiries:

[info@everestbiotech.com](mailto:info@everestbiotech.com)

Sales:

[usasales@everestbiotech.com](mailto:usasales@everestbiotech.com)

Tech support:

[support@everestbiotech.com](mailto:support@everestbiotech.com)

Tel: 888-320-4628 (toll-free)

Fax: 888-841-9041

[www.everestbiotech.com](http://www.everestbiotech.com)

**Research Use Only. Not for  
diagnostic or therapeutic use.**

## EB11650 - Goat Anti-PCNA Antibody

Size: 100µg specific antibody in 200µl



### Target Protein

**Principal Names:** cyclin, DNA polymerase delta auxiliary protein, MGC8367, OTTHUMP00000030190, PCNA, proliferating cell nuclear antigen, ATLD2

**Official Symbol:** PCNA

**Accession Number(s):** NP\_002583.1

**Human GeneID(s):** [5111](#)

**Non-Human GeneID(s):** 18538 (mouse), 25737 (rat)

**Important Comments:** Reported variants represent identical protein: NP\_872590.1, NP\_002583.1

### Immunogen

Peptide with sequence C-NGNIKLSQTSNVD, from the internal region of the protein sequence according to NP\_002583.1.

Please note the [peptide](#) is available for sale.

### Purification and Storage

Purified from goat serum by ammonium sulphate precipitation followed by antigen affinity chromatography using the immunizing peptide.

Supplied at 0.5 mg/ml in Tris saline, 0.02% sodium azide, pH7.3 with 0.5% bovine serum albumin.

Aliquot and store at -20°C. Minimize freezing and thawing.

### Applications Tested

**Peptide ELISA:** antibody detection limit dilution 1:128000.

**Western blot:** Approx 30kDa band observed in lysates of cell line HeLa (calculated MW of 28.8kDa according to Human NP\_002583.1). Approx.33kDa band observed in lysates of cell line NIH3T3 and in Mouse and Rat Testis and Pig Spleen lysates (calculated MW of 28.8kDa according to Mouse NP\_035175.1, Rat NP\_071776.1 and Pig NP\_001278854.1). Primary incubation was 1 hour. The observed molecular weight corresponds to earlier findings in literature with different antibodies (Gilljam et al, , J Cell Biol. 2009 Sep 7;186(5):645-54.). Recommended concentration: 0.01-0.03µg/ml.

**IHC:** Paraffin embedded Human Testis. Recommended concentration: 5-6µg/ml.

**Additional validation:** This antibody has been successfully used in the following paper: Sikorski et al. (2018) PMID: 30377371.

### Species Reactivity

**Tested:** Human, Mouse, Rat, Pig

**Expected from sequence similarity:** Human, Mouse, Rat, Dog, Pig, Cow

### Specific Reference

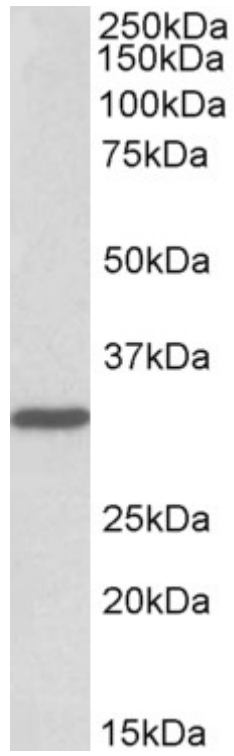
**This antibody has been successfully used in the following paper:**

Krzysztof Sikorski, Adi Mehta, Marit Inngjerdingen, Flourina Thakor, Simon Kling, Tomas Kalina, Tuula A. Nyman, Maria Ekman Stensland, Wei Zhou, Gustavo A. De Souza, Lars Holden, Jan Stuchly, Markus Templin and Fridtjof Lund-Johansen

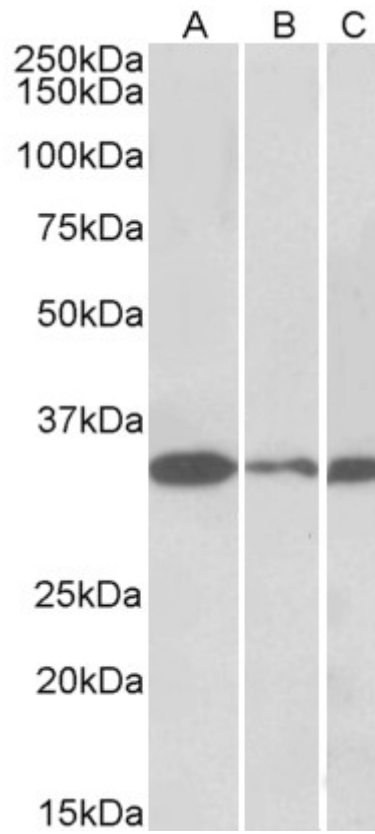
A high-throughput pipeline for validation of antibodies

Nat Methods. 2018 Nov;15(11):909-912

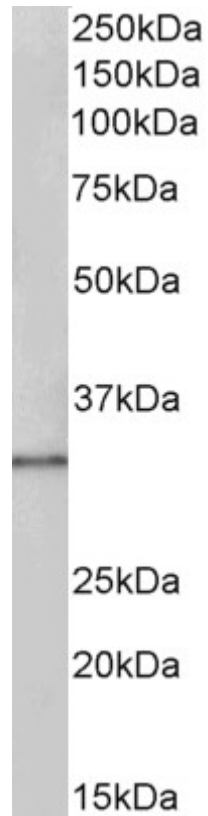
PMID: 30377371



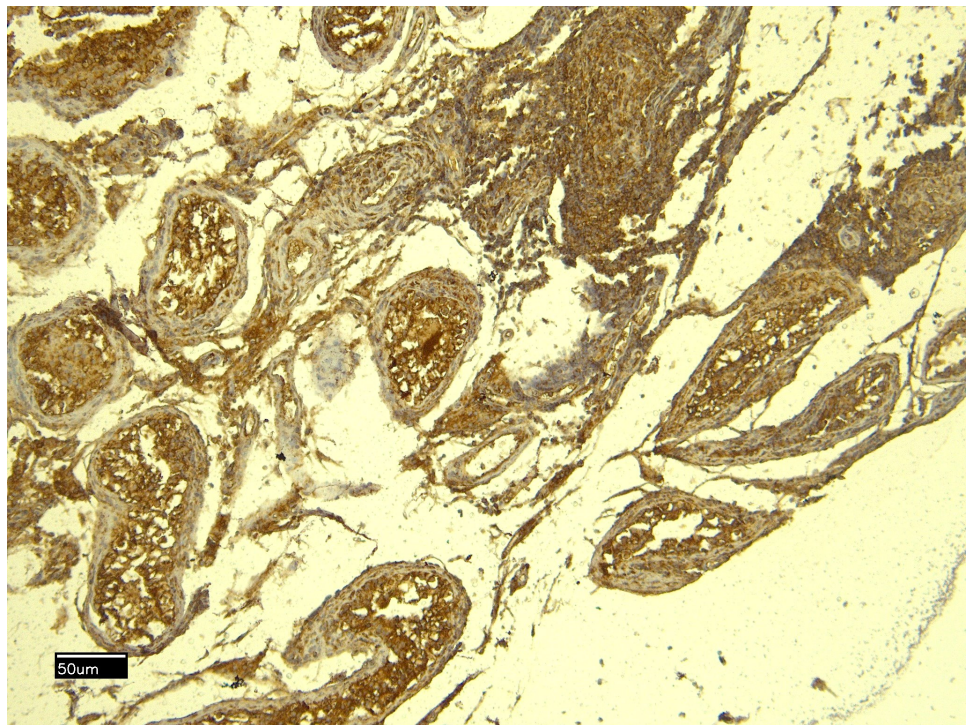
EB11650 (0.01 $\mu$ g/ml) staining of HeLa lysate (35 $\mu$ g protein in RIPA buffer). Detected by chemiluminescence.



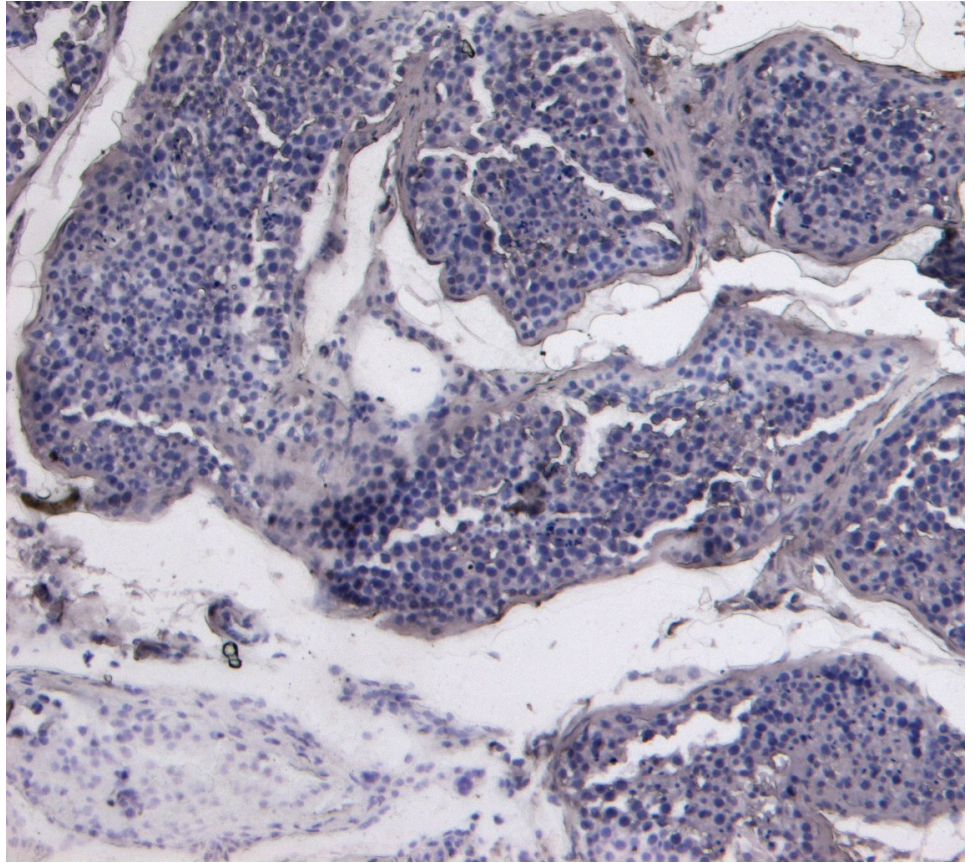
EB11650 (0.01 $\mu$ g/ml) staining of NIH3T3 (A), Mouse Testis (B) and Rat Testis (C) lysates (35 $\mu$ g protein in RIPA buffer). Detected by chemiluminescence.



EB11650 (0.03 $\mu$ g/ml) staining of Pig Spleen lysate (35 $\mu$ g protein in RIPA buffer). Detected by chemiluminescence.



EB11650 (6 $\mu$ g/ml) staining of paraffin embedded Human Testis. Heat induced antigen retrieval with citrate buffer pH 6, HRP-staining.



EB11650 Negative Control showing staining of paraffin embedded Human Testis, with no primary antibody.