



# SZABO SCANDIC

Part of Europa Biosite

## Produktinformation



Forschungsprodukte & Biochemikalien



Zellkultur & Verbrauchsmaterial



Diagnostik & molekulare Diagnostik



Laborgeräte & Service

Weitere Information auf den folgenden Seiten!  
See the following pages for more information!



### Lieferung & Zahlungsart

siehe unsere [Liefer- und Versandbedingungen](#)

### Zuschläge

- Mindermengenzuschlag
- Trockeneiszuschlag
- Gefahrgutzuschlag
- Expressversand

### SZABO-SCANDIC HandelsgmbH

Quellenstraße 110, A-1100 Wien

T. +43(0)1 489 3961-0

F. +43(0)1 489 3961-7

[mail@szabo-scandic.com](mailto:mail@szabo-scandic.com)

[www.szabo-scandic.com](http://www.szabo-scandic.com)

[linkedin.com/company/szaboscandic](https://www.linkedin.com/company/szaboscandic) 



## UK Office

### Everest Biotech Ltd

Cherwell Innovation Centre  
77 Heyford Park  
Upper Heyford  
Oxfordshire  
OX25 5HD  
UK

Enquiries:

[info@everestbiotech.com](mailto:info@everestbiotech.com)

Sales:

[sales@everestbiotech.com](mailto:sales@everestbiotech.com)

Tech support:

[support@everestbiotech.com](mailto:support@everestbiotech.com)

Tel: +44 (0)1869 238326

Fax: +44 (0)1869 238327

## US Office

### Everest Biotech c/o Abcore

405 Maple Street, Suite A106  
Ramona,  
CA 92065  
USA

Inquiries:

[info@everestbiotech.com](mailto:info@everestbiotech.com)

Sales:

[usasales@everestbiotech.com](mailto:usasales@everestbiotech.com)

Tech support:

[support@everestbiotech.com](mailto:support@everestbiotech.com)

Tel: 888-320-4628 (toll-free)

Fax: 888-841-9041

[www.everestbiotech.com](http://www.everestbiotech.com)

**Research Use Only. Not for  
diagnostic or therapeutic use.**

## EB11713 - Goat Anti-Alpha-synuclein Antibody

Size: 100µg specific antibody in 200µl



### Target Protein

**Principal Names:** alpha-synuclein, NACP, non A-beta component of AD amyloid, PARK1, PARK4, PD1, SNCA, synuclein alpha-140, synuclein, alpha (non A4 component of amyloid precursor)

**Official Symbol:** SNCA

**Accession Number(s):** NP\_009292.1; NP\_000336.1

**Human GeneID(s):** [6622](#)

**Non-Human GeneID(s):** 20617 (mouse), 29219 (rat)

**Important Comments:** This antibody is expected to recognize both reported isoforms (NP\_009292.1; NP\_000336.1). Reported variants represent identical protein: NP\_000336.1, NP\_001139527.1, NP\_001139526.1

### Immunogen

Peptide with sequence C-ATGFVKKDLGK, from the internal region of the protein sequence according to NP\_009292.1; NP\_000336.1.

Please note the [peptide](#) is available for sale.

### Purification and Storage

Purified from goat serum by ammonium sulphate precipitation followed by antigen affinity chromatography using the immunizing peptide.

Supplied at 0.5 mg/ml in Tris saline, 0.02% sodium azide, pH7.3 with 0.5% bovine serum albumin.

Aliquot and store at -20°C. Minimize freezing and thawing.

### Applications Tested

**Peptide ELISA:** antibody detection limit dilution 1:128000.

**Western blot:** Approx 17kDa band observed in Human Brain (Amygdala) and fetal Mouse Brain lysates (calculated MW of 14.5kDa according to Human NP\_000336.1 and Mouse NP\_033247.1). This molecular weight is routinely observed by other sources.

Recommended concentration: 0.1-0.3µg/ml. Primary incubation was 1 hour.

**IHC:** Paraffin embedded Human Brain (Cerebellum). Recommended concentration: 5µg/ml.

### Species Reactivity

**Tested:** Human, Mouse

**Expected from sequence similarity:** Human, Mouse, Rat, Dog, Pig

### Specific References

**This antibody has been successfully used in the following paper:**

Karina J. Vargas, P. L. Colosi, Eric Girardi, Jae-Min Park, Sreemanga S. Chandra  
α-Synuclein facilitates clathrin assembly in synaptic vesicle endocytosis  
(2021) <https://doi.org/10.1101/2020.04.29.069344>

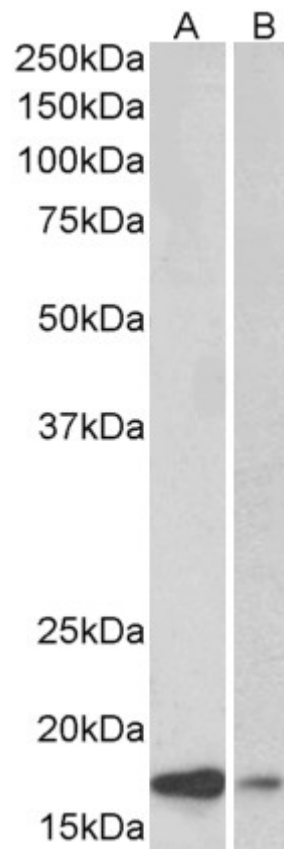
PMID: 0

**This antibody has been successfully used in Western blot on Human:**

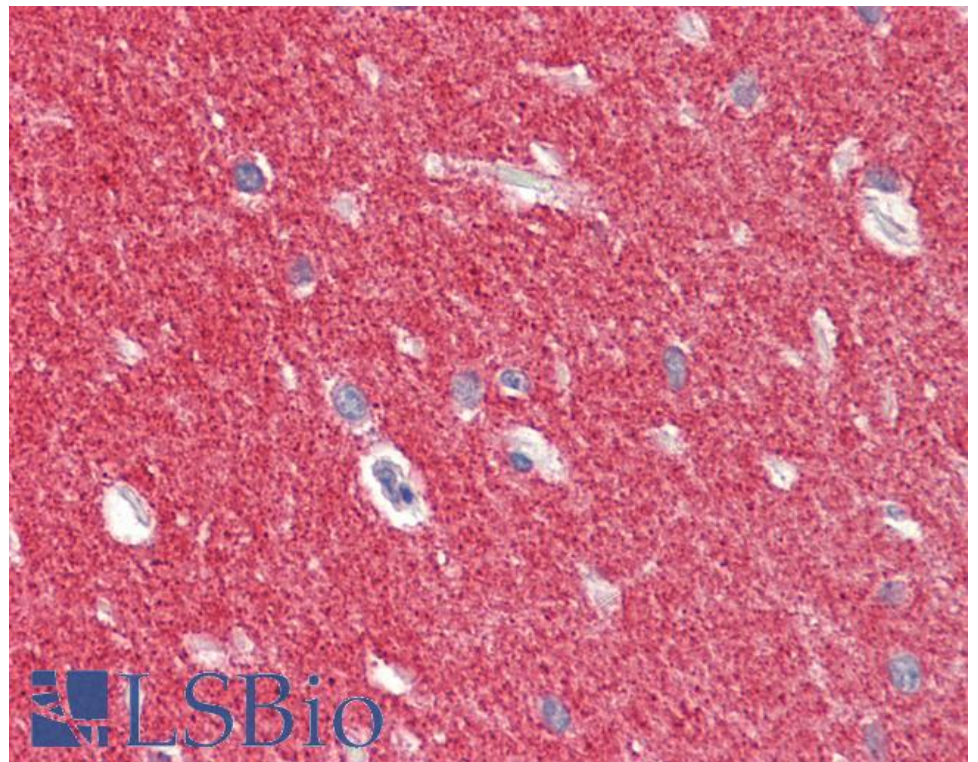
Sandro Huenchuguala & Birgitta Sjödin & Bengt Mannervik & Juan Segura-Aguilar  
Novel Alpha-Synuclein Oligomers Formed with the Aminochrome-Glutathione Conjugate  
Are Not Neurotoxic

Neurotox Res. 2019 Feb;35(2):432-440.

PMID: 30343424



EB11713 (0.1µg/ml) staining of Human Amygdala (A) and fetal Mouse (B) Brain lysate (35µg protein in RIPA buffer). Detected by chemiluminescence.



EB11713 (5µg/ml) staining of paraffin embedded Human Cerebellum. Steamed antigen retrieval with citrate buffer pH 6, AP-staining.