



# SZABO SCANDIC

Part of Europa Biosite

## Produktinformation



Forschungsprodukte & Biochemikalien



Zellkultur & Verbrauchsmaterial



Diagnostik & molekulare Diagnostik



Laborgeräte & Service

Weitere Information auf den folgenden Seiten!  
See the following pages for more information!



### Lieferung & Zahlungsart

siehe unsere [Liefer- und Versandbedingungen](#)

### Zuschläge

- Mindermengenzuschlag
- Trockeneiszuschlag
- Gefahrgutzuschlag
- Expressversand

### SZABO-SCANDIC HandelsgmbH

Quellenstraße 110, A-1100 Wien

T. +43(0)1 489 3961-0

F. +43(0)1 489 3961-7

[mail@szabo-scandic.com](mailto:mail@szabo-scandic.com)

[www.szabo-scandic.com](http://www.szabo-scandic.com)

[linkedin.com/company/szaboscandic](https://www.linkedin.com/company/szaboscandic) 



## UK Office

### Everest Biotech Ltd

Cherwell Innovation Centre  
77 Heyford Park  
Upper Heyford  
Oxfordshire  
OX25 5HD  
UK

Enquiries:

[info@everestbiotech.com](mailto:info@everestbiotech.com)

Sales:

[sales@everestbiotech.com](mailto:sales@everestbiotech.com)

Tech support:

[support@everestbiotech.com](mailto:support@everestbiotech.com)

Tel: +44 (0)1869 238326

Fax: +44 (0)1869 238327

## US Office

### Everest Biotech c/o Abcore

405 Maple Street, Suite A106  
Ramona,  
CA 92065  
USA

Inquiries:

[info@everestbiotech.com](mailto:info@everestbiotech.com)

Sales:

[usasales@everestbiotech.com](mailto:usasales@everestbiotech.com)

Tech support:

[support@everestbiotech.com](mailto:support@everestbiotech.com)

Tel: 888-320-4628 (toll-free)

Fax: 888-841-9041

[www.everestbiotech.com](http://www.everestbiotech.com)

**Research Use Only. Not for  
diagnostic or therapeutic use.**

## EB11719 - Goat Anti-MMP3 (aa459-473) Antibody

Size: 100µg specific antibody in 200µl



### Target Protein

**Principal Names:** CHDS6, matrix metalloproteinase 3 (stromelysin 1, progelatinase), matrix metalloproteinase 3 (stromelysin 1, progelatinase), matrix metalloproteinase-3, MGC126102, MGC126103, MGC126104, MMP3, MMP-3, OTTHUMP00000045949, proteoglycan, SL-1, STMY, STMY1, STR1

**Official Symbol:** MMP3

**Accession Number(s):** NP\_002413.1

**Human GeneID(s):** [4314](#)

### Immunogen

Peptide with sequence C-DPNAKKVTHLKSNS, from the C Terminus of the protein sequence according to NP\_002413.1.

Please note the [peptide](#) is available for sale.

### Purification and Storage

Purified from goat serum by ammonium sulphate precipitation followed by antigen affinity chromatography using the immunizing peptide.

Supplied at 0.5 mg/ml in Tris saline, 0.02% sodium azide, pH7.3 with 0.5% bovine serum albumin.

Aliquot and store at -20°C. Minimize freezing and thawing.

### Applications Tested

**Peptide ELISA:** antibody detection limit dilution 1:128000.

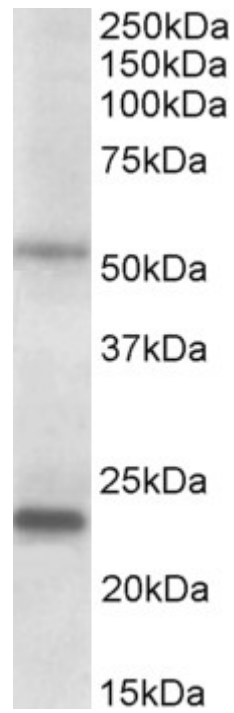
**Western blot:** Approx 55kDa band observed in Human Prostate and approx. 60kDa band in Mouse Eye lysates (calculated MW of 54.0 kDa according to Human NP\_002413.1 and Mouse NP\_034939.1). Recommended concentration: 0.1-0.3µg/ml. An additional band of unknown identity was also consistently observed at 24kDa in Human. This band was successfully blocked by incubation with the immunizing peptide.

**IHC:** Paraffin embedded Human Kidney. Recommended concentration: 4-6µg/ml.

### Species Reactivity

**Tested:** Human, Mouse

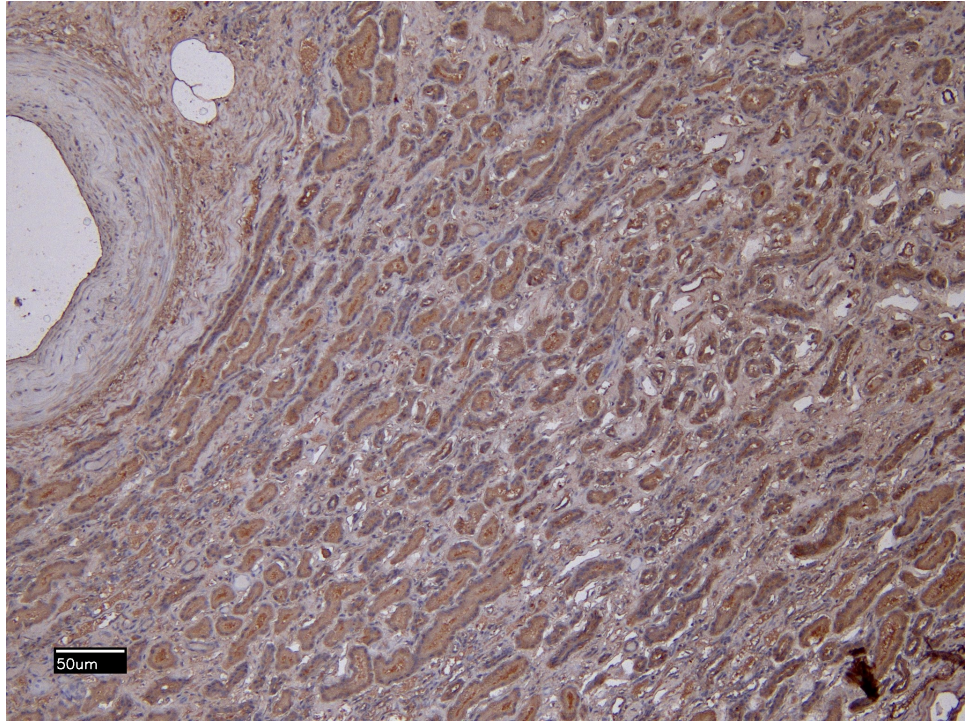
**Expected from sequence similarity:** Human



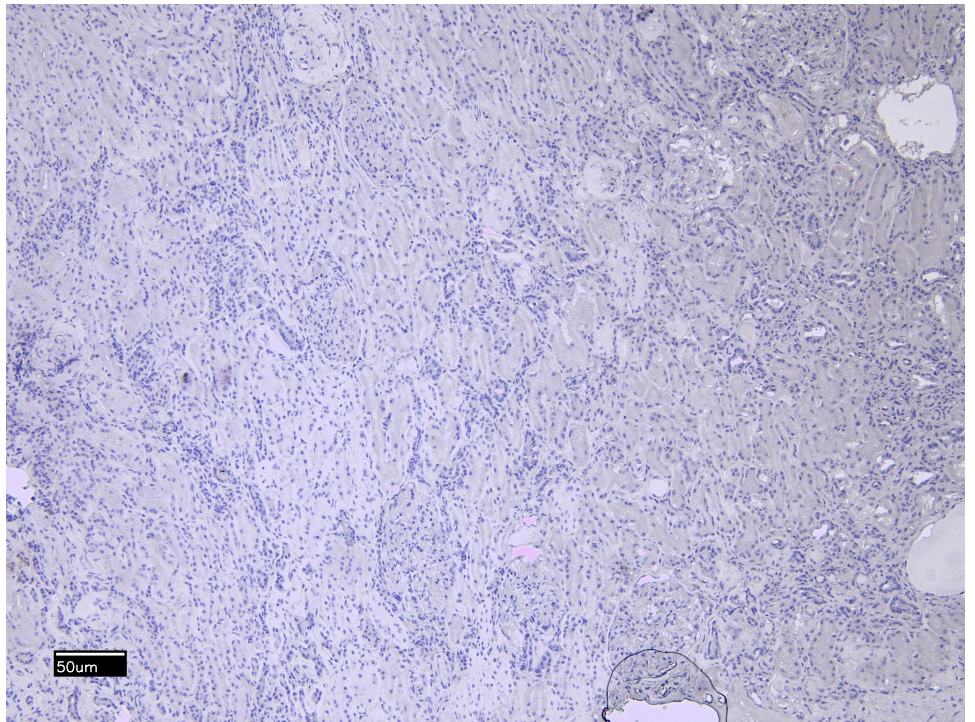
EB11719 (0.2 $\mu$ g/ml) staining of Human Prostate lysate (35 $\mu$ g protein in RIPA buffer). Primary incubation was 1 hour. Detected by chemiluminescence.



EB11719 (0.3 $\mu$ g/ml) staining of Mouse Eye lysate (35 $\mu$ g protein in RIPA buffer). Primary incubation was 1 hour. Detected by chemiluminescence.



EB11719 (6µg/ml) staining of paraffin embedded Human Kidney. Heat induced antigen retrieval with citrate buffer pH 6, HRP-staining.



EB11719 Negative Control showing staining of paraffin embedded Human Kidney, with no primary antibody.