



SZABO SCANDIC

Part of Europa Biosite

Produktinformation



Forschungsprodukte & Biochemikalien



Zellkultur & Verbrauchsmaterial



Diagnostik & molekulare Diagnostik



Laborgeräte & Service

Weitere Information auf den folgenden Seiten!
See the following pages for more information!



Lieferung & Zahlungsart

siehe unsere [Liefer- und Versandbedingungen](#)

Zuschläge

- Mindermengenzuschlag
- Trockeneiszuschlag
- Gefahrgutzuschlag
- Expressversand

SZABO-SCANDIC HandelsgmbH

Quellenstraße 110, A-1100 Wien

T. +43(0)1 489 3961-0

F. +43(0)1 489 3961-7

mail@szabo-scandic.com

www.szabo-scandic.com

[linkedin.com/company/szaboscandic](https://www.linkedin.com/company/szaboscandic) 



UK Office

Everest Biotech Ltd

Cherwell Innovation Centre
77 Heyford Park
Upper Heyford
Oxfordshire
OX25 5HD
UK

Enquiries:

info@everestbiotech.com

Sales:

sales@everestbiotech.com

Tech support:

support@everestbiotech.com

Tel: +44 (0)1869 238326

Fax: +44 (0)1869 238327

US Office

Everest Biotech c/o Abcore

405 Maple Street, Suite A106
Ramona,
CA 92065
USA

Inquiries:

info@everestbiotech.com

Sales:

usasales@everestbiotech.com

Tech support:

support@everestbiotech.com

Tel: 888-320-4628 (toll-free)

Fax: 888-841-9041

www.everestbiotech.com

**Research Use Only. Not for
diagnostic or therapeutic use.**

EB11747 - Goat Anti-VEGFA (aa288-299) Antibody

Size: 100µg specific antibody in 200µl



Target Protein

Principal Names: MGC70609, MVCD1, OTTHUMP00000016487,

OTTHUMP00000016488, OTTHUMP000000165985, OTTHUMP000000165986,

OTTHUMP000000165987, OTTHUMP000000224107, OTTHUMP000000224108,

OTTHUMP000000224109, OTTHUMP000000224153, OTTHUMP000000224154,

OTTHUMP000000224423, OTTHUMP000000224424, OTTHUMP000000224425,

OTTHUMP000000224426, OTTHUMP000000224427, OTTHUMP000000224428,

OTTHUMP000000224429, OTTHUMP000000224430, vascular endothelial growth factor A,

vascular permeability factor, VEGF, VEGFA, VPF

Official Symbol: VEGFA

Accession Number(s): NP_001020537.2; NP_003367.4; NP_001020538.2;

NP_001020539.2; etc.

Human GeneID(s): [7422](#)

Important Comments: This antibody is expected to recognize all reported isoforms.

Immunogen

Peptide with sequence C-RIKPHQGQHIGE, from the internal region of the protein

sequence according to NP_001020537.2; NP_003367.4; NP_001020538.2;

NP_001020539.2; etc..

Please note the [peptide](#) is available for sale.

Purification and Storage

Purified from goat serum by ammonium sulphate precipitation followed by antigen affinity chromatography using the immunizing peptide.

Supplied at 0.5 mg/ml in Tris saline, 0.02% sodium azide, pH7.3 with 0.5% bovine serum albumin.

Aliquot and store at -20°C. Minimize freezing and thawing.

Applications Tested

Peptide ELISA: antibody detection limit dilution 1:128000.

Western blot: Approx 45kDa band observed in lysates of cell line HEK293 (calculated MW of 45.5kDa according to NP_001020537.2). Recommended concentration:

0.1-0.3µg/ml. Primary incubation was 1 hour. Preliminary testing was unsuccessful on Mouse and Rat (Liver, Kidney and Lung) for this particular batch.

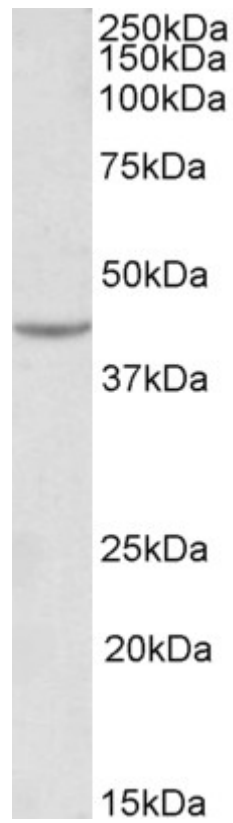
IHC: Paraffin embedded Human Liver and Small Intestine. Recommended concentration: 5µg/ml.

Immunofluorescence: Testing has shown that this antibody stains mitochondria in Mouse NIH3T3 cells at 10µg/ml.

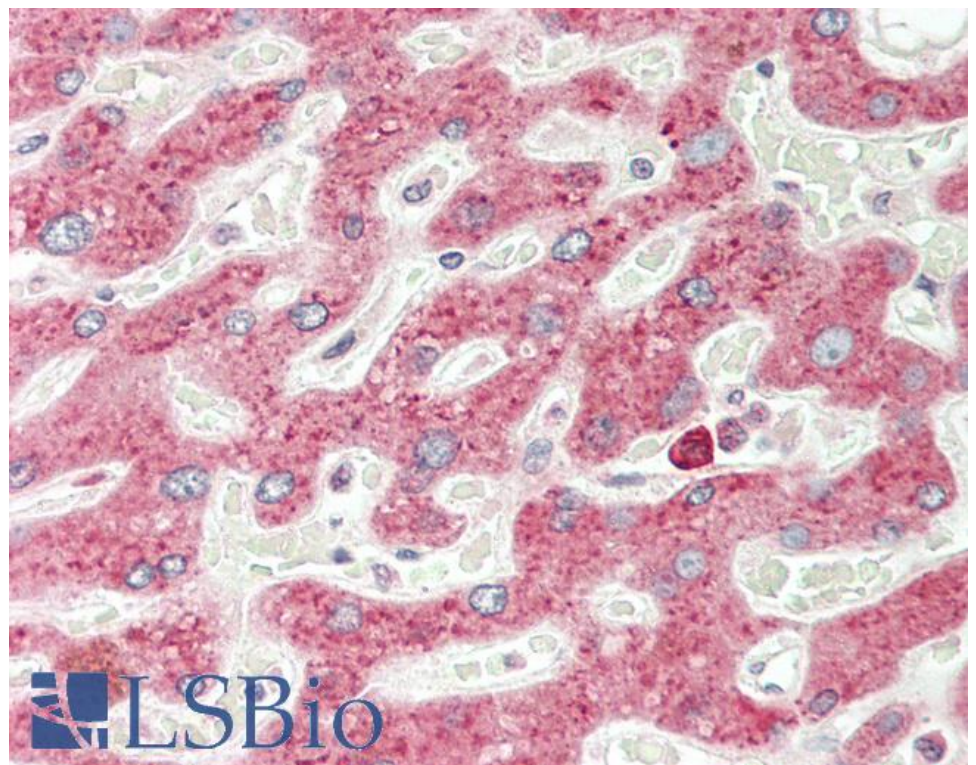
Species Reactivity

Tested: Human

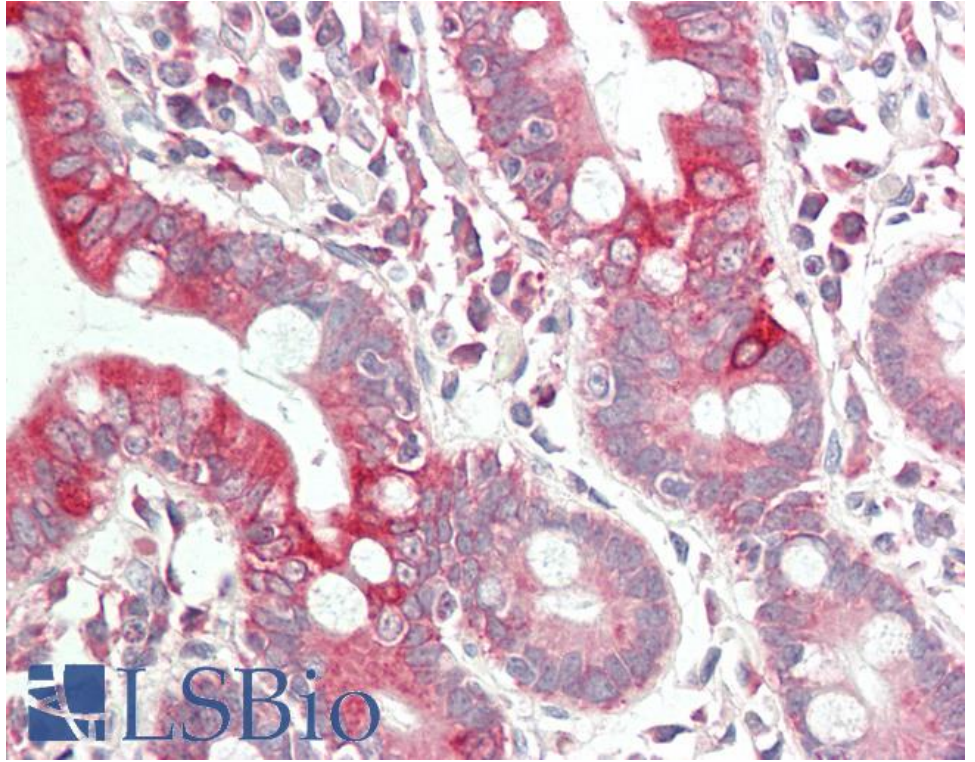
Expected from sequence similarity: Human, Dog, Pig



EB11747 (0.1 $\mu\text{g/ml}$) staining of HEK293 lysate (35 μg protein in RIPA buffer). Detected by chemiluminescence.



EB11747 (5 $\mu\text{g/ml}$) staining of paraffin embedded Human Liver. Steamed antigen retrieval with citrate buffer pH 6, AP-staining.



EB11747 (5µg/ml) staining of paraffin embedded Human Small Intestine. Steamed antigen retrieval with citrate buffer pH 6, AP-staining.