



SZABO SCANDIC

Part of Europa Biosite

Produktinformation



Forschungsprodukte & Biochemikalien



Zellkultur & Verbrauchsmaterial



Diagnostik & molekulare Diagnostik



Laborgeräte & Service

Weitere Information auf den folgenden Seiten!
See the following pages for more information!



Lieferung & Zahlungsart

siehe unsere [Liefer- und Versandbedingungen](#)

Zuschläge

- Mindermengenzuschlag
- Trockeneiszuschlag
- Gefahrgutzuschlag
- Expressversand

SZABO-SCANDIC HandelsgmbH

Quellenstraße 110, A-1100 Wien

T. +43(0)1 489 3961-0

F. +43(0)1 489 3961-7

mail@szabo-scandic.com

www.szabo-scandic.com

[linkedin.com/company/szaboscandic](https://www.linkedin.com/company/szaboscandic) 



UK Office

Everest Biotech Ltd

Cherwell Innovation Centre
77 Heyford Park
Upper Heyford
Oxfordshire
OX25 5HD
UK

Enquiries:

info@everestbiotech.com

Sales:

sales@everestbiotech.com

Tech support:

support@everestbiotech.com

Tel: +44 (0)1869 238326

Fax: +44 (0)1869 238327

US Office

Everest Biotech c/o Abcore

405 Maple Street, Suite A106
Ramona,
CA 92065
USA

Inquiries:

info@everestbiotech.com

Sales:

usasales@everestbiotech.com

Tech support:

support@everestbiotech.com

Tel: 888-320-4628 (toll-free)

Fax: 888-841-9041

www.everestbiotech.com

**Research Use Only. Not for
diagnostic or therapeutic use.**

EB11762 - Goat Anti-TIM-1 Antibody

Size: 100µg specific antibody in 200µl



Target Protein

Principal Names: HAVCR, HAVCR1, HAVCR-1, hepatitis A virus cellular receptor 1, kidney injury molecule 1, KIM1, KIM-1, OTTHUMP00000224005, OTTHUMP00000224052, OTTHUMP00000224053, T cell immunoglobulin domain and mucin domain protein 1, T-cell membrane protein 1, TIM, TIM1, TIM-1, TIMD1, TIMD-1

Official Symbol: HAVCR1

Human GeneID(s): [26762](#)

Important Comments: The immunizing peptide represents part of the extracellular domain. Reported variants represent identical protein: NP_001166864.1, NP_001092884.1, NP_036338.2

Immunogen

Peptide with sequence C-THVTYRKDTRYK, from the internal region of the protein sequence according to .

Please note the [peptide](#) is available for sale.

Purification and Storage

Purified from goat serum by ammonium sulphate precipitation followed by antigen affinity chromatography using the immunizing peptide.

Supplied at 0.5 mg/ml in Tris saline, 0.02% sodium azide, pH7.3 with 0.5% bovine serum albumin.

Aliquot and store at -20°C. Minimize freezing and thawing.

Applications Tested

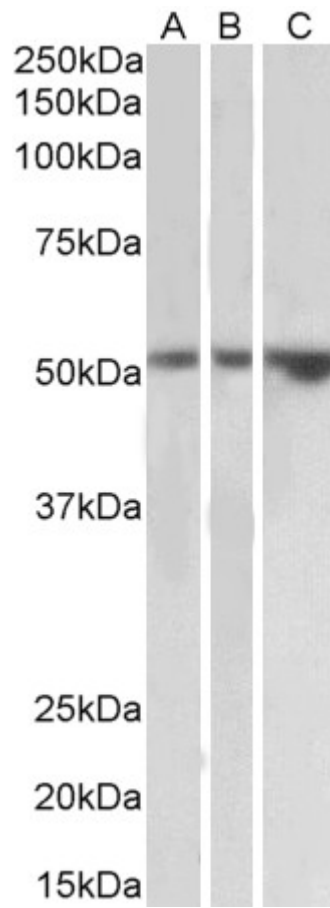
Peptide ELISA: antibody detection limit dilution 1:16000.

Western blot: Approx 52kDa band observed in Human Kidney, Testis and Uterus lysates (calculated MW of 39.2kDa according to NP_036338.2). This molecular weight is routinely observed by other sources. Recommended concentration: 1-3µg/ml.

Species Reactivity

Tested: Human

Expected from sequence similarity: Human



EB11762 (2 μ g/ml) staining of Kidney (A), Testis (B) and Uterus (C) lysates (35 μ g protein in RIPA buffer). Primary incubation was 1 hour. Detected by chemiluminescence.