



SZABO SCANDIC

Part of Europa Biosite

Produktinformation



Forschungsprodukte & Biochemikalien



Zellkultur & Verbrauchsmaterial



Diagnostik & molekulare Diagnostik



Laborgeräte & Service

Weitere Information auf den folgenden Seiten!
See the following pages for more information!



Lieferung & Zahlungsart

siehe unsere [Liefer- und Versandbedingungen](#)

Zuschläge

- Mindermengenzuschlag
- Trockeneiszuschlag
- Gefahrgutzuschlag
- Expressversand

SZABO-SCANDIC HandelsgmbH

Quellenstraße 110, A-1100 Wien

T. +43(0)1 489 3961-0

F. +43(0)1 489 3961-7

mail@szabo-scandic.com

www.szabo-scandic.com

[linkedin.com/company/szaboscandic](https://www.linkedin.com/company/szaboscandic) 



UK Office

Everest Biotech Ltd

Cherwell Innovation Centre
77 Heyford Park
Upper Heyford
Oxfordshire
OX25 5HD
UK

Enquiries:

info@everestbiotech.com

Sales:

sales@everestbiotech.com

Tech support:

support@everestbiotech.com

Tel: +44 (0)1869 238326

Fax: +44 (0)1869 238327

US Office

Everest Biotech c/o Abcore

405 Maple Street, Suite A106
Ramona,
CA 92065
USA

Inquiries:

info@everestbiotech.com

Sales:

usasales@everestbiotech.com

Tech support:

support@everestbiotech.com

Tel: 888-320-4628 (toll-free)

Fax: 888-841-9041

www.everestbiotech.com

**Research Use Only. Not for
diagnostic or therapeutic use.**

EB11784 - Goat Anti-ENC1 Antibody

Size: 100µg specific antibody in 200µl



Target Protein

Principal Names: CCL28, ectodermal-neural cortex (with BTB-like domain), ectodermal-neural cortex 1 (with BTB-like domain), ectoderm-neural cortex protein 1, ENC1, ENC-1, FLJ39259, kelch-like 35, kelch-like 37, kelch-like protein 37, KLHL35, KLHL37, NRPB, nuclear matrix protein NRP/B, nuclear restricted protein, BTB domain-like (brain), OTTHUMP00000128235, OTTHUMP00000222054, p53-induced gene 10 protein, PIG10, TP53I10, tumor protein p53 inducible protein 10

Official Symbol: ENC1

Accession Number(s): NP_003624.1; NP_001243505.1

Human GeneID(s): [8507](#)

Non-Human GeneID(s): 13803 (mouse), 294674 (rat)

Important Comments: This antibody is expected to recognize both reported isoforms (NP_003624.1; NP_001243505.1). Reported variants represent identical protein: NP_001243503.1, NP_001243504.1, NP_003624.1.

Immunogen

Peptide with sequence TSVSHDKLPKVQC, from the internal region of the protein sequence according to NP_003624.1; NP_001243505.1 .

Please note the [peptide](#) is available for sale.

Purification and Storage

Purified from goat serum by ammonium sulphate precipitation followed by antigen affinity chromatography using the immunizing peptide.

Supplied at 0.5 mg/ml in Tris saline, 0.02% sodium azide, pH7.3 with 0.5% bovine serum albumin.

Aliquot and store at -20°C. Minimize freezing and thawing.

Applications Tested

Peptide ELISA: antibody detection limit dilution 1:128000.

Western blot: Approx 70kDa band observed in Rat Ovary lysates (calculated MW of 66.1kDa according to Rat NP_001003401.1. Recommended concentration: 1-3µg/ml.

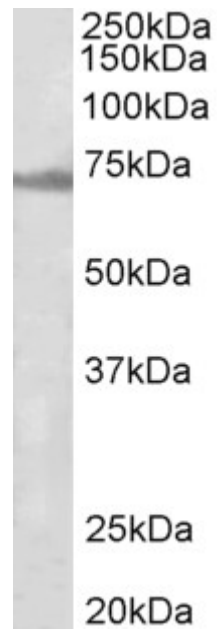
Primary incubation was 1 hour. Preliminary testing was unsuccessful on Mouse Brain for this particular batch.

IHC: Paraffin embedded Human Adrenal Gland. Recommended concentration: 5µg/ml.

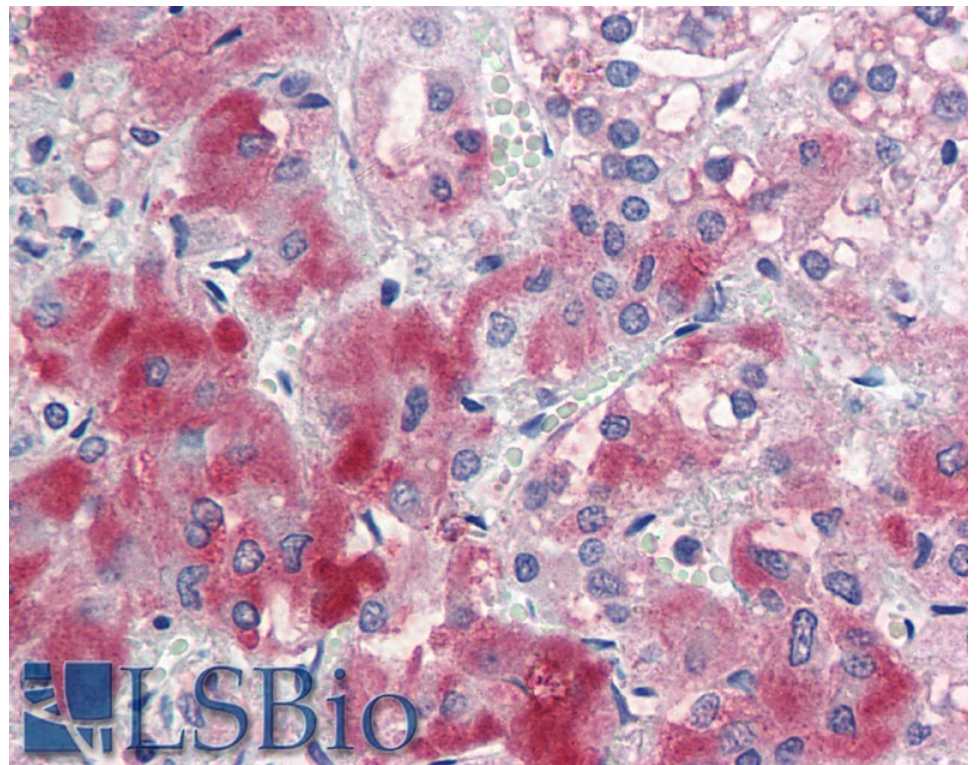
Species Reactivity

Tested: Rat, Human

Expected from sequence similarity: Human, Mouse, Rat, Dog, Pig, Cow



EB11784 (1 μ g/ml) staining of Rat Ovary lysate (35 μ g protein in RIPA buffer). Detected by chemiluminescence.



EB11784 (5 μ g/ml) staining of paraffin embedded Human Adrenal Gland. Steamed antigen retrieval with citrate buffer pH 6, AP-staining.