



# SZABO SCANDIC

Part of Europa Biosite

## Produktinformation



Forschungsprodukte & Biochemikalien



Zellkultur & Verbrauchsmaterial



Diagnostik & molekulare Diagnostik



Laborgeräte & Service

Weitere Information auf den folgenden Seiten!  
See the following pages for more information!



### Lieferung & Zahlungsart

siehe unsere [Liefer- und Versandbedingungen](#)

### Zuschläge

- Mindermengenzuschlag
- Trockeneiszuschlag
- Gefahrgutzuschlag
- Expressversand

### SZABO-SCANDIC HandelsgmbH

Quellenstraße 110, A-1100 Wien

T. +43(0)1 489 3961-0

F. +43(0)1 489 3961-7

[mail@szabo-scandic.com](mailto:mail@szabo-scandic.com)

[www.szabo-scandic.com](http://www.szabo-scandic.com)

[linkedin.com/company/szaboscandic](https://www.linkedin.com/company/szaboscandic) 



## UK Office

### Everest Biotech Ltd

Cherwell Innovation Centre  
77 Heyford Park  
Upper Heyford  
Oxfordshire  
OX25 5HD  
UK

Enquiries:

[info@everestbiotech.com](mailto:info@everestbiotech.com)

Sales:

[sales@everestbiotech.com](mailto:sales@everestbiotech.com)

Tech support:

[support@everestbiotech.com](mailto:support@everestbiotech.com)

Tel: +44 (0)1869 238326

Fax: +44 (0)1869 238327

## US Office

### Everest Biotech c/o Abcore

405 Maple Street, Suite A106  
Ramona,  
CA 92065  
USA

Inquiries:

[info@everestbiotech.com](mailto:info@everestbiotech.com)

Sales:

[usasales@everestbiotech.com](mailto:usasales@everestbiotech.com)

Tech support:

[support@everestbiotech.com](mailto:support@everestbiotech.com)

Tel: 888-320-4628 (toll-free)

Fax: 888-841-9041

[www.everestbiotech.com](http://www.everestbiotech.com)

**Research Use Only. Not for  
diagnostic or therapeutic use.**

## EB11824 - Goat Anti-cathepsin C / DPP1 (aa238-252) Antibody

Size: 100µg specific antibody in 200µl



### Target Protein

**Principal Names:** cathepsin C, cathepsin J, CPPI, CTSC, dipeptidyl peptidase 1, dipeptidyl peptidase I, dipeptidyl transferase, dipeptidyl-peptidase I, DPP1, DPPI, DPP-I, HMS, JP, JPD, OTTHUMP00000235623, OTTHUMP00000235624, OTTHUMP00000235625, OTTHUMP00000235627, PALS, PLS

**Official Symbol:** CTSC

**Accession Number(s):** NP\_001805.3

**Human GeneID(s):** [1075](#)

**Important Comments:** This antibody is expected to recognize isoform a (NP\_001805.3) only.

### Immunogen

Peptide with sequence C-RNVHGINFVSPVRNQ, from the internal region of the protein sequence according to NP\_001805.3.

Please note the [peptide](#) is available for sale.

### Purification and Storage

Purified from goat serum by ammonium sulphate precipitation followed by antigen affinity chromatography using the immunizing peptide.

Supplied at 0.5 mg/ml in Tris saline, 0.02% sodium azide, pH7.3 with 0.5% bovine serum albumin.

Aliquot and store at -20°C. Minimize freezing and thawing.

### Applications Tested

**Peptide ELISA:** antibody detection limit dilution 1:128000.

**Western blot:** Approx 24kDa band observed in Human Neutrophils lysates (calculated MW of 51.8kDa according to NP\_001805.3). This molecular weight is routinely observed by other sources. Recommended concentration: 1-3µg/ml. Primary incubation was 1 hour.

**IHC:** Paraffin embedded Human Lung and Kidney. Recommended concentration: 5µg/ml.

### Species Reactivity

**Tested:** Human

**Expected from sequence similarity:** Human

### Specific References

**This antibody has been successfully used in Western blot on Human:**

N'GUESSAN Koffi, SEREN Seda, DALLET-CHOISY Sandrine, MARCHAND-ADAM Sylvain, DASSE Sery Romualde, KORKMAZ Bric

Thérapeutique de la granulomatose avec polyangéite : nouvelle approche par inhibition de la cathepsine C des cellules CD34+

Rev int sc méd Abj -RISM-2019;21,1:32-38.

PMID: 0

**This antibody has been successfully used in Western blot on Human:**

Seren S et al

Consequences of cathepsin C inactivation for membrane exposure of proteinase 3, the target antigen in autoimmune vasculitis.

J Biol Chem. 2018 Aug 10;293(32):12415-12428.

PMID: 29925593

**This antibody has been successfully used in WB on Macaque:**

Hamon Y et al

Neutrophilic cathepsin C is matured by a multi-step proteolytic process and secreted by activated cells during inflammatory lung diseases.

J Biol Chem. 2016 Feb 16. pii: jbc.M115.707109

PMID: 26884336

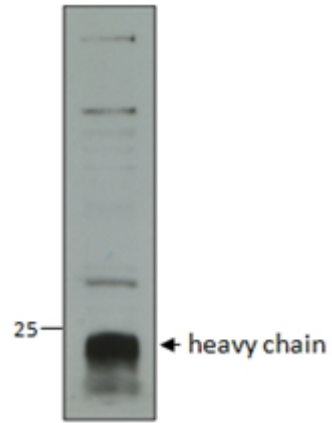
**This antibody has been successfully used in Western blot on Human:**

Hamon Y et al

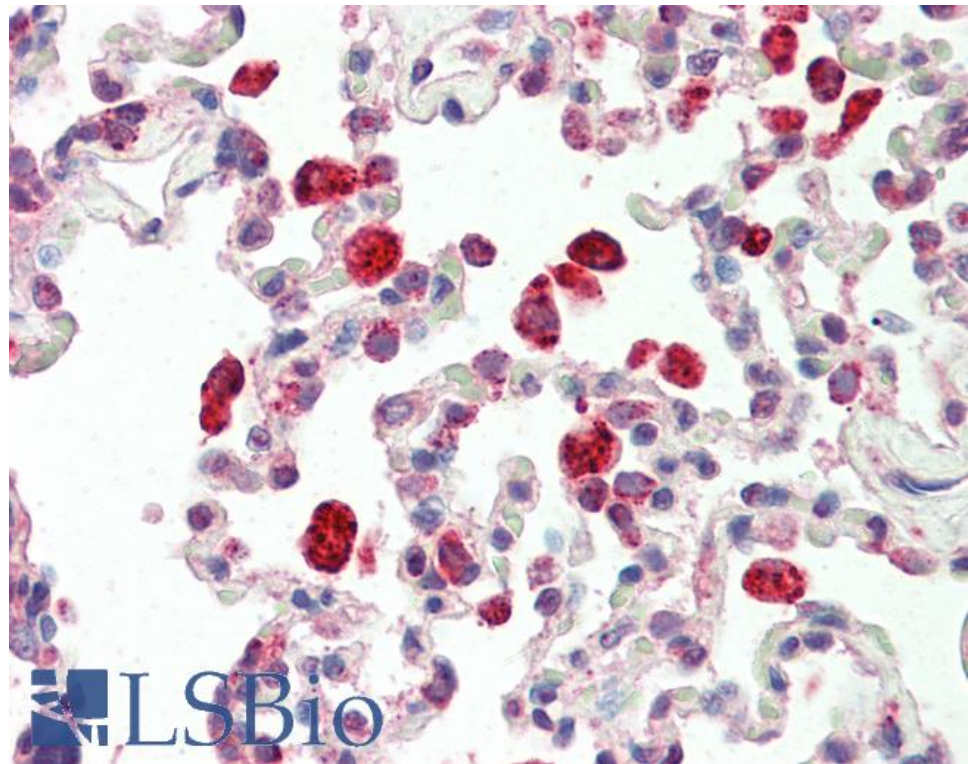
Analysis of urinary cathepsin C for diagnosing Papillon-Lefèvre syndrome.

FEBS J. 2016 Feb;283(3):498-509

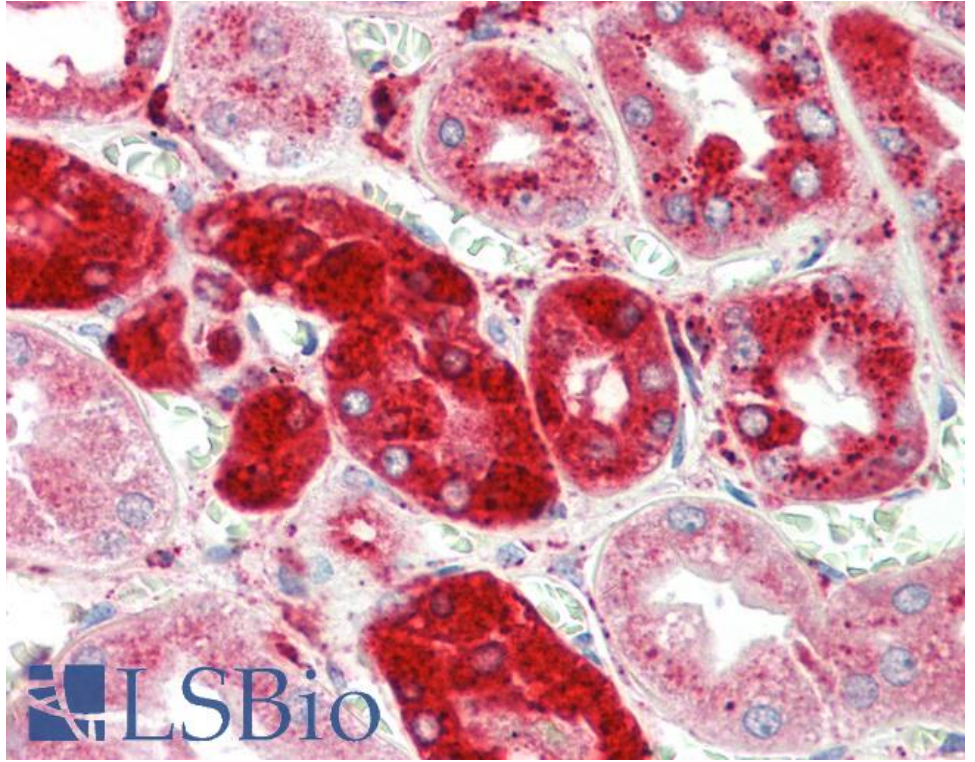
PMID: 26607765



EB11824 (1µg/ml) staining of Human Neutrophils lysate (35µg protein in RIPA buffer). Data obtained from a customer. Detected by chemiluminescence.



EB11824 (5µg/ml) staining of paraffin embedded Human Lung. Steamed antigen retrieval with citrate buffer pH 6, AP-staining.



EB11824 (5µg/ml) staining of paraffin embedded Human Kidney. Steamed antigen retrieval with citrate buffer pH 6, AP-staining.