



SZABO SCANDIC

Part of Europa Biosite

Produktinformation



Forschungsprodukte & Biochemikalien



Zellkultur & Verbrauchsmaterial



Diagnostik & molekulare Diagnostik



Laborgeräte & Service

Weitere Information auf den folgenden Seiten!
See the following pages for more information!



Lieferung & Zahlungsart

siehe unsere [Liefer- und Versandbedingungen](#)

Zuschläge

- Mindermengenzuschlag
- Trockeneiszuschlag
- Gefahrgutzuschlag
- Expressversand

SZABO-SCANDIC HandelsgmbH

Quellenstraße 110, A-1100 Wien

T. +43(0)1 489 3961-0

F. +43(0)1 489 3961-7

mail@szabo-scandic.com

www.szabo-scandic.com

[linkedin.com/company/szaboscandic](https://www.linkedin.com/company/szaboscandic) 



UK Office

Everest Biotech Ltd

Cherwell Innovation Centre
77 Heyford Park
Upper Heyford
Oxfordshire
OX25 5HD
UK

Enquiries:

info@everestbiotech.com

Sales:

sales@everestbiotech.com

Tech support:

support@everestbiotech.com

Tel: +44 (0)1869 238326

Fax: +44 (0)1869 238327

US Office

Everest Biotech c/o Abcore

405 Maple Street, Suite A106
Ramona,
CA 92065
USA

Inquiries:

info@everestbiotech.com

Sales:

usasales@everestbiotech.com

Tech support:

support@everestbiotech.com

Tel: 888-320-4628 (toll-free)

Fax: 888-841-9041

www.everestbiotech.com

**Research Use Only. Not for
diagnostic or therapeutic use.**

EB11828 - Goat Anti-Irs4 (mouse aa633-647) Antibody

Size: 100µg specific antibody in 200µl



Target Protein

Principal Names: insulin receptor substrate 4, Irs4, IRS-4, phosphoprotein of 160 kDa, pp160, RP23-415G1.3

Official Symbol: Irs4

Accession Number(s): NP_034702.2

Non-Human GeneID(s): 16370 (mouse), 315350 (rat)

Immunogen

Peptide with sequence C-DRGTKERKEAKEVRD, from the internal region of the protein sequence according to NP_034702.2.

Please note the [peptide](#) is available for sale.

Purification and Storage

Purified from goat serum by ammonium sulphate precipitation followed by antigen affinity chromatography using the immunizing peptide.

Supplied at 0.5 mg/ml in Tris saline, 0.02% sodium azide, pH7.3 with 0.5% bovine serum albumin.

Aliquot and store at -20°C. Minimize freezing and thawing.

Applications Tested

Peptide ELISA: antibody detection limit dilution 1:128000.

Western blot: Approx 150kDa band observed in Mouse Heart lysates (calculated MW of 130kDa according to NP_034702.2). The observed molecular weight corresponds to earlier findings in literature with different antibodies (Schreyer et al, *JEndocrinology*. 2003 Apr;144(4):1211-8. PMID: 12639902). Recommended concentration: 0.2-0.6µg/ml.

Primary incubation was 1 hour. An additional band of unknown identity was also consistently observed at ~39kDa. This band was successfully blocked by incubation with the immunizing peptide. This product has been successfully used in WB on Mouse: Ikink GJ et al, *Nat Commun*. 2016 Nov 23;7:13567. PMID: 27876799.

Immunofluorescence: This product has been successfully used in IF on Mouse: Harriet M Jackson et al, *BMC Genomics*. 2013 Nov 25;14:831. PMID: 24274089.

Species Reactivity

Tested: Mouse

Expected from sequence similarity: Mouse, Rat

Specific References

This antibody has been successfully used in Western blot on Mouse:

Ikink GJ, Boer M, Bakker ER, Hilken J

IRS4 induces mammary tumorigenesis and confers resistance to HER2-targeted therapy through constitutive PI3K/AKT-pathway hyperactivation

Nat Commun. 2016 Nov 23;7:13567

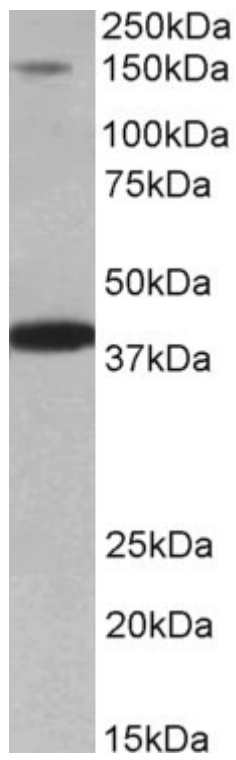
PMID: 27876799

This antibody has been successfully used in IF on Mouse:

Harriet M Jackson, Ileana Soto, Leah C Graham, Gregory W Carter and Gareth R Howel.

Clustering of transcriptional profiles identifies changes to insulin signaling as an early event in a mouse model of Alzheimer's disease

BMC Genomics. 2013 Nov 25;14:831.
PMID: 24274089



EB11828 (0.2 μ g/ml) staining of Mouse Heart lysate (35 μ g protein in RIPA buffer). Detected by chemiluminescence.