



# SZABO SCANDIC

Part of Europa Biosite

## Produktinformation



Forschungsprodukte & Biochemikalien



Zellkultur & Verbrauchsmaterial



Diagnostik & molekulare Diagnostik



Laborgeräte & Service

Weitere Information auf den folgenden Seiten!  
See the following pages for more information!



### Lieferung & Zahlungsart

siehe unsere [Liefer- und Versandbedingungen](#)

### Zuschläge

- Mindermengenzuschlag
- Trockeneiszuschlag
- Gefahrgutzuschlag
- Expressversand

### SZABO-SCANDIC HandelsgmbH

Quellenstraße 110, A-1100 Wien

T. +43(0)1 489 3961-0

F. +43(0)1 489 3961-7

[mail@szabo-scandic.com](mailto:mail@szabo-scandic.com)

[www.szabo-scandic.com](http://www.szabo-scandic.com)

[linkedin.com/company/szaboscandic](https://www.linkedin.com/company/szaboscandic) 

## UK Office

### Everest Biotech Ltd

Cherwell Innovation Centre  
77 Heyford Park  
Upper Heyford  
Oxfordshire  
OX25 5HD  
UK

Enquiries:

[info@everestbiotech.com](mailto:info@everestbiotech.com)

Sales:

[sales@everestbiotech.com](mailto:sales@everestbiotech.com)

Tech support:

[support@everestbiotech.com](mailto:support@everestbiotech.com)

Tel: +44 (0)1869 238326

Fax: +44 (0)1869 238327

## US Office

### Everest Biotech c/o Abcore

405 Maple Street, Suite A106  
Ramona,  
CA 92065  
USA

Inquiries:

[info@everestbiotech.com](mailto:info@everestbiotech.com)

Sales:

[usasales@everestbiotech.com](mailto:usasales@everestbiotech.com)

Tech support:

[support@everestbiotech.com](mailto:support@everestbiotech.com)

Tel: 888-320-4628 (toll-free)

Fax: 888-841-9041

[www.everestbiotech.com](http://www.everestbiotech.com)

**Research Use Only. Not for  
diagnostic or therapeutic use.**

## EB11838 - Goat Anti-betaCstF-64 variant 1/ betaCstF-64 variant 3 (mouse) Antibody

Size: 100µg specific antibody in 200µl



### Target Protein

**Principal Names:** 64kDa, alphaCstF-64 variant 4, betaCstF-64 variant 1, betaCstF-64 variant 3, C630034J23Rik, CF-1 64 kDa subunit, cleavage stimulation factor 64 kDa subunit, cleavage stimulation factor subunit 2, cleavage stimulation factor, 3' pre-RNA subunit 2, cleavage stimulation factor, 3' pre-RNA subunit 2, 64 kDa, CSTF 64 kDa subunit, Cstf2, Cstf64, cstF-64

**Official Symbol:** Cstf2

**Accession Number(s):** ACF05702.1; ACF05700.1

**Non-Human GeneID(s):** 108062 (mouse)

**Important Comments:** This antibody recognizes mouse variants 1 and 3 of the reported beta isoform (ACF05702.1; ACF05700.1).

### Immunogen

Peptide with sequence C-PASIERVQQGRT, from the internal region of the protein sequence according to ACF05702.1; ACF05700.1.

Please note the [peptide](#) is available for sale.

### Purification and Storage

Purified from goat serum by ammonium sulphate precipitation followed by antigen affinity chromatography using the immunizing peptide.

Supplied at 0.5 mg/ml in Tris saline, 0.02% sodium azide, pH7.3 with 0.5% bovine serum albumin.

Aliquot and store at -20°C. Minimize freezing and thawing.

### Applications Tested

**Peptide ELISA:** antibody detection limit dilution 1:128000.

**Western blot: Immunoprecipitation:** In transfected HeLa transiently expressing Mouse  $\beta$ Cstf-64 ((DYKDDDDK tagged), a band of approx. 80kDa was observed using anti-DYKDDDDK antibody in Western blot after immunoprecipitation with EB11838. No bands were observed in mock-transfected HeLa. Yields were similar between RIPA buffer and Triton X-100 buffer conditions. Recommended amount, 2ug per lysate.

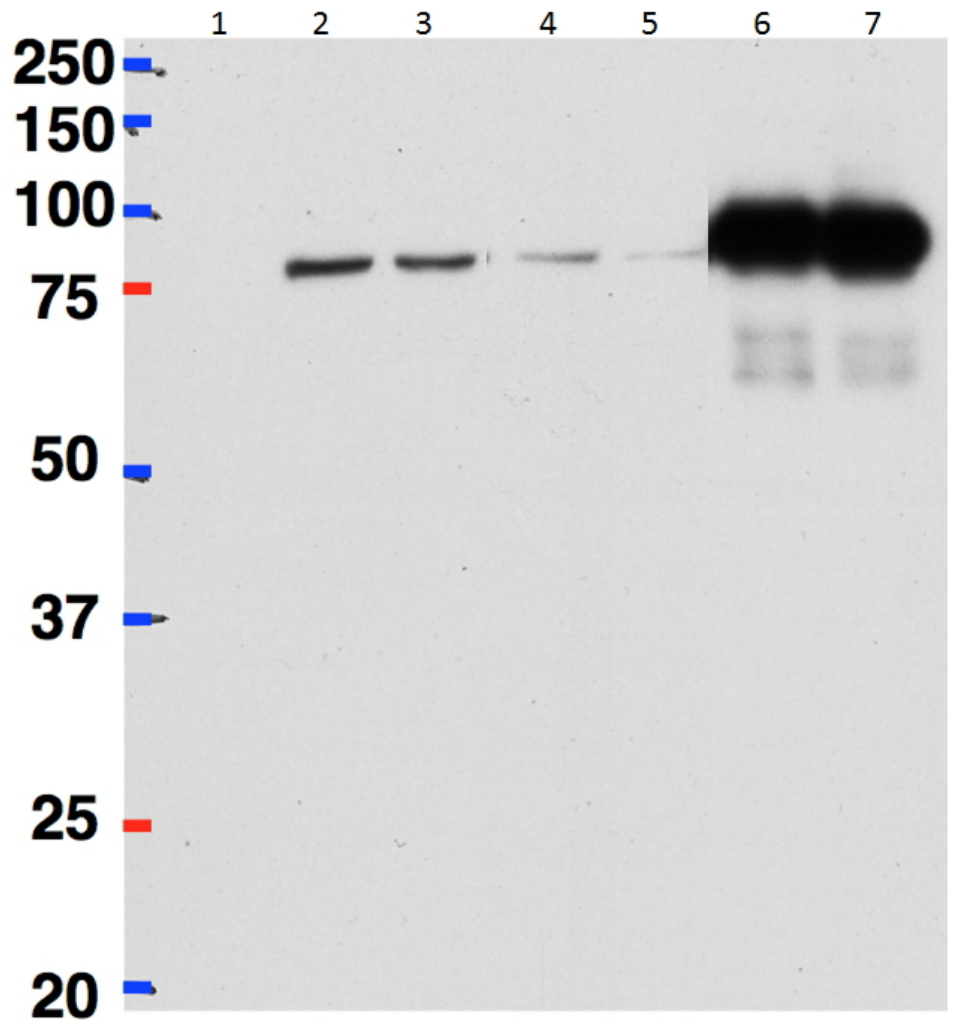
**Immunoprecipitation:** An approx 75kDa band is observed when endogenously expressed  $\beta$ Cstf-64 is pulled down from Mouse Brain lysates using EB11838, while Cstf-64 which is endogenously expressed in Mouse Liver, is not pulled down. Western blot was probed with a mouse monoclonal antibody recognizing both  $\beta$ Cstf-64 and Cstf-64. Recommended amount 2ug EB11838/500ug lysate protein.

**IHC:** Paraffin embedded Human Tonsil. Recommended concentration: 5µg/ml.

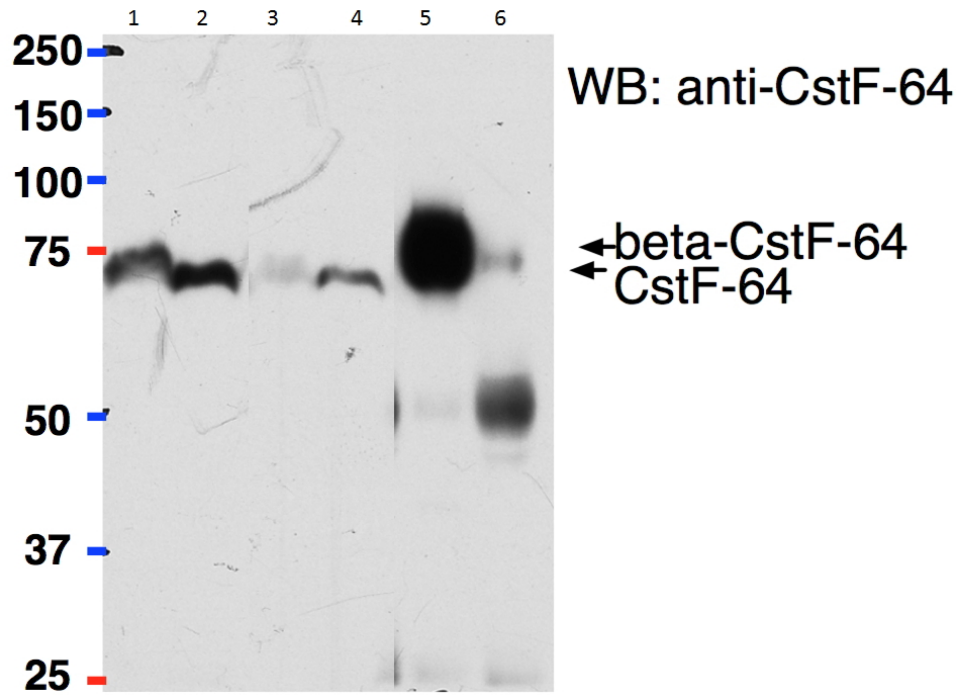
### Species Reactivity

**Tested:** Human, Mouse

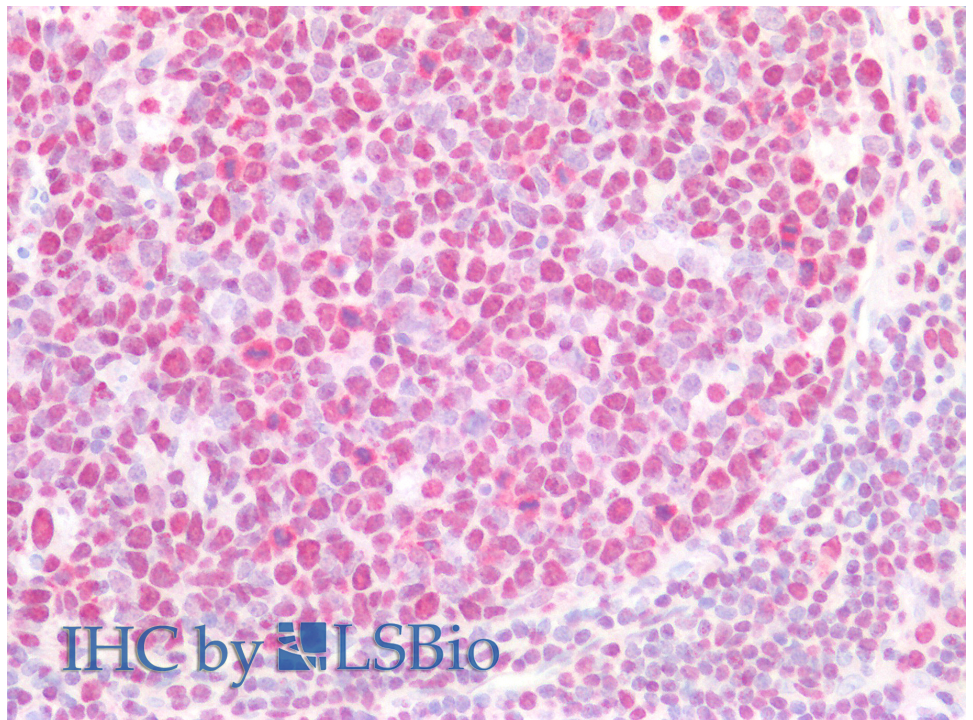
**Expected from sequence similarity:** Mouse



HeLa lysate either in RIPA buffer (lanes 1, 2, 4, 6) or TX100 buffer (lanes 3, 5, 7) overexpressing Mouse  $\beta$ Cstf-64 (DYKDDDDK tagged) immunoprecipitated using EB11838 (2ug) with Protein G-coated magnetic beads in lanes 6 and 7 and probed with anti-DYKDDDDK (1/1000). Mock-transfected HeLa in Lane 1. A 1/40th part of the lysate was loaded in lanes 2 and 3 before IP and in lanes 4 and 5 after IP. Primary incubations were for 1 hour. Detected by chemiluminescence. Data obtained from Dr P Grozdanov, Texas Tech University Health Sciences Center, USA.



EB11838 (2ug) used to pull down  $\beta$ Cstf-64 from Mouse Brain (lane 5) lysate (500ug protein) while it cannot pull down Cstf-64 from Mouse Liver (lane 6) lysate (500ug protein) using Protein G-coated magnetic beads. A 1/40th part of the lysates were loaded in lanes 1 (Brain) and 2 (Liver) before IP and in lanes 3 (Brain) and 4 (Liver) after IP. Western blot probed with mouse anti- $\beta$ Cstf-64/Cstf-64 antibody and detected by chemiluminescence. Data obtained from Dr P Grozdanov, Texas Tech University Health Sciences Center, USA.



EB11838 (5 $\mu$ g/ml) staining of paraffin embedded Human Tonsil. Steamed antigen retrieval with citrate buffer pH 6, AP-staining.