



SZABO SCANDIC

Part of Europa Biosite

Produktinformation



Forschungsprodukte & Biochemikalien



Zellkultur & Verbrauchsmaterial



Diagnostik & molekulare Diagnostik



Laborgeräte & Service

Weitere Information auf den folgenden Seiten!
See the following pages for more information!



Lieferung & Zahlungsart

siehe unsere [Liefer- und Versandbedingungen](#)

Zuschläge

- Mindermengenzuschlag
- Trockeneiszuschlag
- Gefahrgutzuschlag
- Expressversand

SZABO-SCANDIC HandelsgmbH

Quellenstraße 110, A-1100 Wien

T. +43(0)1 489 3961-0

F. +43(0)1 489 3961-7

mail@szabo-scandic.com

www.szabo-scandic.com

[linkedin.com/company/szaboscandic](https://www.linkedin.com/company/szaboscandic) 



UK Office

Everest Biotech Ltd

Cherwell Innovation Centre
77 Heyford Park
Upper Heyford
Oxfordshire
OX25 5HD
UK

Enquiries:

info@everestbiotech.com

Sales:

sales@everestbiotech.com

Tech support:

support@everestbiotech.com

Tel: +44 (0)1869 238326

Fax: +44 (0)1869 238327

US Office

Everest Biotech c/o Abcore

405 Maple Street, Suite A106
Ramona,
CA 92065
USA

Inquiries:

info@everestbiotech.com

Sales:

usasales@everestbiotech.com

Tech support:

support@everestbiotech.com

Tel: 888-320-4628 (toll-free)

Fax: 888-841-9041

www.everestbiotech.com

**Research Use Only. Not for
diagnostic or therapeutic use.**

EB11861 - Goat Anti-SLC6A12 / BGT1 Antibody

Size: 100µg specific antibody in 200µl



Target Protein

Principal Names: BGT1, BGT-1, FLJ38727, gamma-aminobutyric acid transporter, GAT2, Na(+)/Cl(-) betaine/GABA transporter, OTTHUMP00000115358, OTTHUMP00000237543, OTTHUMP00000237583, SLC6A12, sodium- and chloride-dependent betaine transporter, solute carrier family 6 (neurotransmitter transporter, betaine/GABA), member 12

Official Symbol: SLC6A12

Accession Number(s): NP_003035.3

Human GeneID(s): [6539](#)

Important Comments: Reported variants represent identical protein: NP_001193860.1, NP_003035.3, NP_001116319.1, NP_001116320.1.

Immunogen

Peptide with sequence CLDGSAGRNFGPSPT, from the C Terminus of the protein sequence according to NP_003035.3.

Please note the [peptide](#) is available for sale.

Purification and Storage

Purified from goat serum by ammonium sulphate precipitation followed by antigen affinity chromatography using the immunizing peptide.

Supplied at 0.5 mg/ml in Tris saline, 0.02% sodium azide, pH7.3 with 0.5% bovine serum albumin.

Aliquot and store at -20°C. Minimize freezing and thawing.

Applications Tested

Peptide ELISA: antibody detection limit dilution 1:128000.

Western blot: Approx 70kDa band observed in Human Brain lysates from several regions (calculated MW of 69.4kDa according to NP_003035.3). Recommended concentration: 1-3µg/ml. An additional band of unknown identity was also consistently observed at 27kDa. This band was successfully blocked by incubation with the immunizing peptide.

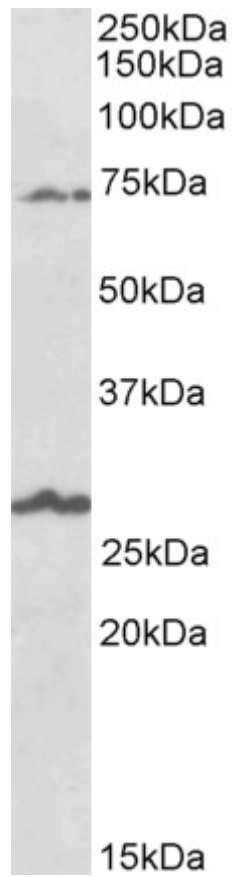
Primary incubation was 1 hour.

IHC: Paraffin embedded Human Liver. Recommended concentration: 10µg/ml.

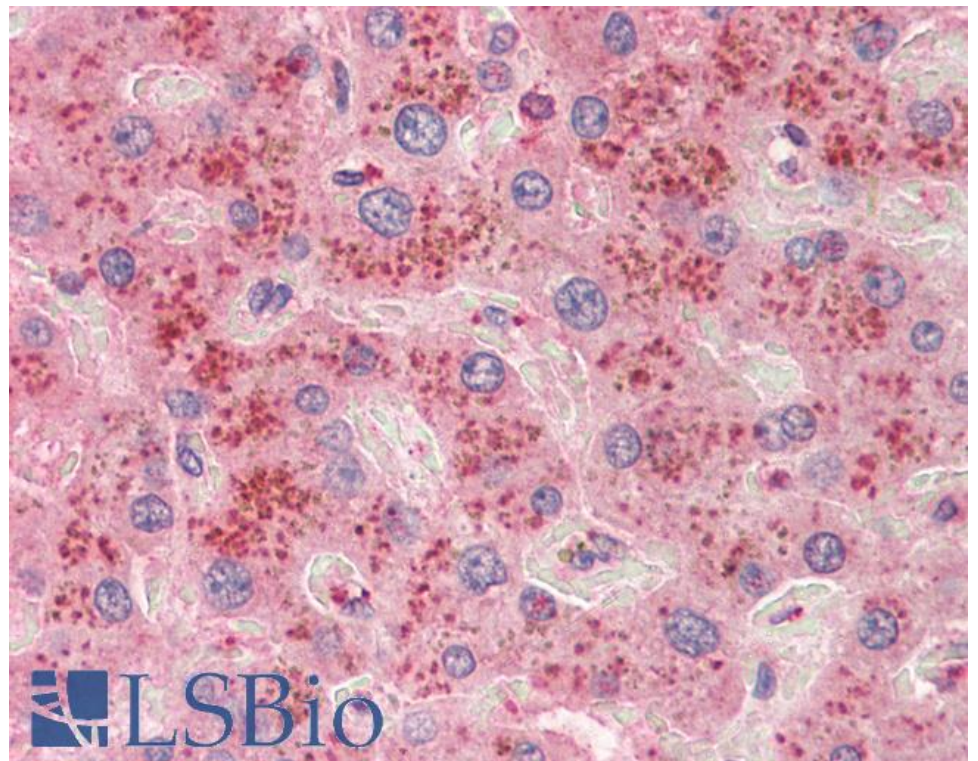
Species Reactivity

Tested: Human

Expected from sequence similarity: Human



EB11861 (1µg/ml) staining of Human Olfactory bulb lysate (35µg protein in RIPA buffer). Detected by chemiluminescence.



EB11861 (10µg/ml) staining of paraffin embedded Human Liver. Steamed antigen retrieval with citrate buffer pH 6, AP-staining.