



# SZABO SCANDIC

Part of Europa Biosite

## Produktinformation



Forschungsprodukte & Biochemikalien



Zellkultur & Verbrauchsmaterial



Diagnostik & molekulare Diagnostik



Laborgeräte & Service

Weitere Information auf den folgenden Seiten!  
See the following pages for more information!



### Lieferung & Zahlungsart

siehe unsere [Liefer- und Versandbedingungen](#)

### Zuschläge

- Mindermengenzuschlag
- Trockeneiszuschlag
- Gefahrgutzuschlag
- Expressversand

### SZABO-SCANDIC HandelsgmbH

Quellenstraße 110, A-1100 Wien

T. +43(0)1 489 3961-0

F. +43(0)1 489 3961-7

[mail@szabo-scandic.com](mailto:mail@szabo-scandic.com)

[www.szabo-scandic.com](http://www.szabo-scandic.com)

[linkedin.com/company/szaboscandic](https://www.linkedin.com/company/szaboscandic) 



## UK Office

### Everest Biotech Ltd

Cherwell Innovation Centre  
77 Heyford Park  
Upper Heyford  
Oxfordshire  
OX25 5HD  
UK

Enquiries:

[info@everestbiotech.com](mailto:info@everestbiotech.com)

Sales:

[sales@everestbiotech.com](mailto:sales@everestbiotech.com)

Tech support:

[support@everestbiotech.com](mailto:support@everestbiotech.com)

Tel: +44 (0)1869 238326

Fax: +44 (0)1869 238327

## US Office

### Everest Biotech c/o Abcore

405 Maple Street, Suite A106  
Ramona,  
CA 92065  
USA

Inquiries:

[info@everestbiotech.com](mailto:info@everestbiotech.com)

Sales:

[usasales@everestbiotech.com](mailto:usasales@everestbiotech.com)

Tech support:

[support@everestbiotech.com](mailto:support@everestbiotech.com)

Tel: 888-320-4628 (toll-free)

Fax: 888-841-9041

[www.everestbiotech.com](http://www.everestbiotech.com)

**Research Use Only. Not for  
diagnostic or therapeutic use.**

## EB11875-B - Goat Anti-AP2A1 (aa706-727), Biotinlyated Antibody

Size: 100µg specific antibody in 200µl



### Target Protein

**Principal Names:** AP2A1, adaptor related protein complex 2 alpha 1 subunit, ADTAA, AP2-ALPHA, CLAPA1, 100 kDa coated vesicle protein A, adapter-related protein complex 2 alpha-1 subunit, adapter-related protein complex 2 subunit alpha-1, adaptin, alpha A, adaptor protein complex AP-2 subunit alpha-1, adaptor related protein complex 2, alpha 1 subunit, adaptor-related protein complex 2 subunit alpha-1, adaptor-related protein complex 2, alpha 1 subunit, alpha-adaptin A, alpha1-adaptin, clathrin assembly protein complex 2 alpha-A large chain, clathrin-associated/assembly/adaptor protein, large, alpha 1, plasma membrane adaptor HA2/AP2 adaptin alpha A subunit

**Official Symbol:** AP2A1

**Accession Number(s):** NP\_055018.2

**Human GeneID(s):** [160](#)

**Important Comments:** This antibody is expected to recognize reported isoform 1 (NP\_055018.2) only.

### Immunogen

Peptide with sequence CELEPPAPESPMALLADPAPAAD., from the internal region of the protein sequence according to NP\_055018.2.

Please note the [peptide](#) is available for sale.

### Purification and Storage

Purified from goat serum by ammonium sulphate precipitation followed by antigen affinity chromatography using the immunizing peptide.

Supplied at 0.5 mg/ml in Tris saline, 0.02% sodium azide, pH7.3 with 0.5% bovine serum albumin.

Aliquot and store at -20°C. Minimize freezing and thawing.

### Applications Tested

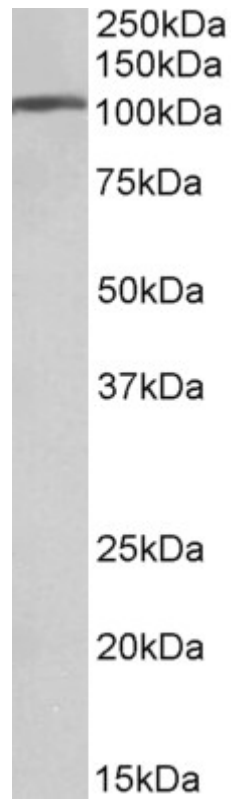
**Peptide ELISA:** antibody detection limit dilution 1:128000.

**Western blot:** Approx 110kDa band observed in Human Brain (Frontal Cortex) lysates (calculated MW of 108kDa according to NP\_055018.2). The same band is observed in Mouse Brain, but not in Mouse Liver or Mouse Kidney lysates. See non-biotinylated parental product's datasheet for further QC data. Recommended concentration: 0.01-0.03µg/ml.

### Species Reactivity

**Tested:** Human, Mouse

**Expected from sequence similarity:** Human, Mouse, Rat, Pig, Cow



Biotinylated EB11875 (0.01 $\mu$ g/ml) staining of Human Frontal Cortex lysate (35 $\mu$ g protein in RIPA buffer). Primary incubation was 1 hour. Detected by chemiluminescence.