



# SZABO SCANDIC

Part of Europa Biosite

## Produktinformation



Forschungsprodukte & Biochemikalien



Zellkultur & Verbrauchsmaterial



Diagnostik & molekulare Diagnostik



Laborgeräte & Service

Weitere Information auf den folgenden Seiten!  
See the following pages for more information!



### Lieferung & Zahlungsart

siehe unsere [Liefer- und Versandbedingungen](#)

### Zuschläge

- Mindermengenzuschlag
- Trockeneiszuschlag
- Gefahrgutzuschlag
- Expressversand

### SZABO-SCANDIC HandelsgmbH

Quellenstraße 110, A-1100 Wien

T. +43(0)1 489 3961-0

F. +43(0)1 489 3961-7

[mail@szabo-scandic.com](mailto:mail@szabo-scandic.com)

[www.szabo-scandic.com](http://www.szabo-scandic.com)

[linkedin.com/company/szaboscandic](https://www.linkedin.com/company/szaboscandic) 

## UK Office

### Everest Biotech Ltd

Cherwell Innovation Centre  
77 Heyford Park  
Upper Heyford  
Oxfordshire  
OX25 5HD  
UK

Enquiries:

[info@everestbiotech.com](mailto:info@everestbiotech.com)

Sales:

[sales@everestbiotech.com](mailto:sales@everestbiotech.com)

Tech support:

[support@everestbiotech.com](mailto:support@everestbiotech.com)

Tel: +44 (0)1869 238326

Fax: +44 (0)1869 238327

## US Office

### Everest Biotech c/o Abcore

405 Maple Street, Suite A106  
Ramona,  
CA 92065  
USA

Inquiries:

[info@everestbiotech.com](mailto:info@everestbiotech.com)

Sales:

[usasales@everestbiotech.com](mailto:usasales@everestbiotech.com)

Tech support:

[support@everestbiotech.com](mailto:support@everestbiotech.com)

Tel: 888-320-4628 (toll-free)

Fax: 888-841-9041

[www.everestbiotech.com](http://www.everestbiotech.com)

**Research Use Only. Not for  
diagnostic or therapeutic use.**

## EB11875 - Goat Anti-AP2A1 (aa706-727) Antibody

Size: 100µg specific antibody in 200µl



### Target Protein

**Principal Names:** AP2A1, adaptor-related protein complex 2, alpha 1 subunit, ADTAA, AP2-ALPHA, CLAPA1, 100 kDa coated vesicle protein A, AP-2 complex subunit alpha-1, adapter-related protein complex 2 alpha-1 subunit, adaptin, alpha A, adaptor protein complex AP-2 subunit alpha-1, alpha-adaptin A, alpha1-adaptin, clathrin assembly protein complex 2 alpha-A large chain, clathrin-associated/assembly/adaptor protein, large, alpha 1, plasma membrane adaptor HA2/AP2 adaptin alpha A subunit

**Official Symbol:** AP2A1

**Accession Number(s):** NP\_055018.2

**Human GeneID(s):** [160](#)

**Non-Human GeneID(s):** 11771 (mouse), 308578 (rat)

**Important Comments:** This antibody is expected to recognize reported isoform 1 (NP\_055018.2) only.

### Immunogen

Peptide with sequence C-ELEPPAPESPMALLADPAPAAD, from the internal region of the protein sequence according to NP\_055018.2.

Please note the [peptide](#) is available for sale.

### Purification and Storage

Purified from goat serum by ammonium sulphate precipitation followed by antigen affinity chromatography using the immunizing peptide.

Supplied at 0.5 mg/ml in Tris saline, 0.02% sodium azide, pH7.3 with 0.5% bovine serum albumin.

Aliquot and store at -20°C. Minimize freezing and thawing.

### Applications Tested

**Peptide ELISA:** antibody detection limit dilution 1:128000.

**Western blot:** Approx 110kDa band observed in Human Brain (Frontal cortex) lysates (calculated MW of 108kDa according to NP\_055018.2). Recommended concentration: 0.03-0.1µg/ml. Primary incubation was 1 hour.

### Species Reactivity

**Tested:** Human

**Expected from sequence similarity:** Human, Mouse, Rat, Pig, Cow

### Specific References

**This antibody (previous batch) has been successfully used in IF on Human:**

Dominik P Buser, Gaétan Bader, Martin Spiess

Retrograde transport of CDMPR depends on several machineries as analyzed by sulfatable nanobodies.

Life Sci Alliance. 2022 Jul; 5(7): e202101269.

PMID: 35314489

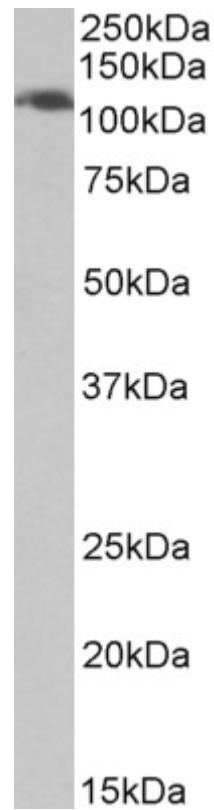
**This antibody (previous batch) has been successfully used in Western blot on**

**Human:**

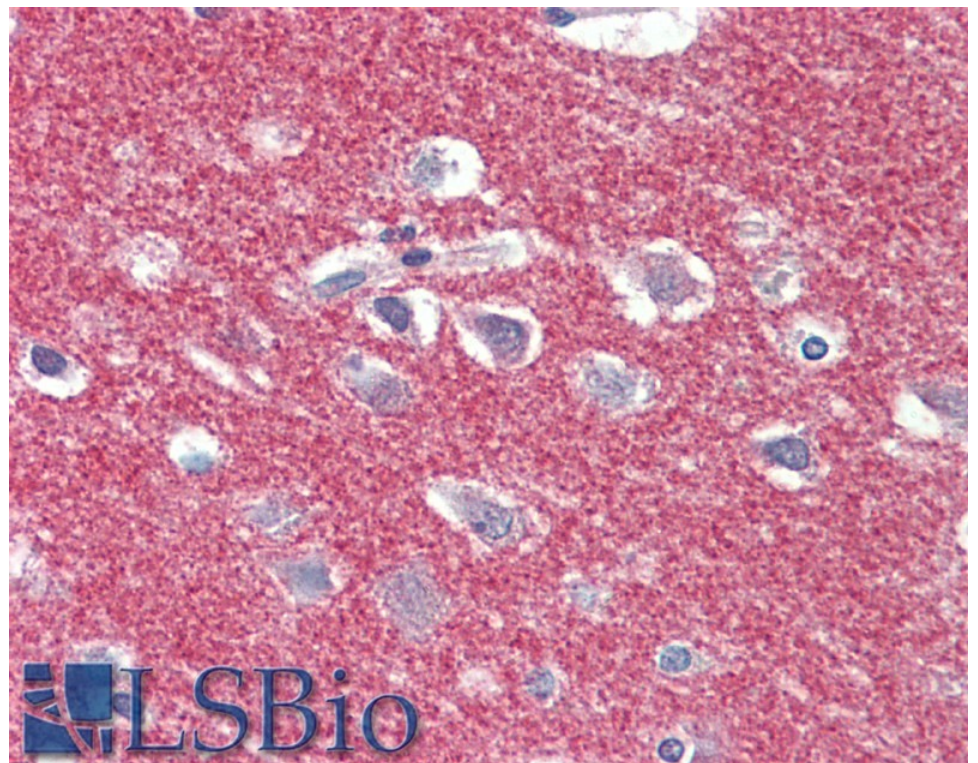
Dominik Pascal Buser, Marie-Françoise Ritz, Suzette Moes; Cristobal Tostado, Stephan Frank, Martin Spiess, Luigi Mariani, Paul Jenö, Jean-Louis Boulay, Gregor Hutter

Quantitative proteomics reveals reduction of endocytic machinery components in gliomas

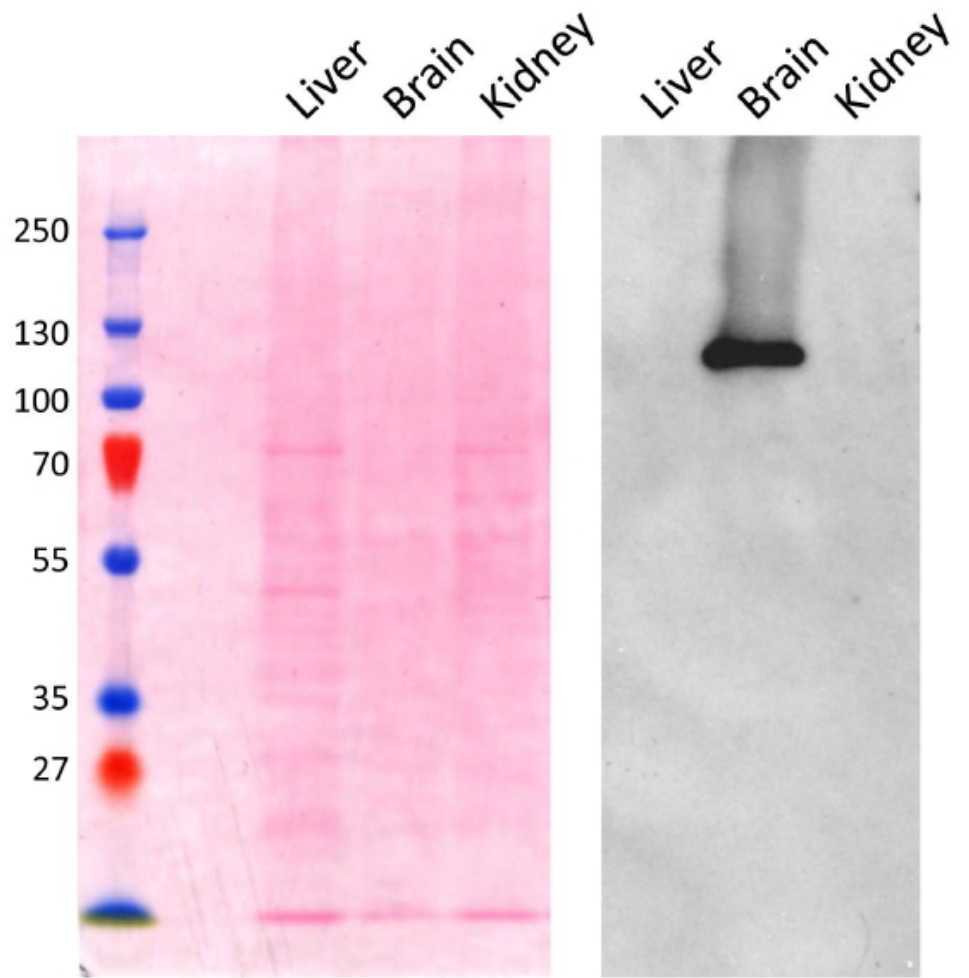
<https://doi.org/10.1016/j.ebiom.2019.07.039>  
PMID: 31331834



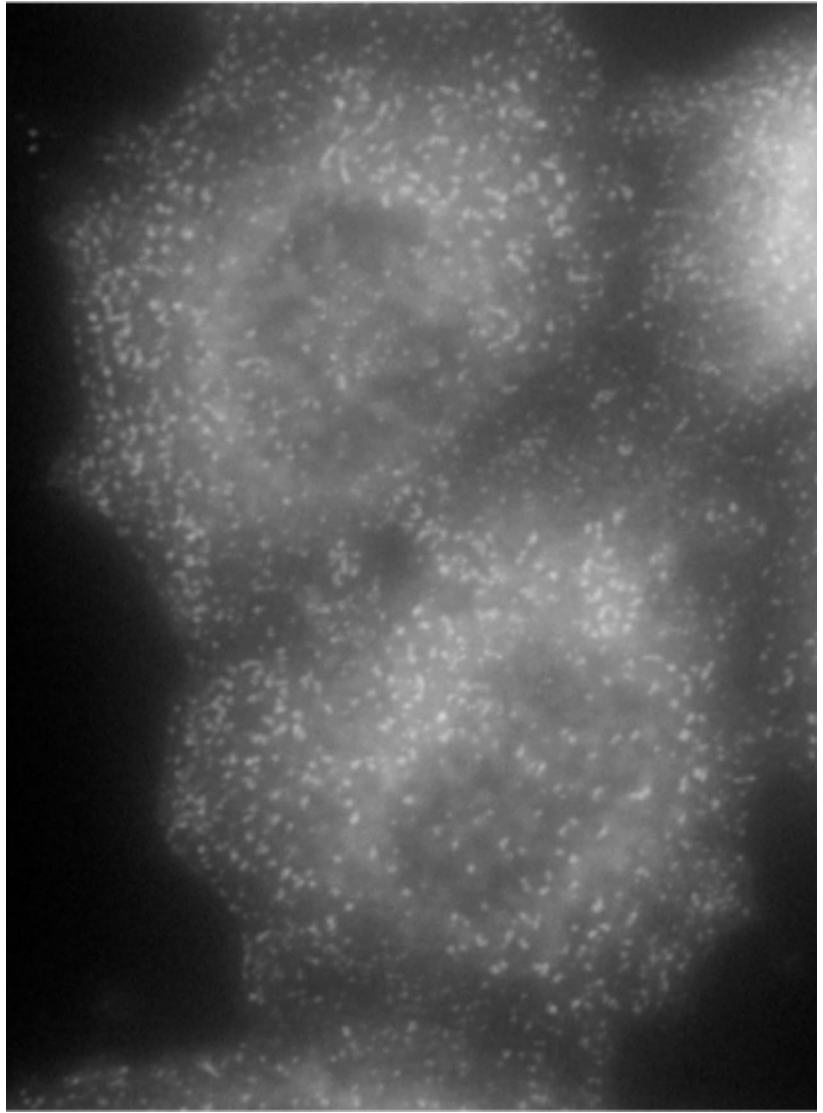
EB11875 (0.03 $\mu$ g/ml) staining of Human Frontal cortex lysate (35 $\mu$ g protein in RIPA buffer). Detected by chemiluminescence.



EB11875 (5 $\mu$ g/ml) staining of paraffin embedded Human Cortex. Steamed antigen retrieval with citrate buffer pH 6, AP-staining. **This data is from a previous batch, not on sale.**



EB11875 (0.1 $\mu$ g/ml) staining of Mouse Brain lysate (~5 $\mu$ g protein in SDSPAGE buffer). The left panel shows the same blot stained with Ponceau red for total protein stain as the loading control before labelling. Primary incubation was 1 hour. Detected by chemiluminescence. Data obtained from Prof. M Robinson, CIMR, Cambridge, UK. **This data is from a previous batch, not on sale.**



EB11875 (0.1  $\mu\text{g/ml}$ ) staining of methanol-fixed HeLa cells with stably expressing Mouse Ap2a1. Primary incubation was 1 hour. Detected by Alexa Fluor 594. Data obtained from Prof. M Robinson, CIMR, Cambridge, UK. **This data is from a previous batch, not on sale.**