



SZABO SCANDIC

Part of Europa Biosite

Produktinformation



Forschungsprodukte & Biochemikalien



Zellkultur & Verbrauchsmaterial



Diagnostik & molekulare Diagnostik



Laborgeräte & Service

Weitere Information auf den folgenden Seiten!
See the following pages for more information!



Lieferung & Zahlungsart

siehe unsere [Liefer- und Versandbedingungen](#)

Zuschläge

- Mindermengenzuschlag
- Trockeneiszuschlag
- Gefahrgutzuschlag
- Expressversand

SZABO-SCANDIC HandelsgmbH

Quellenstraße 110, A-1100 Wien

T. +43(0)1 489 3961-0

F. +43(0)1 489 3961-7

mail@szabo-scandic.com

www.szabo-scandic.com

[linkedin.com/company/szaboscandic](https://www.linkedin.com/company/szaboscandic) 



EB11885 - Goat Anti-perilipin 3 / TIP47 (aa154-167) Antibody



Size: 100µg specific antibody in 200µl

UK Office

Everest Biotech Ltd

Cherwell Innovation Centre
77 Heyford Park
Upper Heyford
Oxfordshire
OX25 5HD
UK

Enquiries:

info@everestbiotech.com

Sales:

sales@everestbiotech.com

Tech support:

support@everestbiotech.com

Tel: +44 (0)1869 238326

Fax: +44 (0)1869 238327

US Office

Everest Biotech c/o Abcore

405 Maple Street, Suite A106
Ramona,
CA 92065
USA

Inquiries:

info@everestbiotech.com

Sales:

usasales@everestbiotech.com

Tech support:

support@everestbiotech.com

Tel: 888-320-4628 (toll-free)

Fax: 888-841-9041

www.everestbiotech.com

**Research Use Only. Not for
diagnostic or therapeutic use.**

Target Protein

Principal Names: PLIN3, perilipin 3, M6PRBP1, MGC11117, MGC2012, PP17, TIP47, 47 kDa MPR-binding protein, cargo selection protein TIP47, mannose-6-phosphate receptor-binding protein 1, perilipin-3, placental protein 17, tail-interacting protein, 47 kD

Official Symbol: PLIN3

Accession Number(s): NP_005808.3; NP_001157661.1; NP_001157666.1

Human GeneID(s): [10226](#)

Important Comments: This antibody is expected to recognize all reported isoforms (NP_005808.3; NP_001157661.1; NP_001157666.1).

Immunogen

Peptide with sequence C-TRGAVQSGVDKTKS, from the internal region of the protein sequence according to NP_005808.3; NP_001157661.1; NP_001157666.1.

Please note the [peptide](#) is available for sale.

Purification and Storage

Purified from goat serum by ammonium sulphate precipitation followed by antigen affinity chromatography using the immunizing peptide.

Supplied at 0.5 mg/ml in Tris saline, 0.02% sodium azide, pH7.3 with 0.5% bovine serum albumin.

Aliquot and store at -20°C. Minimize freezing and thawing.

Applications Tested

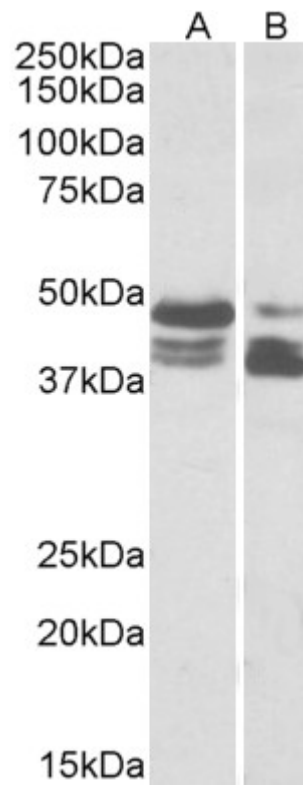
Peptide ELISA: antibody detection limit dilution 1:128000.

Western blot: Approx 48kDa+45kDa double bands observed in lysates of cell line HeLa and of Human Colon cancer (calculated MW of 47.1kDa according to NP_NP_005808.3, 46.9kDa according to NP_001157661.1 and 45.8kDa according to NP_001157666.1). The observed bands represent the three different isoforms. Please note the difference in band pattern intensities between HeLa and Colon cancer lysates. Recommended concentration: 0.03-0.1µg/ml.

Species Reactivity

Tested: Human

Expected from sequence similarity: Human



EB11885 (0.03 μ g/ml) staining of HeLa (lane 1) and Human Colon cancer (lane two) lysate (35 μ g protein in RIPA buffer). Primary incubation was 1 hour. Detected by chemiluminescence.