



# SZABO SCANDIC

Part of Europa Biosite

## Produktinformation



Forschungsprodukte & Biochemikalien



Zellkultur & Verbrauchsmaterial



Diagnostik & molekulare Diagnostik



Laborgeräte & Service

Weitere Information auf den folgenden Seiten!  
See the following pages for more information!



### Lieferung & Zahlungsart

siehe unsere [Liefer- und Versandbedingungen](#)

### Zuschläge

- Mindermengenzuschlag
- Trockeneiszuschlag
- Gefahrgutzuschlag
- Expressversand

### SZABO-SCANDIC HandelsgmbH

Quellenstraße 110, A-1100 Wien

T. +43(0)1 489 3961-0

F. +43(0)1 489 3961-7

[mail@szabo-scandic.com](mailto:mail@szabo-scandic.com)

[www.szabo-scandic.com](http://www.szabo-scandic.com)

[linkedin.com/company/szaboscandic](https://www.linkedin.com/company/szaboscandic) 



## UK Office

### Everest Biotech Ltd

Cherwell Innovation Centre  
77 Heyford Park  
Upper Heyford  
Oxfordshire  
OX25 5HD  
UK

Enquiries:

[info@everestbiotech.com](mailto:info@everestbiotech.com)

Sales:

[sales@everestbiotech.com](mailto:sales@everestbiotech.com)

Tech support:

[support@everestbiotech.com](mailto:support@everestbiotech.com)

Tel: +44 (0)1869 238326

Fax: +44 (0)1869 238327

## US Office

### Everest Biotech c/o Abcore

405 Maple Street, Suite A106  
Ramona,  
CA 92065  
USA

Inquiries:

[info@everestbiotech.com](mailto:info@everestbiotech.com)

Sales:

[usasales@everestbiotech.com](mailto:usasales@everestbiotech.com)

Tech support:

[support@everestbiotech.com](mailto:support@everestbiotech.com)

Tel: 888-320-4628 (toll-free)

Fax: 888-841-9041

[www.everestbiotech.com](http://www.everestbiotech.com)

**Research Use Only. Not for  
diagnostic or therapeutic use.**

## EB11926 - Goat Anti-ERK3 / MAPK6 Antibody

Size: 100µg specific antibody in 200µl



### Target Protein

**Principal Names:** MAPK6, mitogen-activated protein kinase 6, ERK3, HsT17250, PRKM6, p97MAPK, ERK-3, MAP kinase 6, MAP kinase isoform p97, MAPK 6, extracellular signal-regulated kinase 3, extracellular signal-regulated kinase, p97, p97-MAPK, protein kinase, mitogen-activated 5, protein kinase, mitogen-activated 6

**Official Symbol:** Mapk6

**Accession Number(s):** NP\_002739.1

**Human GeneID(s):** [5597](#)

**Non-Human GeneID(s):** 50772 (mouse), 58840 (rat)

**Important Comments:** Reported variants represent identical protein (NP\_056621.4; NP\_081694.1).

### Immunogen

Peptide with sequence C-HSPVGSPLKSIQ, from the internal region (near C Terminus) of the protein sequence according to NP\_002739.1.

Please note the [peptide](#) is available for sale.

### Purification and Storage

Purified from goat serum by ammonium sulphate precipitation followed by antigen affinity chromatography using the immunizing peptide.

Supplied at 0.5 mg/ml in Tris saline, 0.02% sodium azide, pH7.3 with 0.5% bovine serum albumin.

Aliquot and store at -20°C. Minimize freezing and thawing.

### Applications Tested

**Peptide ELISA:** antibody detection limit dilution 1:128000.

**Western blot:** In transfected HEK293 transiently expressing Mouse ERK3 / Mapk6 fused to GFP the band with expected size is intensified when co-expressed with MK5 as the stabilizer for ERK3. No bands are observed in transfected HEK293 with empty vector and the same band is observed using anti-GFP antibody. Data obtained from Dr. M. B. Menon, Inst. Biochemistry, Hannover Medical School, Germany. Recommended concentration, 0.5-1µg/ml.

**IHC:** Paraffin embedded Human Heart. Recommended concentration: 10µg/ml.

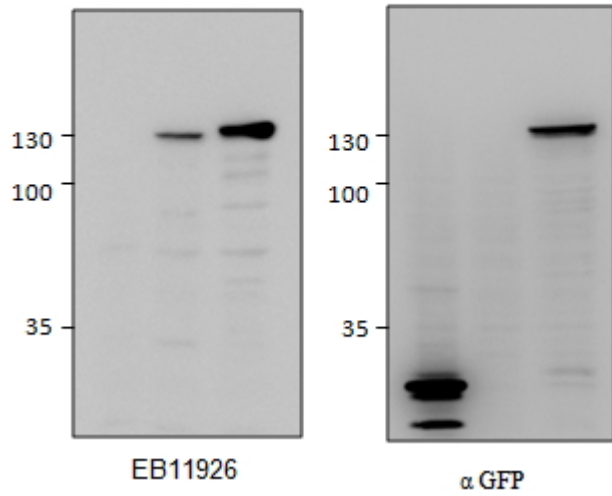
**Immunoprecipitation:** MK5/ERK3 double knockout Mouse Embryonic Fibroblasts (MEFs) retrovirally transduced with MK5/ERK3 or empty vector (GFP) were lysed from confluent plates and used for IP with 1.5ug EB11926. Western blots of the IP were labelled with rabbit anti-ERK3 serum (CST) or with mouse anti-MK5 (SC). An approx 100kDa of ERK3 is only precipitated from lysates of those KO MEFs that have been rescued by the ERK3/MK5 expression construct as described in as described in PMID: 22508986. Data obtained from Dr. M. B. Menon, Inst. Biochemistry, Hannover Medical School, Germany.

### Species Reactivity

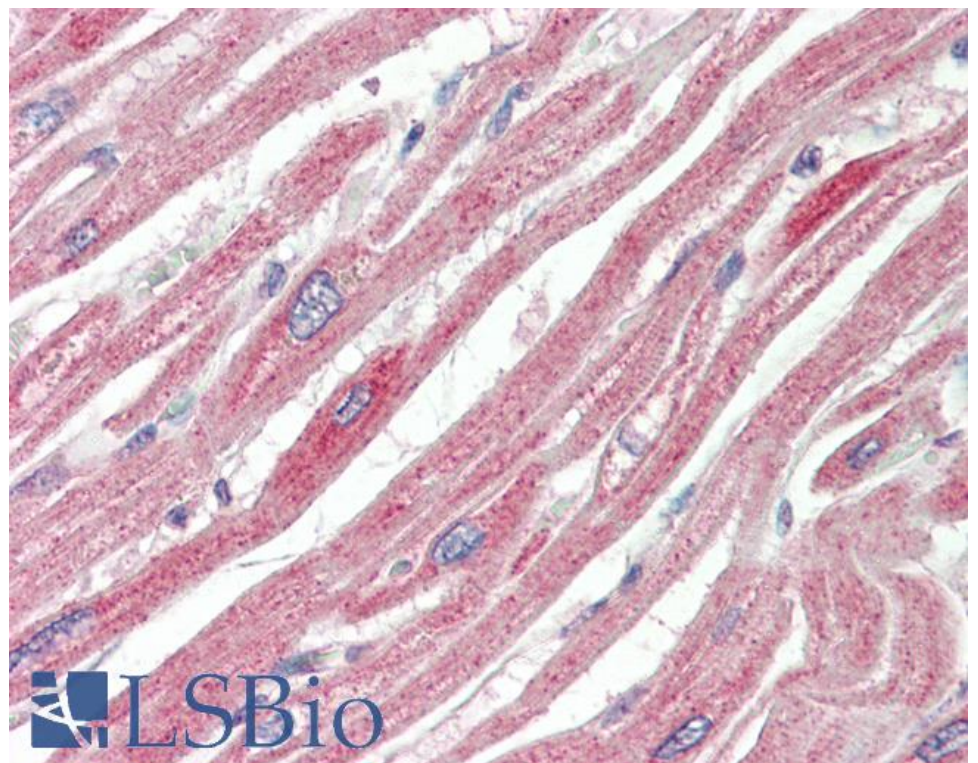
**Tested:** Human, Mouse

**Expected from sequence similarity:** Human, Mouse, Rat, Dog, Pig, Cow

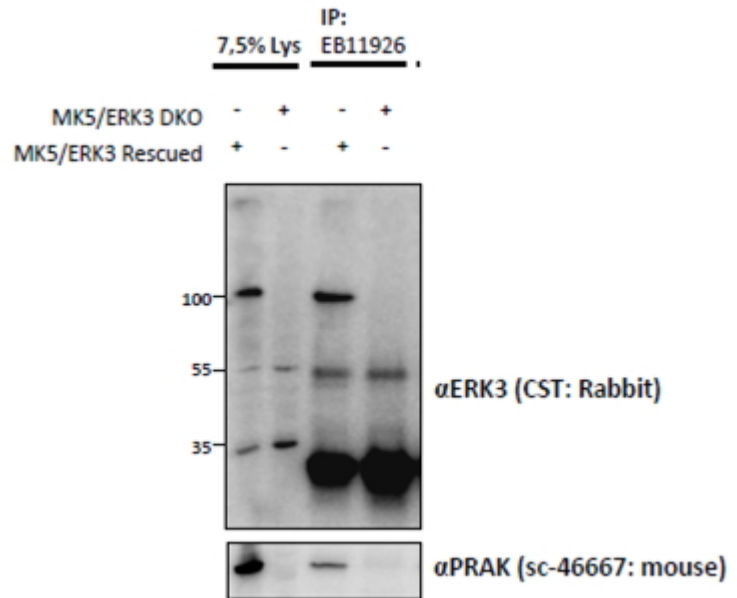
GFP-ERK3	-	+	+	-	+	+
GST-MK5	-	-	+	-	-	+
GFP	+	-	-	+	-	-



HEK293 lysate (10ug protein in RIPA buffer) overexpressing GFP-fused Mouse ERK3 probed with EB11926 (0.5ug/ml) in left panel and with anti-GFP in right panel. GFP-only expression in the first lane. Primary incubations were for 2 hours. Detected by chemiluminescence.



EB11926 (10µg/ml) staining of paraffin embedded Human Heart. Steamed antigen retrieval with citrate buffer pH 6, AP-staining.



EB11926 (1.5ug) immunoprecipitation from lysates of MK5/ERK3 double knockout MEFs, with (third lane) and without (fourth lane) rescued MK5/ERK3 expression through retroviral transduction. The corresponding lysates (first and second lane resp.) were analyzed in parallel in this Western blot labelled with rabbit anti-Erk3 (and co-precipitation was measured using mouse anti-MK5/PRAK in the lower panel).