



SZABO SCANDIC

Part of Europa Biosite

Produktinformation



Forschungsprodukte & Biochemikalien



Zellkultur & Verbrauchsmaterial



Diagnostik & molekulare Diagnostik



Laborgeräte & Service

Weitere Information auf den folgenden Seiten!
See the following pages for more information!



Lieferung & Zahlungsart

siehe unsere [Liefer- und Versandbedingungen](#)

Zuschläge

- Mindermengenzuschlag
- Trockeneiszuschlag
- Gefahrgutzuschlag
- Expressversand

SZABO-SCANDIC HandelsgmbH

Quellenstraße 110, A-1100 Wien

T. +43(0)1 489 3961-0

F. +43(0)1 489 3961-7

mail@szabo-scandic.com

www.szabo-scandic.com

[linkedin.com/company/szaboscandic](https://www.linkedin.com/company/szaboscandic) 



UK Office

Everest Biotech Ltd

Cherwell Innovation Centre
77 Heyford Park
Upper Heyford
Oxfordshire
OX25 5HD
UK

Enquiries:

info@everestbiotech.com

Sales:

sales@everestbiotech.com

Tech support:

support@everestbiotech.com

Tel: +44 (0)1869 238326

Fax: +44 (0)1869 238327

US Office

Everest Biotech c/o Abcore

405 Maple Street, Suite A106
Ramona,
CA 92065
USA

Inquiries:

info@everestbiotech.com

Sales:

usasales@everestbiotech.com

Tech support:

support@everestbiotech.com

Tel: 888-320-4628 (toll-free)

Fax: 888-841-9041

www.everestbiotech.com

**Research Use Only. Not for
diagnostic or therapeutic use.**

EB11927 - Goat Anti-MK5 / MAPKAPK5 Antibody

Size: 100µg specific antibody in 200µl



Target Protein

Principal Names: MAPKAPK5, mitogen-activated protein kinase-activated protein kinase 5, MAPKAP-K5, MK-5, MK5, PRAK, MAP kinase-activated protein kinase 5, MAPK-activated protein kinase 5, MAPKAP kinase 5, MAPKAPK-5, p38-regulated/activated protein kinase

Official Symbol: Mapkapk5

Accession Number(s): NP_003659.2; NP_620777.1

Human GeneID(s): [8550](#)

Non-Human GeneID(s): 17165 (mouse), 498183 (rat)

Immunogen

Peptide with sequence C-STEALDNLVPSAQ, from the internal region of the protein sequence according to NP_003659.2; NP_620777.1.

Please note the [peptide](#) is available for sale.

Purification and Storage

Purified from goat serum by ammonium sulphate precipitation followed by antigen affinity chromatography using the immunizing peptide.

Supplied at 0.5 mg/ml in Tris saline, 0.02% sodium azide, pH7.3 with 0.5% bovine serum albumin.

Aliquot and store at -20°C. Minimize freezing and thawing.

Applications Tested

Peptide ELISA: antibody detection limit dilution 1:32000.

Western blot: In transfected HEK293 transiently expressing either Mouse MK5 fused to GFP or the similar Mouse MK2 fused to GFP; only the expected band was observed in the MK5 lane after EB11927 labeling. Data obtained from Dr. M. B. Menon, Inst. Biochemistry, Hannover Medical School, Germany. Recommended concentration, 0.5-1µg/ml.

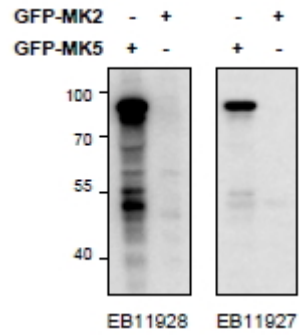
IHC: In paraffin embedded Human Kidney shows brushborder staining in the PCT. Recommended concentration, 4-8µg/ml.

Immunoprecipitation: MK5/ERK3 double knockout Mouse Embryonic Fibroblasts (MEFs) retrovirally transduced with Mk5/Erk3 or empty vector (GFP) were lysed from confluent plates and used for IP with 1.5µg EB11927 or EB11928. Western blots of the IP were labelled with mouse anti-MK5 (SC) or with rabbit anti-ERK3 serum (CST). An approx 55kDa of MK5 is only precipitated from lysates of those KO MEFs that have been rescued by the ERK3/MK5 expression constructs described in PMID: 22508986. Data obtained from Dr. M. B. Menon, Inst. Biochemistry, Hannover Medical School, Germany.

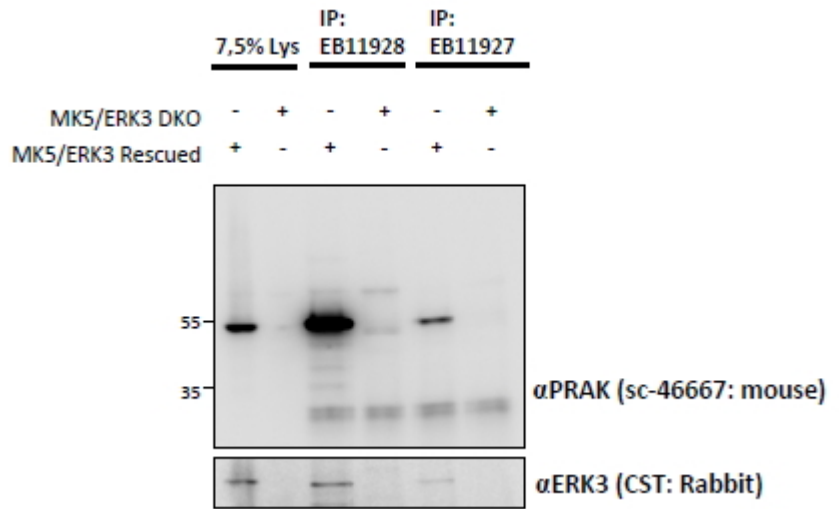
Species Reactivity

Tested: Human, Mouse

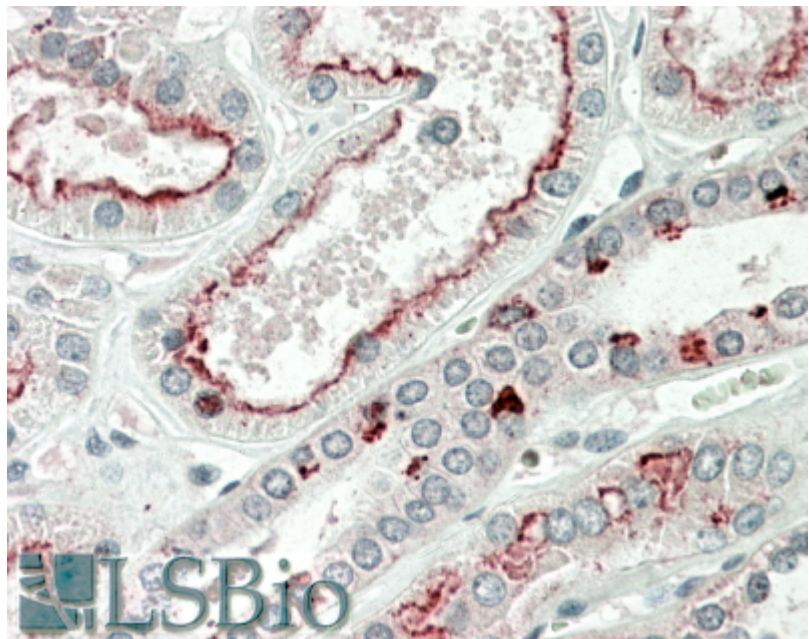
Expected from sequence similarity: Human, Mouse, Rat, Dog, Pig, Cow



HEK293 lysate (10ug protein in RIPA buffer) overexpressing Mouse MK5-GFP (first lane) or Mouse MK2-GFP (second lane) probed with EB11927 (0.5ug/ml) in right panel and with EB11928 (0.5ug/ml) on left panel, Primary incubations were for 2 hours. Detected by chemiluminescence.



EB11927 and EB11928 (1.5ug) immunoprecipitations from lysates of MK5/ERK3 double knockout MEFs, with (third and fifth lanes) and without (fourth and sixth lanes) rescued MK5/ERK3 expression through retroviral transduction. The corresponding lysates (first and second lane resp.) were analyzed in parallel in this Western blot labelled with mouse anti-MK5 / PRAK (and co-precipitation was measured using rabbit anti-ERK3 in the lower panel).



EB11927 (5µg/ml) staining of paraffin embedded Human Kidney. Steamed antigen retrieval with citrate buffer pH 6, AP-staining.