



# SZABO SCANDIC

Part of Europa Biosite

## Produktinformation



Forschungsprodukte & Biochemikalien



Zellkultur & Verbrauchsmaterial



Diagnostik & molekulare Diagnostik



Laborgeräte & Service

Weitere Information auf den folgenden Seiten!  
See the following pages for more information!



### Lieferung & Zahlungsart

siehe unsere [Liefer- und Versandbedingungen](#)

### Zuschläge

- Mindermengenzuschlag
- Trockeneiszuschlag
- Gefahrgutzuschlag
- Expressversand

### SZABO-SCANDIC HandelsgmbH

Quellenstraße 110, A-1100 Wien

T. +43(0)1 489 3961-0

F. +43(0)1 489 3961-7

[mail@szabo-scandic.com](mailto:mail@szabo-scandic.com)

[www.szabo-scandic.com](http://www.szabo-scandic.com)

[linkedin.com/company/szaboscandic](https://www.linkedin.com/company/szaboscandic) 



## UK Office

### Everest Biotech Ltd

Cherwell Innovation Centre  
77 Heyford Park  
Upper Heyford  
Oxfordshire  
OX25 5HD  
UK

Enquiries:

[info@everestbiotech.com](mailto:info@everestbiotech.com)

Sales:

[sales@everestbiotech.com](mailto:sales@everestbiotech.com)

Tech support:

[support@everestbiotech.com](mailto:support@everestbiotech.com)

Tel: +44 (0)1869 238326

Fax: +44 (0)1869 238327

## US Office

### Everest Biotech c/o Abcore

405 Maple Street, Suite A106  
Ramona,  
CA 92065  
USA

Inquiries:

[info@everestbiotech.com](mailto:info@everestbiotech.com)

Sales:

[usasales@everestbiotech.com](mailto:usasales@everestbiotech.com)

Tech support:

[support@everestbiotech.com](mailto:support@everestbiotech.com)

Tel: 888-320-4628 (toll-free)

Fax: 888-841-9041

[www.everestbiotech.com](http://www.everestbiotech.com)

**Research Use Only. Not for  
diagnostic or therapeutic use.**

## EB11928 - Goat Anti-MK5 / MAPKAPK5 (aa192-206) Antibody

Size: 100µg specific antibody in 200µl



### Target Protein

**Principal Names:** MAPKAPK5, mitogen-activated protein kinase-activated protein kinase 5, MAPKAP-K5, MK-5, MK5, PRAK, MAP kinase-activated protein kinase 5, MAPK-activated protein kinase 5, MAPKAP kinase 5, MAPKAPK-5, p38-regulated/activated protein kinase

**Official Symbol:** Mapkapk5

**Accession Number(s):** NP\_003659.2; NP\_620777.1

**Human GeneID(s):** [8550](#)

**Non-Human GeneID(s):** 17165 (mouse), 498183 (rat)

### Immunogen

Peptide with sequence C-PQVLEAQRHRHQKEKS, from the internal region of the protein sequence according to NP\_003659.2; NP\_620777.1.

Please note the [peptide](#) is available for sale.

### Purification and Storage

Purified from goat serum by ammonium sulphate precipitation followed by antigen affinity chromatography using the immunizing peptide.

Supplied at 0.5 mg/ml in Tris saline, 0.02% sodium azide, pH7.3 with 0.5% bovine serum albumin.

Aliquot and store at -20°C. Minimize freezing and thawing.

### Applications Tested

**Peptide ELISA:** antibody detection limit dilution 1:64000.

**Western blot:** In transfected HEK293 transiently expressing either Mouse MK5 fused to GFP or the similar Mouse MK2 fused to GFP, only the expected band was observed in the MK5 lane after EB11928 labeling. Data obtained from Dr. M. B. Menon, Inst. Biochemistry, Hannover Medical School, Germany. Recommended concentration, 0.5-1µg/ml.

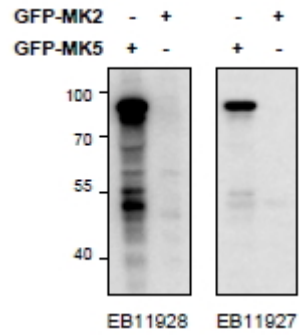
**IHC:** In paraffin embedded Human Kidney shows nuclear staining in the DCT. Recommended concentration, 4-8µg/ml.

**Immunoprecipitation:** MK5/ERK3 double knockout Mouse Embryonic Fibroblasts (MEFs) retrovirally transduced with MK5/ERK3 or empty vector (GFP) were lysed from confluent plates and used for IP with 1.5µg EB11927 or EB11928. Western blots of the IP were labelled with mouse anti-MK5 (SC) or with rabbit anti-ERK3 serum (CST). An approx 55kDa of MK5 is only precipitated from lysates of those KO MEFs that have been rescued by the ERK3/MK5 expression construct as described in PMID: 22508986. Data obtained from Dr. M. B. Menon, Inst. Biochemistry, Hannover Medical School, Germany.

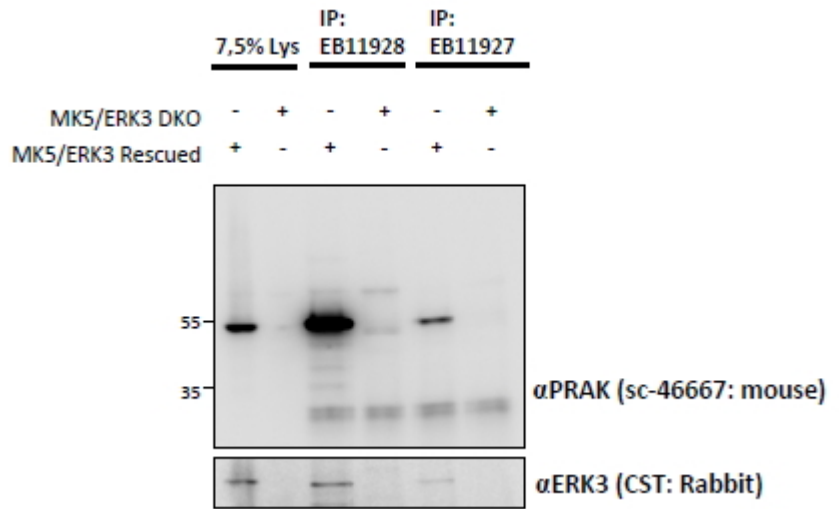
### Species Reactivity

**Tested:** Human, Mouse

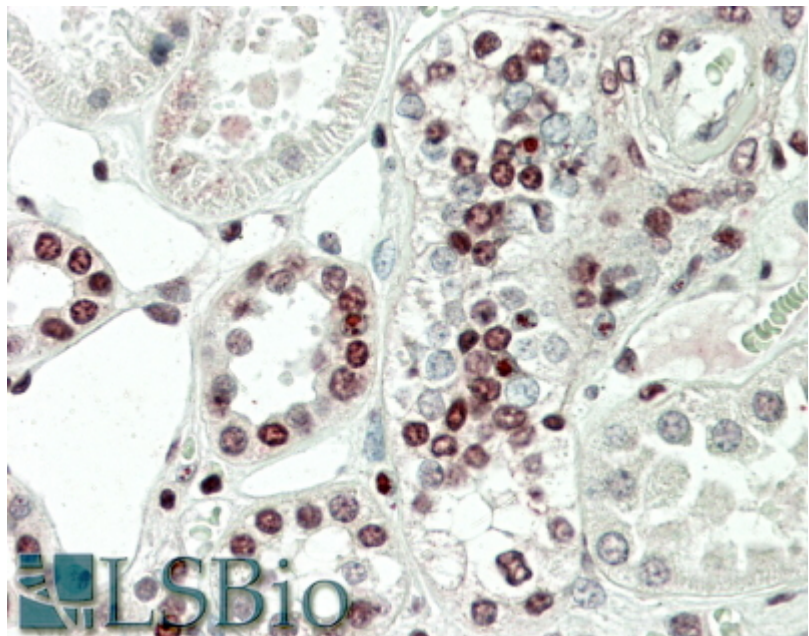
**Expected from sequence similarity:** Human, Mouse, Rat, Dog, Pig, Cow



HEK293 lysate (10ug protein in RIPA buffer) overexpressing Mouse MK5-GFP (first lane) or Mouse MK2-GFP (second lane) probed with EB11927 (0.5ug/ml) in right panel and with EB11928 (0.5ug/ml) on left panel, Primary incubations were for 2 hours. Detected by chemiluminescence.



EB11927 and EB11928 (1.5ug) immunoprecipitations from lysates of MK5/ERK3 double knockout MEFs, with (third and fifth lanes) and without (fourth and sixth lanes) rescued MK5/ERK3 expression through retroviral transduction. The corresponding lysates (first and second lane resp.) were analyzed in parallel in this Western blot labelled with mouse anti-MK5 / PRAK (and co-precipitation was measured using rabbit anti-ERK3 in the lower panel).



EB11927 (5µg/ml) staining of paraffin embedded Human Kidney. Steamed antigen retrieval with citrate buffer pH 6, AP-staining.