



SZABO SCANDIC

Part of Europa Biosite

Produktinformation



Forschungsprodukte & Biochemikalien



Zellkultur & Verbrauchsmaterial



Diagnostik & molekulare Diagnostik



Laborgeräte & Service

Weitere Information auf den folgenden Seiten!
See the following pages for more information!



Lieferung & Zahlungsart

siehe unsere [Liefer- und Versandbedingungen](#)

Zuschläge

- Mindermengenzuschlag
- Trockeneiszuschlag
- Gefahrgutzuschlag
- Expressversand

SZABO-SCANDIC HandelsgmbH

Quellenstraße 110, A-1100 Wien

T. +43(0)1 489 3961-0

F. +43(0)1 489 3961-7

mail@szabo-scandic.com

www.szabo-scandic.com

[linkedin.com/company/szaboscandic](https://www.linkedin.com/company/szaboscandic) 



UK Office

Everest Biotech Ltd

Cherwell Innovation Centre
77 Heyford Park
Upper Heyford
Oxfordshire
OX25 5HD
UK

Enquiries:

info@everestbiotech.com

Sales:

sales@everestbiotech.com

Tech support:

support@everestbiotech.com

Tel: +44 (0)1869 238326

Fax: +44 (0)1869 238327

US Office

Everest Biotech c/o Abcore

405 Maple Street, Suite A106
Ramona,
CA 92065
USA

Inquiries:

info@everestbiotech.com

Sales:

usasales@everestbiotech.com

Tech support:

support@everestbiotech.com

Tel: 888-320-4628 (toll-free)

Fax: 888-841-9041

www.everestbiotech.com

**Research Use Only. Not for
diagnostic or therapeutic use.**

EB12006 - Goat Anti-CCDC3 (aa134-148) Antibody

Size: 100µg specific antibody in 200µl



Target Protein

Principal Names: CCDC3, coiled-coil domain containing 3, coiled-coil domain-containing protein 3, fat/vessel-derived secretory protein, favine

Official Symbol: CCDC3

Accession Number(s): NP_113643.1

Human GeneID(s): [83643](#)

Non-Human GeneID(s): 74186 (mouse), 498795 (rat)

Immunogen

Peptide with sequence C-PHGVNFQDAIFPDTQ, from the internal region of the protein sequence according to NP_113643.1.

Please note the [peptide](#) is available for sale.

Purification and Storage

Purified from goat serum by ammonium sulphate precipitation followed by antigen affinity chromatography using the immunizing peptide.

Supplied at 0.5 mg/ml in Tris saline, 0.02% sodium azide, pH7.3 with 0.5% bovine serum albumin.

Aliquot and store at -20°C. Minimize freezing and thawing.

Applications Tested

Peptide ELISA: antibody detection limit dilution 1:64000.

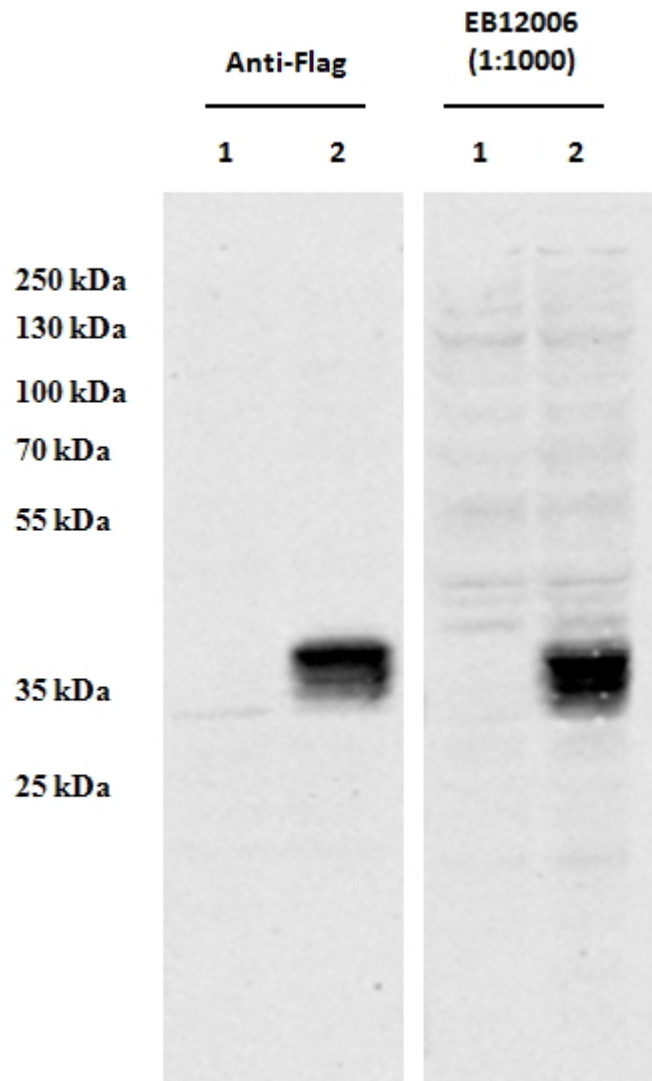
Western blot: In transfected HEK293 transiently expressing Human CCDC3 (DYKDDDDK tagged), a band of approx. 36kDa is observed. No bands are observed in mock-transfected HEK293 and the same band is observed using anti-DYKDDDDK antibody. Recommended concentration: 0.5-1µg/ml.

IHC: Paraffin embedded Human Colon. Recommended concentration: 5µg/ml.

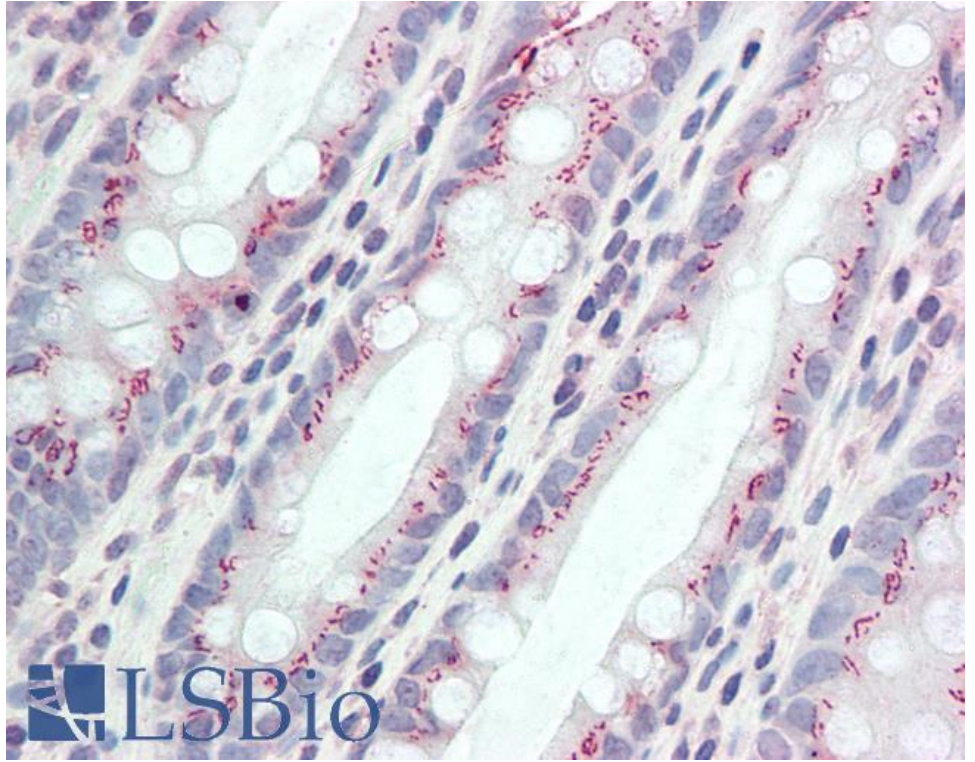
Species Reactivity

Tested: Human

Expected from sequence similarity: Human, Mouse, Rat, Dog, Pig, Cow



HEK293 overexpressing Human CCDC3 with C-terminal tag (DYKDDDDK) and probed with anti-DYKDDDDK in the left panel and with EB12006 (0.5ug/ml) in the right panel (empty vector transfection in first lanes). Data obtained from Dr. YangXin Fu, Dept Oncology, University of Alberta, Edmonton, Canada.



EB12006 (5µg/ml) staining of paraffin embedded Human Colon. Steamed antigen retrieval with citrate buffer pH 6, AP-staining.