



SZABO SCANDIC

Part of Europa Biosite

Produktinformation



Forschungsprodukte & Biochemikalien



Zellkultur & Verbrauchsmaterial



Diagnostik & molekulare Diagnostik



Laborgeräte & Service

Weitere Information auf den folgenden Seiten!
See the following pages for more information!



Lieferung & Zahlungsart

siehe unsere [Liefer- und Versandbedingungen](#)

Zuschläge

- Mindermengenzuschlag
- Trockeneiszuschlag
- Gefahrgutzuschlag
- Expressversand

SZABO-SCANDIC HandelsgmbH

Quellenstraße 110, A-1100 Wien

T. +43(0)1 489 3961-0

F. +43(0)1 489 3961-7

mail@szabo-scandic.com

www.szabo-scandic.com

[linkedin.com/company/szaboscandic](https://www.linkedin.com/company/szaboscandic) 



UK Office

Everest Biotech Ltd

Cherwell Innovation Centre
77 Heyford Park
Upper Heyford
Oxfordshire
OX25 5HD
UK

Enquiries:

info@everestbiotech.com

Sales:

sales@everestbiotech.com

Tech support:

support@everestbiotech.com

Tel: +44 (0)1869 238326

Fax: +44 (0)1869 238327

US Office

Everest Biotech c/o Abcore

405 Maple Street, Suite A106
Ramona,
CA 92065
USA

Inquiries:

info@everestbiotech.com

Sales:

usasales@everestbiotech.com

Tech support:

support@everestbiotech.com

Tel: 888-320-4628 (toll-free)

Fax: 888-841-9041

www.everestbiotech.com

**Research Use Only. Not for
diagnostic or therapeutic use.**

EB12108 - Goat Anti-Myosin IH Antibody

Size: 100µg specific antibody in 200µl



Target Protein

Principal Names: MYO1H, myosin IH, myosin-1H, myosin-Ih, unconventional myosin-Ih

Official Symbol: Myo1H

Accession Number(s): NP_001158045.1

Human GeneID(s): [283446](#)

Non-Human GeneID(s): 231646 (mouse), 687866 (rat)

Immunogen

Peptide with sequence C-EDQVYKDKNGQLR, from the C Terminus of the protein sequence according to NP_001158045.1.

Please note the [peptide](#) is available for sale.

Purification and Storage

Purified from goat serum by ammonium sulphate precipitation followed by antigen affinity chromatography using the immunizing peptide.

Supplied at 0.5 mg/ml in Tris saline, 0.02% sodium azide, pH7.3 with 0.5% bovine serum albumin.

Aliquot and store at -20°C. Minimize freezing and thawing.

Applications Tested

Peptide ELISA: antibody detection limit dilution 1:128000.

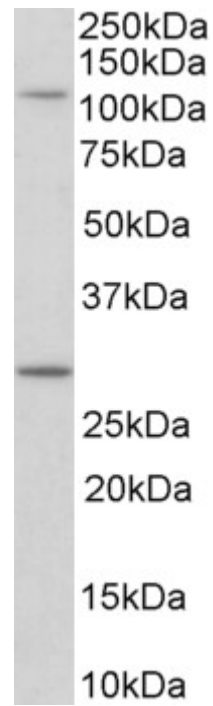
Western blot: Approx 110kDa band observed in lysates of cell line NIH3T3 (calculated MW of 118kDa according to NP_001158045.1). Recommended concentration: 0.1-0.3µg/ml. An additional band of unknown identity was also consistently observed at 28kDa. This band was successfully blocked by incubation with the immunizing peptide. Primary incubation was 1 hour. Preliminary testing was unsuccessful on Rat and Pig Skeletal Muscle for this particular batch.

IHC: Paraffin embedded Human Kidney. Recommended concentration: 5µg/ml.

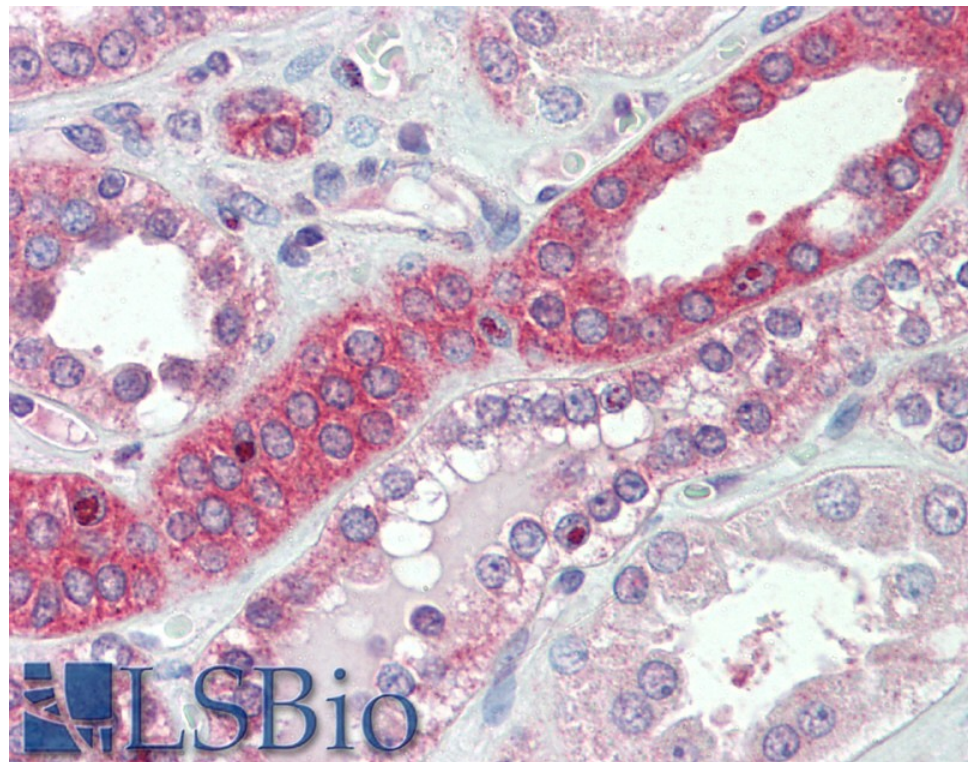
Species Reactivity

Tested: Human, Mouse

Expected from sequence similarity: Human, Mouse, Rat, Cow, Pig



EB12108 (0.1 μ g/ml) staining of NIH3T3 lysate (35 μ g protein in RIPA buffer). Detected by chemiluminescence.



EB12108 (5 μ g/ml) staining of paraffin embedded Human Kidney. Steamed antigen retrieval with citrate buffer pH 6, AP-staining.