



SZABO SCANDIC

Part of Europa Biosite

Produktinformation



Forschungsprodukte & Biochemikalien



Zellkultur & Verbrauchsmaterial



Diagnostik & molekulare Diagnostik



Laborgeräte & Service

Weitere Information auf den folgenden Seiten!
See the following pages for more information!



Lieferung & Zahlungsart

siehe unsere [Liefer- und Versandbedingungen](#)

Zuschläge

- Mindermengenzuschlag
- Trockeneiszuschlag
- Gefahrgutzuschlag
- Expressversand

SZABO-SCANDIC HandelsgmbH

Quellenstraße 110, A-1100 Wien

T. +43(0)1 489 3961-0

F. +43(0)1 489 3961-7

mail@szabo-scandic.com

www.szabo-scandic.com

[linkedin.com/company/szaboscandic](https://www.linkedin.com/company/szaboscandic) 



UK Office

Everest Biotech Ltd

Cherwell Innovation Centre
77 Heyford Park
Upper Heyford
Oxfordshire
OX25 5HD
UK

Enquiries:

info@everestbiotech.com

Sales:

sales@everestbiotech.com

Tech support:

support@everestbiotech.com

Tel: +44 (0)1869 238326

Fax: +44 (0)1869 238327

US Office

Everest Biotech c/o Abcore

405 Maple Street, Suite A106
Ramona,
CA 92065
USA

Inquiries:

info@everestbiotech.com

Sales:

usasales@everestbiotech.com

Tech support:

support@everestbiotech.com

Tel: 888-320-4628 (toll-free)

Fax: 888-841-9041

www.everestbiotech.com

**Research Use Only. Not for
diagnostic or therapeutic use.**

EB12113 - Goat Anti-CEBPB (aa68-81) Antibody

Size: 100µg specific antibody in 200µl



Target Protein

Principal Names: CEBPB, CCAAT/enhancer binding protein (C/EBP), beta, C/EBP-beta, CRP2, IL6DBP, LAP, NF-IL6, TCF5, CCAAT/enhancer-binding protein beta, TCF-5, interleukin 6-dependent DNA-binding protein, liver-enriched transcriptional activator protein, nuclear factor NF-IL6, nuclear factor of interleukin 6, transcription factor 5

Official Symbol: CEBPB

Accession Number(s): NP_005185.2

Human GeneID(s): [1051](#)

Non-Human GeneID(s): 12608 (mouse), 24253 (rat)

Immunogen

Peptide with sequence C-DHERAIDFSPYLEP, from the internal region of the protein sequence according to NP_005185.2.

Please note the [peptide](#) is available for sale.

Purification and Storage

Purified from goat serum by ammonium sulphate precipitation followed by antigen affinity chromatography using the immunizing peptide.

Supplied at 0.5 mg/ml in Tris saline, 0.02% sodium azide, pH7.3 with 0.5% bovine serum albumin.

Aliquot and store at -20°C. Minimize freezing and thawing.

Applications Tested

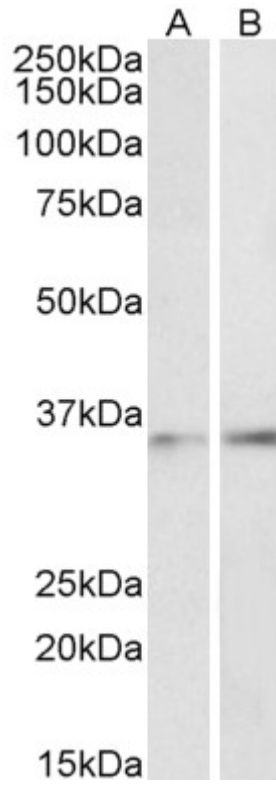
Peptide ELISA: antibody detection limit dilution 1:128000.

Western blot: Approx 35kDa band observed in Human Skin and Pig Lung lysates, and in lysates of cell line NIH3T3 (calculated MW of 36.1kDa according to Human NP_005185.2, 31.5kDa according to Mouse NP_034013.1 and 36.2kDa according to Pig NP_001186818.1). Recommended concentration: 1-3µg/ml.

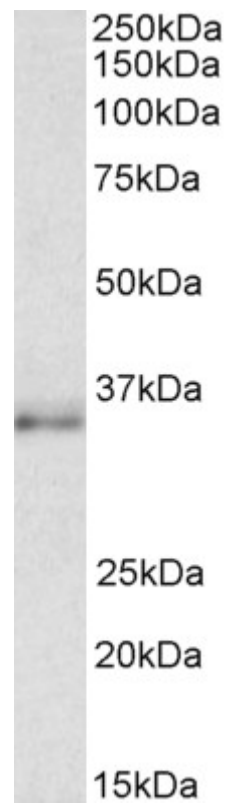
Species Reactivity

Tested: Human, Mouse, Pig

Expected from sequence similarity: Human, Mouse, Rat, Dog, Pig, Cow



EB12113 (1 μ g/ml) staining of Human Skin (A) and Pig Lung (B) lysates (35 μ g protein in RIPA buffer). Primary incubation was 1 hour. Detected by chemiluminescence.



EB12113 (1 μ g/ml) staining of NIH3T3 lysate (35 μ g protein in RIPA buffer). Primary incubation was 1 hour. Detected by chemiluminescence.