



SZABO SCANDIC

Part of Europa Biosite

Produktinformation



Forschungsprodukte & Biochemikalien



Zellkultur & Verbrauchsmaterial



Diagnostik & molekulare Diagnostik



Laborgeräte & Service

Weitere Information auf den folgenden Seiten!
See the following pages for more information!



Lieferung & Zahlungsart

siehe unsere [Liefer- und Versandbedingungen](#)

Zuschläge

- Mindermengenzuschlag
- Trockeneiszuschlag
- Gefahrgutzuschlag
- Expressversand

SZABO-SCANDIC HandelsgmbH

Quellenstraße 110, A-1100 Wien

T. +43(0)1 489 3961-0

F. +43(0)1 489 3961-7

mail@szabo-scandic.com

www.szabo-scandic.com

[linkedin.com/company/szaboscandic](https://www.linkedin.com/company/szaboscandic) 



UK Office

Everest Biotech Ltd

Cherwell Innovation Centre
77 Heyford Park
Upper Heyford
Oxfordshire
OX25 5HD
UK

Enquiries:

info@everestbiotech.com

Sales:

sales@everestbiotech.com

Tech support:

support@everestbiotech.com

Tel: +44 (0)1869 238326

Fax: +44 (0)1869 238327

US Office

Everest Biotech c/o Abcore

405 Maple Street, Suite A106
Ramona,
CA 92065
USA

Inquiries:

info@everestbiotech.com

Sales:

usasales@everestbiotech.com

Tech support:

support@everestbiotech.com

Tel: 888-320-4628 (toll-free)

Fax: 888-841-9041

www.everestbiotech.com

**Research Use Only. Not for
diagnostic or therapeutic use.**

EB12120 - Goat Anti-DLX2 (aa279-292) Antibody

Size: 100µg specific antibody in 200µl



Target Protein

Principal Names: DLX2, distal-less homeobox 2, TES-1, TES1, distal-less homeo box 2, homeobox protein DLX-2

Official Symbol: DLX2

Accession Number(s): NP_004396.1

Human GeneID(s): [1746](#)

Non-Human GeneID(s): 13392 (mouse), 296499 (rat)

Immunogen

Peptide with sequence C-NYPWYHQQTSGSASH, from the internal region (near C Terminus) of the protein sequence according to NP_004396.1.

Please note the [peptide](#) is available for sale.

Purification and Storage

Purified from goat serum by ammonium sulphate precipitation followed by antigen affinity chromatography using the immunizing peptide.

Supplied at 0.5 mg/ml in Tris saline, 0.02% sodium azide, pH7.3 with 0.5% bovine serum albumin.

Aliquot and store at -20°C. Minimize freezing and thawing.

Applications Tested

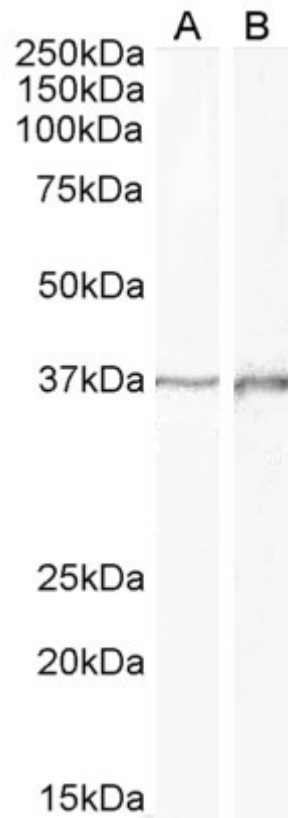
Peptide ELISA: antibody detection limit dilution 1:4000.

Western blot: Approx 37-38kDa band observed in Human (Cerebellum) and Rat Brain lysates (calculated MW of 34.2kDa according to Human NP_004396.1 and 34.8kDa according to Rat NP_001178675.1). Recommended concentration: 1-3µg/ml.

Species Reactivity

Tested: Human, Rat

Expected from sequence similarity: Human, Mouse, Rat, Dog, Pig, Cow



EB12120 (1 μ g/ml) staining of Human Cerebellum (A) and Rat (B) Brain lysate (35 μ g protein in RIPA buffer). Primary incubation was 1 hour. Detected by chemiluminescence.