



SZABO SCANDIC

Part of Europa Biosite

Produktinformation



Forschungsprodukte & Biochemikalien



Zellkultur & Verbrauchsmaterial



Diagnostik & molekulare Diagnostik



Laborgeräte & Service

Weitere Information auf den folgenden Seiten!
See the following pages for more information!



Lieferung & Zahlungsart

siehe unsere [Liefer- und Versandbedingungen](#)

Zuschläge

- Mindermengenzuschlag
- Trockeneiszuschlag
- Gefahrgutzuschlag
- Expressversand

SZABO-SCANDIC HandelsgmbH

Quellenstraße 110, A-1100 Wien

T. +43(0)1 489 3961-0

F. +43(0)1 489 3961-7

mail@szabo-scandic.com

www.szabo-scandic.com

[linkedin.com/company/szaboscandic](https://www.linkedin.com/company/szaboscandic) 



UK Office

Everest Biotech Ltd

Cherwell Innovation Centre
77 Heyford Park
Upper Heyford
Oxfordshire
OX25 5HD
UK

Enquiries:

info@everestbiotech.com

Sales:

sales@everestbiotech.com

Tech support:

support@everestbiotech.com

Tel: +44 (0)1869 238326

Fax: +44 (0)1869 238327

US Office

Everest Biotech c/o Abcore

405 Maple Street, Suite A106
Ramona,
CA 92065
USA

Inquiries:

info@everestbiotech.com

Sales:

usasales@everestbiotech.com

Tech support:

support@everestbiotech.com

Tel: 888-320-4628 (toll-free)

Fax: 888-841-9041

www.everestbiotech.com

**Research Use Only. Not for
diagnostic or therapeutic use.**

EB12149 - Goat Anti-NPHS2 / SRN1 Antibody

Size: 100µg specific antibody in 200µl



Target Protein

Principal Names: NPHS2, nephrosis 2, idiopathic, steroid-resistant (podocin), PDCN, SRN1, podocin

Official Symbol: NPHS2

Accession Number(s): NP_055440.1

Human GeneID(s): [7827](#)

Immunogen

Peptide with sequence C-SPSKPVEPLNPKK, from the C Terminus of the protein sequence according to NP_055440.1.

Please note the [peptide](#) is available for sale.

Purification and Storage

Purified from goat serum by ammonium sulphate precipitation followed by antigen affinity chromatography using the immunizing peptide.

Supplied at 0.5 mg/ml in Tris saline, 0.02% sodium azide, pH7.3 with 0.5% bovine serum albumin.

Aliquot and store at -20°C. Minimize freezing and thawing.

Applications Tested

Peptide ELISA: antibody detection limit dilution 1:64000.

Western blot: Approx 42-45kDa band observed in Human and Mouse Kidney lysates (calculated MW of 42.2kDa according to Human NP_055440.1 and Mouse NP_569723.1).

Recommended concentration: 0.5-2µg/ml. Primary incubation 1 hour at room temperature.

Species Reactivity

Tested: Human, Mouse

Expected from sequence similarity: Human, Mouse, Pig, Cow

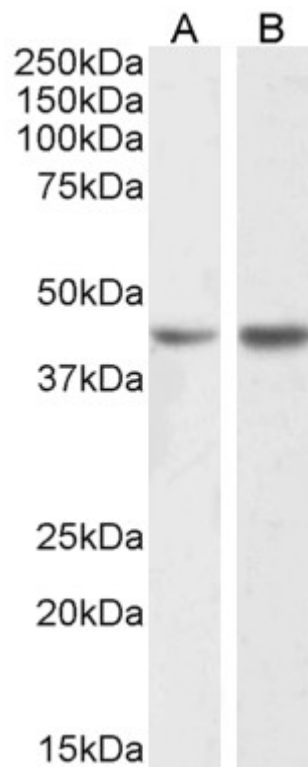
Specific Reference

This antibody (previous batch) has been successfully used in IF on Mouse:

Pepe M. Ekulu et al.

Novel Human Podocyte Cell Model Carrying G2/G2 APOL1 High-Risk Genotype Cells. 2021 Aug; 10(8): 1914.

PMID: 34440683



EB12149 (1 μ g/ml) staining of Human (A) and Mouse (B) Kidney lysate (35 μ g protein in RIPA buffer). Detected by chemiluminescence.