



SZABO SCANDIC

Part of Europa Biosite

Produktinformation



Forschungsprodukte & Biochemikalien



Zellkultur & Verbrauchsmaterial



Diagnostik & molekulare Diagnostik



Laborgeräte & Service

Weitere Information auf den folgenden Seiten!
See the following pages for more information!



Lieferung & Zahlungsart

siehe unsere [Liefer- und Versandbedingungen](#)

Zuschläge

- Mindermengenzuschlag
- Trockeneiszuschlag
- Gefahrgutzuschlag
- Expressversand

SZABO-SCANDIC HandelsgmbH

Quellenstraße 110, A-1100 Wien

T. +43(0)1 489 3961-0

F. +43(0)1 489 3961-7

mail@szabo-scandic.com

www.szabo-scandic.com

[linkedin.com/company/szaboscandic](https://www.linkedin.com/company/szaboscandic) 



UK Office

Everest Biotech Ltd

Cherwell Innovation Centre
77 Heyford Park
Upper Heyford
Oxfordshire
OX25 5HD
UK

Enquiries:

info@everestbiotech.com

Sales:

sales@everestbiotech.com

Tech support:

support@everestbiotech.com

Tel: +44 (0)1869 238326

Fax: +44 (0)1869 238327

US Office

Everest Biotech c/o Abcore

405 Maple Street, Suite A106
Ramona,
CA 92065
USA

Inquiries:

info@everestbiotech.com

Sales:

usasales@everestbiotech.com

Tech support:

support@everestbiotech.com

Tel: 888-320-4628 (toll-free)

Fax: 888-841-9041

www.everestbiotech.com

**Research Use Only. Not for
diagnostic or therapeutic use.**

EB12182 - Goat Anti-Ferd3l (aa56-68) Antibody

Size: 100µg specific antibody in 200µl



Target Protein

Principal Names: Ferd3l, Fer3-like (Drosophila), Mnato3, N-twist, Nato, Nato3, Ntwist, bHLHa31, fer3, basic helix-loop-helix protein N-twist, fer3-like protein, nephew of atonal 3, neuronal twist

Official Symbol: Ferd3l

Accession Number(s): NP_277057.1

Non-Human GeneID(s): 114712 (mouse)

Immunogen

Peptide with sequence C-QFDERYQEVEGDE, from the internal region of the protein sequence according to NP_277057.1.

Please note the [peptide](#) is available for sale.

Purification and Storage

Purified from goat serum by ammonium sulphate precipitation followed by antigen affinity chromatography using the immunizing peptide.

Supplied at 0.5 mg/ml in Tris saline, 0.02% sodium azide, pH7.3 with 0.5% bovine serum albumin.

Aliquot and store at -20°C. Minimize freezing and thawing.

Applications Tested

Peptide ELISA: antibody detection limit dilution 1:128000.

IHC: Frozen sections of Mouse embryo E13.5 shows staining of the floor plate of the developing spinal cord. Recommended concentration, 1-3µg/ml.

Species Reactivity

Tested: Mouse

Expected from sequence similarity: Mouse

Specific Reference

This antibody has been successfully used in ICC on Mouse:

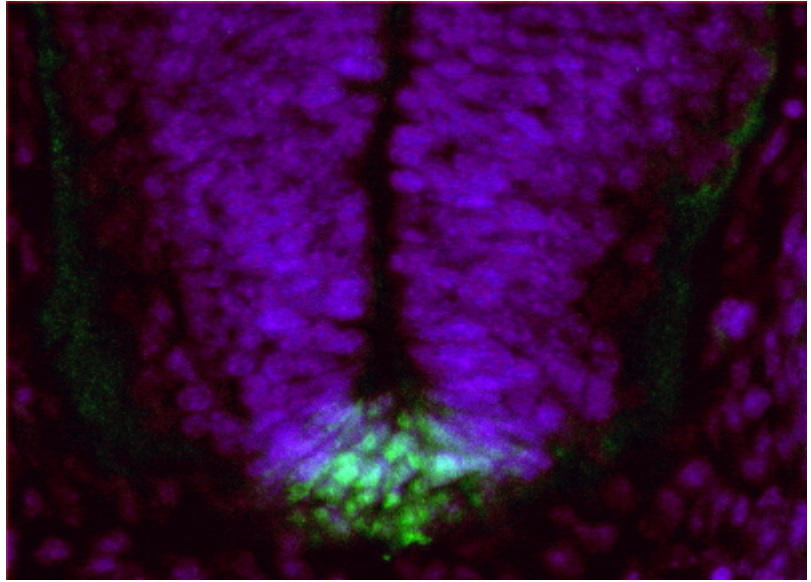
Khazanov S, Paz Y, Hefetz A, Gonzales BJ, Netser Y, Mansour AA, Ben-Arie N.

Uncovering floor plate descendants in

the ependyma of adult mouse CNS using mapping of Nato3-expressing cells.

Int J Dev Biol. 2016 Aug 16.

PMID: 27528042



EB12182 (1 μ g/ml) staining of PFA-perfused cryosection of Mouse embryo E13.5. Primary incubation overnight at 4C. Alexa Fluor 488 detection (green) in combination with nuclear DAPI staining (blue). Data obtained by Ben Jerry Gonzales from Nissim Ben-Arie's lab, Dept. of Cell and Developmental Biology, The Hebrew University of Jerusalem, Israel.