



SZABO SCANDIC

Part of Europa Biosite

Produktinformation



Forschungsprodukte & Biochemikalien



Zellkultur & Verbrauchsmaterial



Diagnostik & molekulare Diagnostik



Laborgeräte & Service

Weitere Information auf den folgenden Seiten!
See the following pages for more information!



Lieferung & Zahlungsart

siehe unsere [Liefer- und Versandbedingungen](#)

Zuschläge

- Mindermengenzuschlag
- Trockeneiszuschlag
- Gefahrgutzuschlag
- Expressversand

SZABO-SCANDIC HandelsgmbH

Quellenstraße 110, A-1100 Wien

T. +43(0)1 489 3961-0

F. +43(0)1 489 3961-7

mail@szabo-scandic.com

www.szabo-scandic.com

[linkedin.com/company/szaboscandic](https://www.linkedin.com/company/szaboscandic) 



UK Office

Everest Biotech Ltd

Cherwell Innovation Centre
77 Heyford Park
Upper Heyford
Oxfordshire
OX25 5HD
UK

Enquiries:

info@everestbiotech.com

Sales:

sales@everestbiotech.com

Tech support:

support@everestbiotech.com

Tel: +44 (0)1869 238326

Fax: +44 (0)1869 238327

US Office

Everest Biotech c/o Abcore

405 Maple Street, Suite A106
Ramona,
CA 92065
USA

Inquiries:

info@everestbiotech.com

Sales:

usasales@everestbiotech.com

Tech support:

support@everestbiotech.com

Tel: 888-320-4628 (toll-free)

Fax: 888-841-9041

www.everestbiotech.com

**Research Use Only. Not for
diagnostic or therapeutic use.**

EB12208 - Goat Anti-HOXC6 (isoform 1) Antibody

Size: 100µg specific antibody in 200µl



Target Protein

Principal Names: HOXC6, homeobox C6, CP25, HHO.C8, HOX3, HOX3C, homeo box 3C, homeo box C6, homeo box C8 protein, homeobox protein CP25, homeobox protein HHO.C8, homeobox protein Hox-3C, homeobox protein Hox-C6

Official Symbol: HOXC6

Accession Number(s): NP_004494.1

Human GeneID(s): [3223](#)

Non-Human GeneID(s): 15425 (mouse), 252885 (rat)

Important Comments: This antibody is expected to recognize isoform 1 (NP_004494.1) only.

Immunogen

Peptide with sequence C-PNVALNSTAYDPVRH, from the internal region (near N Terminus) of the protein sequence according to NP_004494.1.

Please note the [peptide](#) is available for sale.

Purification and Storage

Purified from goat serum by ammonium sulphate precipitation followed by antigen affinity chromatography using the immunizing peptide.

Supplied at 0.5 mg/ml in Tris saline, 0.02% sodium azide, pH7.3 with 0.5% bovine serum albumin.

Aliquot and store at -20°C. Minimize freezing and thawing.

Applications Tested

Peptide ELISA: antibody detection limit dilution 1:128000.

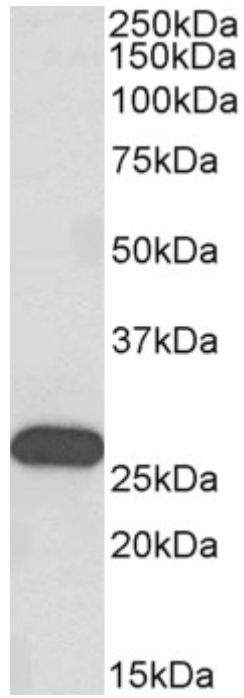
Western blot: Approx 26kDa band observed in Human Brain (Olfactory bulb) and in Rat and Pig Brain lysates (calculated MW of 26.9kDa according to NP_004494.1). In Mouse Brain lysates the band runs like a 27kDa band. Recommended concentration: 0.03-0.1µg/ml. Primary incubation was 1 hour.

IHC: Paraffin embedded Human Tonsil. Recommended concentration: 5µg/ml.

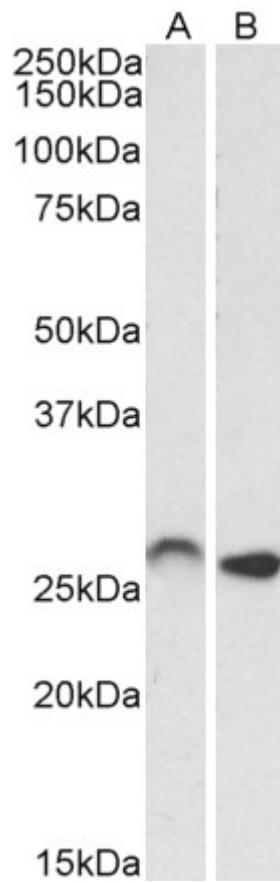
Species Reactivity

Tested: Human, Mouse, Rat, Pig

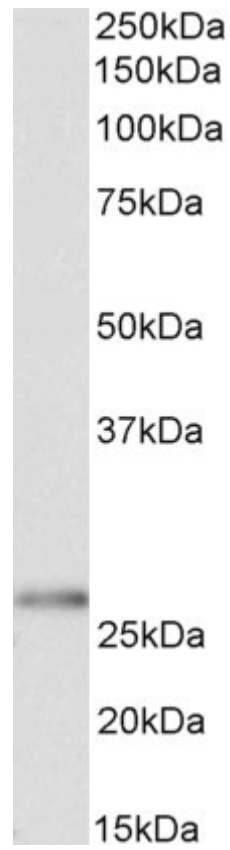
Expected from sequence similarity: Human, Mouse, Rat, Dog, Pig, Cow



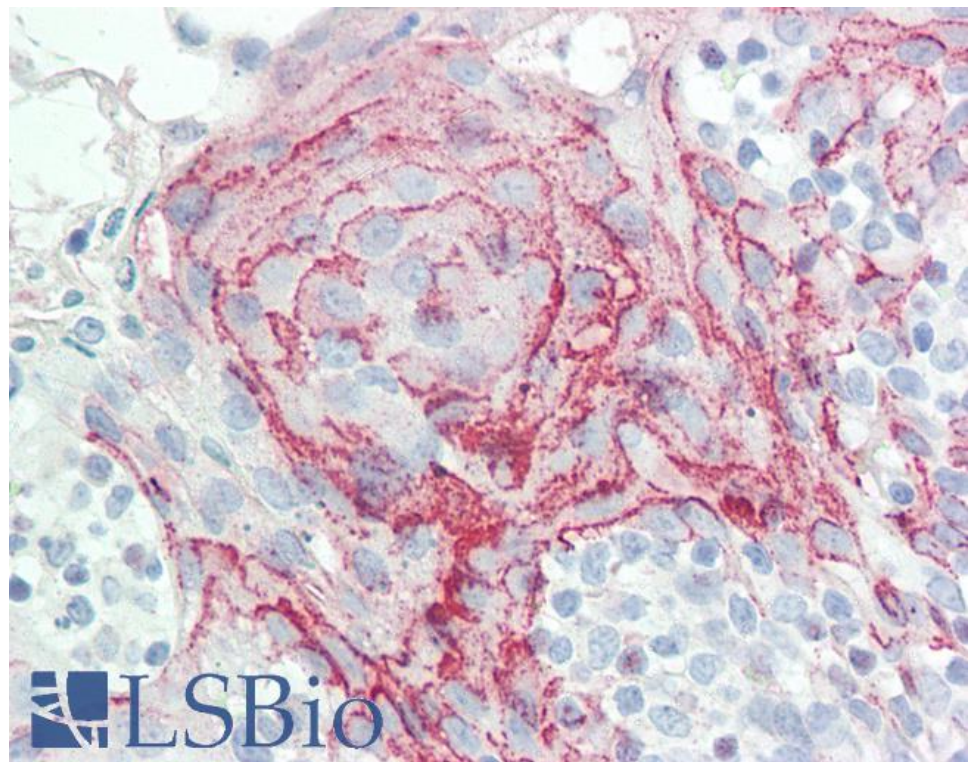
EB12208 (0.3 μ g/ml) staining of Human Olfactory bulb lysate (35 μ g protein in RIPA buffer). Detected by chemiluminescence.



EB12208 (0.01 μ g/ml) staining of Mouse (A) and Rat (B) Brain lysates (35 μ g protein in RIPA buffer). Detected by chemiluminescence.



EB12208 (0.03 μ g/ml) staining of Pig Brain lysates (35 μ g protein in RIPA buffer). Detected by chemiluminescence.



EB12208 (5 μ g/ml) staining of paraffin embedded Human Tonsil. Steamed antigen retrieval with citrate buffer pH 6, AP-staining.