



SZABO SCANDIC

Part of Europa Biosite

Produktinformation



Forschungsprodukte & Biochemikalien



Zellkultur & Verbrauchsmaterial



Diagnostik & molekulare Diagnostik



Laborgeräte & Service

Weitere Information auf den folgenden Seiten!
See the following pages for more information!



Lieferung & Zahlungsart

siehe unsere [Liefer- und Versandbedingungen](#)

Zuschläge

- Mindermengenzuschlag
- Trockeneiszuschlag
- Gefahrgutzuschlag
- Expressversand

SZABO-SCANDIC HandelsgmbH

Quellenstraße 110, A-1100 Wien

T. +43(0)1 489 3961-0

F. +43(0)1 489 3961-7

mail@szabo-scandic.com

www.szabo-scandic.com

[linkedin.com/company/szaboscandic](https://www.linkedin.com/company/szaboscandic) 



UK Office

Everest Biotech Ltd

Cherwell Innovation Centre
77 Heyford Park
Upper Heyford
Oxfordshire
OX25 5HD
UK

Enquiries:

info@everestbiotech.com

Sales:

sales@everestbiotech.com

Tech support:

support@everestbiotech.com

Tel: +44 (0)1869 238326

Fax: +44 (0)1869 238327

US Office

Everest Biotech c/o Abcore

405 Maple Street, Suite A106
Ramona,
CA 92065
USA

Inquiries:

info@everestbiotech.com

Sales:

usasales@everestbiotech.com

Tech support:

support@everestbiotech.com

Tel: 888-320-4628 (toll-free)

Fax: 888-841-9041

www.everestbiotech.com

**Research Use Only. Not for
diagnostic or therapeutic use.**

EB12395 - Goat Anti-LDHB Antibody

Size: 100µg specific antibody in 200µl



Target Protein

Principal Names: LDHB, lactate dehydrogenase B, LDH-B, LDH-H, LDHBD, TRG-5, L-lactate dehydrogenase B chain, LDH heart subunit, lactate dehydrogenase H chain, renal carcinoma antigen NY-REN-46

Official Symbol: LDHB

Accession Number(s): NP_002291.1

Human GeneID(s): [3945](#)

Non-Human GeneID(s): 16832 (mouse), 24534 (rat)

Important Comments: Reported variants represent identical protein: NP_002291.1, NP_001167568.1.

Immunogen

Peptide with sequence C-NARGLTSVINQKLK, from the internal region (near C terminus) of the protein sequence according to NP_002291.1.

Please note the [peptide](#) is available for sale.

Purification and Storage

Purified from goat serum by ammonium sulphate precipitation followed by antigen affinity chromatography using the immunizing peptide.

Supplied at 0.5 mg/ml in Tris saline, 0.02% sodium azide, pH7.3 with 0.5% bovine serum albumin.

Aliquot and store at -20°C. Minimize freezing and thawing.

Applications Tested

Peptide ELISA: antibody detection limit dilution 1:16000.

Western blot: Approx 35kDa band observed in Human, Mouse, Rat and Pig Heart lysates (calculated MW of 36.6kDa according to NP_002291.1). Recommended concentration: 0.03-0.1µg/ml.

Additional validation: This antibody has been successfully used in the following paper: Sikorski et al. (2018) PMID: 30377371.

Species Reactivity

Tested: Human, Mouse, Rat, Pig

Expected from sequence similarity: Human, Mouse, Rat, Dog, Pig, Cow

Specific Reference

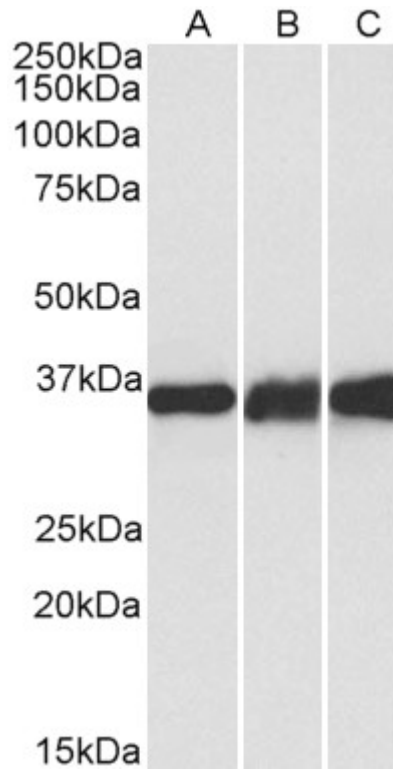
This antibody has been successfully used in the following paper:

Krzysztof Sikorski, Adi Mehta, Marit Inngjerdigen, Flourina Thakor, Simon Kling, Tomas Kalina, Tuula A. Nyman, Maria Ekman Stensland, Wei Zhou, Gustavo A. De Souza, Lars Holden, Jan Stuchly, Markus Templin and Fridtjof Lund-Johansen

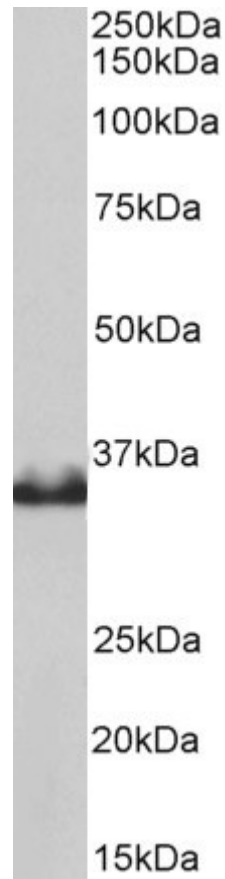
A high-throughput pipeline for validation of antibodies

Nat Methods. 2018 Nov;15(11):909-912

PMID: 30377371



EB12395 (0.1 μ g/ml) staining of Human (A), Mouse (B) and Rat (C) Heart lysates (35 μ g protein in RIPA buffer). Primary incubation was 1 hour. Detected by chemiluminescence.



EB12395 (0.1 μ g/ml) staining of Pig Heart lysates (35 μ g protein in RIPA buffer). Primary incubation was 1 hour. Detected by chemiluminescence.