



SZABO SCANDIC

Part of Europa Biosite

Produktinformation



Forschungsprodukte & Biochemikalien



Zellkultur & Verbrauchsmaterial



Diagnostik & molekulare Diagnostik



Laborgeräte & Service

Weitere Information auf den folgenden Seiten!
See the following pages for more information!



Lieferung & Zahlungsart

siehe unsere [Liefer- und Versandbedingungen](#)

Zuschläge

- Mindermengenzuschlag
- Trockeneiszuschlag
- Gefahrgutzuschlag
- Expressversand

SZABO-SCANDIC HandelsgmbH

Quellenstraße 110, A-1100 Wien

T. +43(0)1 489 3961-0

F. +43(0)1 489 3961-7

mail@szabo-scandic.com

www.szabo-scandic.com

[linkedin.com/company/szaboscandic](https://www.linkedin.com/company/szaboscandic) 



UK Office

Everest Biotech Ltd

Cherwell Innovation Centre
77 Heyford Park
Upper Heyford
Oxfordshire
OX25 5HD
UK

Enquiries:

info@everestbiotech.com

Sales:

sales@everestbiotech.com

Tech support:

support@everestbiotech.com

Tel: +44 (0)1869 238326

Fax: +44 (0)1869 238327

US Office

Everest Biotech c/o Abcore

405 Maple Street, Suite A106
Ramona,
CA 92065
USA

Inquiries:

info@everestbiotech.com

Sales:

usasales@everestbiotech.com

Tech support:

support@everestbiotech.com

Tel: 888-320-4628 (toll-free)

Fax: 888-841-9041

www.everestbiotech.com

**Research Use Only. Not for
diagnostic or therapeutic use.**

EB12417 - Goat Anti-tropomyosin 4 / TPM4 Antibody

Size: 100µg specific antibody in 200µl



Target Protein

Principal Names: TPM4, tropomyosin 4, TM30p1, tropomyosin alpha-4 chain, tropomyosin-4

Official Symbol: TPM4

Accession Number(s): NP_001138632.1; NP_003281.1

Human GeneID(s): [7171](#)

Non-Human GeneID(s): 326618 (mouse), 24852 (rat)

Important Comments: This antibody is expected to recognize both reported isoforms (NP_001138632.1; NP_003281.1).

Immunogen

Peptide with sequence C-ENVGLHQTLDQ, from the C Terminus of the protein sequence according to NP_001138632.1; NP_003281.1.

Please note the [peptide](#) is available for sale.

Purification and Storage

Purified from goat serum by ammonium sulphate precipitation followed by antigen affinity chromatography using the immunizing peptide.

Supplied at 0.5 mg/ml in Tris saline, 0.02% sodium azide, pH7.3 with 0.5% bovine serum albumin.

Aliquot and store at -20°C. Minimize freezing and thawing.

Applications Tested

Peptide ELISA: antibody detection limit dilution 1:128000.

Western blot: Approx 32kDa band observed in Human Platelets, Pig Heart and in NIH3T3 lysates (calculated MW of 32.7kDa according to NP_001138632.1).

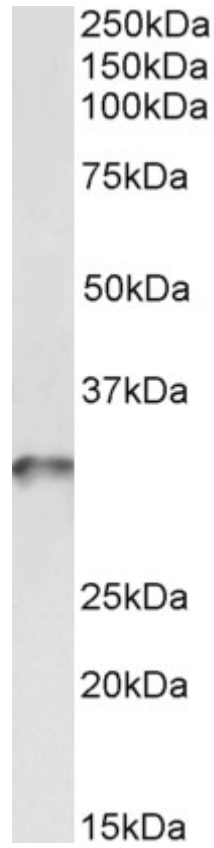
Recommended concentration: 0.1-0.3µg/ml. Primary incubation was 1 hour.

IHC: Paraffin embedded Human Placenta and Prostate. Recommended concentration: 2.5µg/ml.

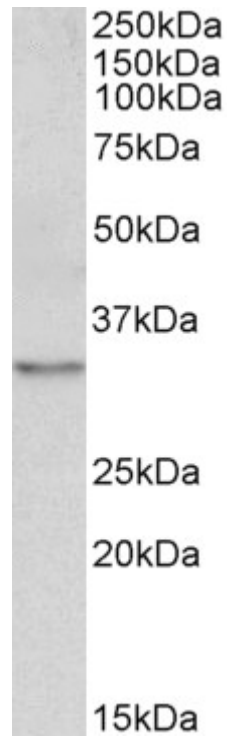
Species Reactivity

Tested: Human, Mouse, Pig

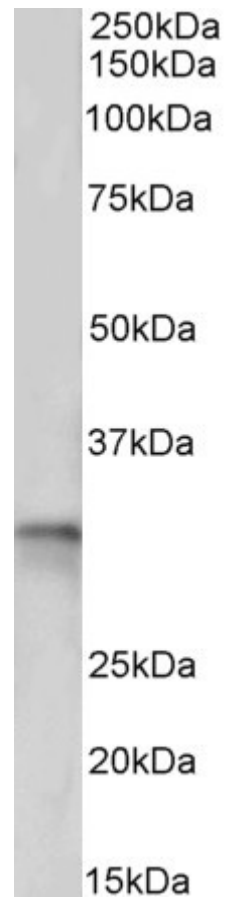
Expected from sequence similarity: Human, Mouse, Rat, Dog, Pig, Cow



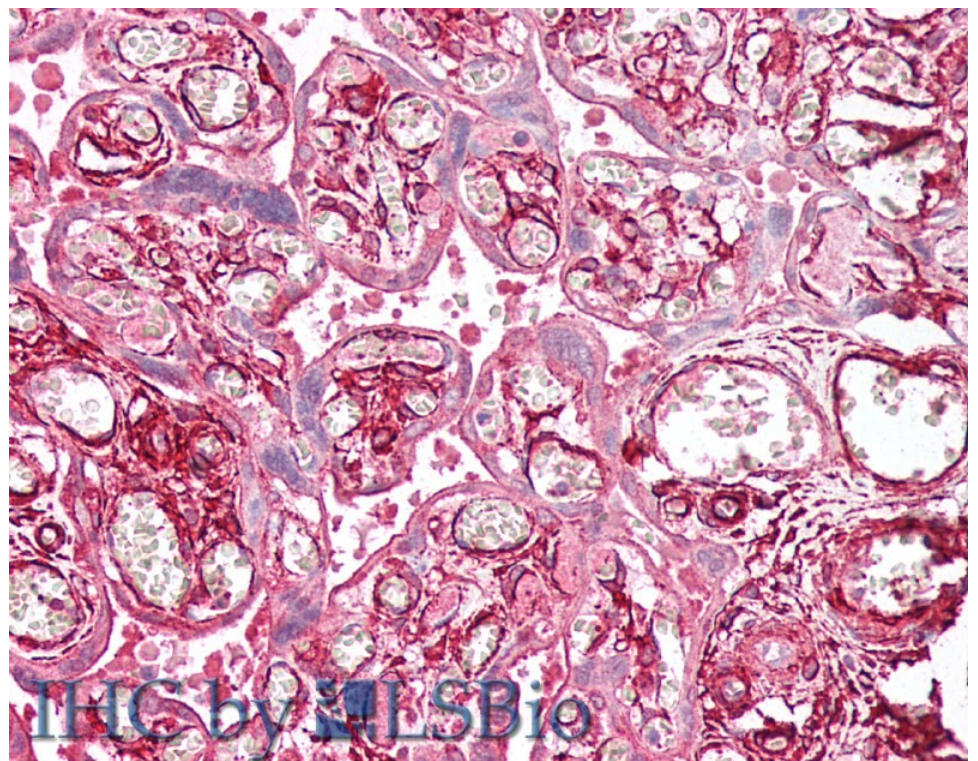
EB12417 (0.03 μ g/ml) staining of Human Platelets lysate (35 μ g protein in RIPA buffer). Detected by chemiluminescence.



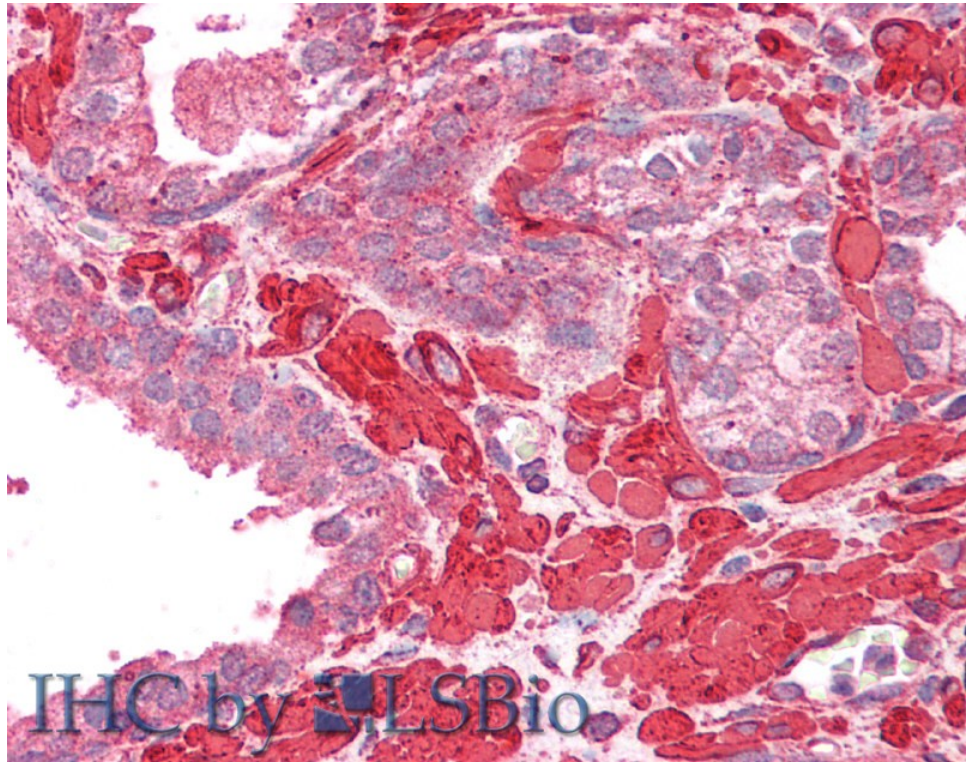
EB12417 (0.1 μ g/ml) staining of NIH3T3 lysate (35 μ g protein in RIPA buffer). Detected by chemiluminescence.



EB12417 (0.5 μ g/ml) staining of Pig Heart lysate (35 μ g protein in RIPA buffer). Detected by chemiluminescence.



EB12417 (2.5 μ g/ml) staining of paraffin embedded Human Placenta. Steamed antigen retrieval with citrate buffer pH 6, AP-staining.



EB12417 (2.5µg/ml) staining of paraffin embedded Human Prostate. Steamed antigen retrieval with citrate buffer pH 6, AP-staining.