



SZABO SCANDIC

Part of Europa Biosite

Produktinformation



Forschungsprodukte & Biochemikalien



Zellkultur & Verbrauchsmaterial



Diagnostik & molekulare Diagnostik



Laborgeräte & Service

Weitere Information auf den folgenden Seiten!
See the following pages for more information!



Lieferung & Zahlungsart

siehe unsere [Liefer- und Versandbedingungen](#)

Zuschläge

- Mindermengenzuschlag
- Trockeneiszuschlag
- Gefahrgutzuschlag
- Expressversand

SZABO-SCANDIC HandelsgmbH

Quellenstraße 110, A-1100 Wien

T. +43(0)1 489 3961-0

F. +43(0)1 489 3961-7

mail@szabo-scandic.com

www.szabo-scandic.com

[linkedin.com/company/szaboscandic](https://www.linkedin.com/company/szaboscandic)



UK Office

Everest Biotech Ltd

Cherwell Innovation Centre
77 Heyford Park
Upper Heyford
Oxfordshire
OX25 5HD
UK

Enquiries:

info@everestbiotech.com

Sales:

sales@everestbiotech.com

Tech support:

support@everestbiotech.com

Tel: +44 (0)1869 238326

Fax: +44 (0)1869 238327

US Office

Everest Biotech c/o Abcore

405 Maple Street, Suite A106
Ramona,
CA 92065
USA

Inquiries:

info@everestbiotech.com

Sales:

usasales@everestbiotech.com

Tech support:

support@everestbiotech.com

Tel: 888-320-4628 (toll-free)

Fax: 888-841-9041

www.everestbiotech.com

**Research Use Only. Not for
diagnostic or therapeutic use.**

EB12420 - Goat Anti-ACTN1 (aa596-609) Antibody

Size: 100µg specific antibody in 200µl



Target Protein

Principal Names: ACTN1, actinin, alpha 1, F-actin cross-linking protein, actinin 1 smooth muscle, alpha-actinin cytoskeletal isoform, alpha-actinin-1, non-muscle alpha-actinin-1

Official Symbol: ACTN1

Accession Number(s): NP_001123476.1; NP_001093.1; NP_001123477.1

Human GeneID(s): [87](#)

Non-Human GeneID(s): 109711 (mouse), 81634 (rat)

Important Comments: This antibody is expected to recognize all reported isoforms (NP_001123476.1; NP_001093.1; NP_001123477.1).

Immunogen

Peptide with sequence C-TPQEINGKWDHVRQ, from the internal region of the protein sequence according to NP_001123476.1; NP_001093.1; NP_001123477.1.

Please note the [peptide](#) is available for sale.

Purification and Storage

Purified from goat serum by ammonium sulphate precipitation followed by antigen affinity chromatography using the immunizing peptide.

Supplied at 0.5 mg/ml in Tris saline, 0.02% sodium azide, pH7.3 with 0.5% bovine serum albumin.

Aliquot and store at -20°C. Minimize freezing and thawing.

Applications Tested

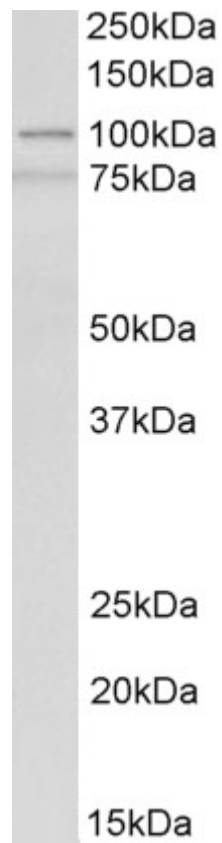
Peptide ELISA: antibody detection limit dilution 1:128000.

Western blot: Approx 100kDa band observed in Human, Mouse and Rat Spleen lysates (calculated MW of 103kDa according to NP_001093.1). Recommended concentration: 0.3-1µg/ml. An additional band of unknown identity was also consistently observed at 75kDa. This band was successfully blocked by incubation with the immunizing peptide. We would appreciate any feedback from people in the field - have any such results been reported with other antibodies/lysates? Have any further splice variants/modified forms been reported?

Species Reactivity

Tested: Human, Mouse, Rat

Expected from sequence similarity: Human, Mouse, Rat, Dog, Pig, Cow



EB12420 (0.3 μ g/ml) staining of Human Spleen lysate (35 μ g protein in RIPA buffer). Primary incubation was 1 hour. Detected by chemiluminescence.



EB12420 (0.3µg/ml) staining of Mouse (A) and Rat (B) Spleen lysates (35µg protein in RIPA buffer). Primary incubation was 1 hour. Detected by chemiluminescence.