



SZABO SCANDIC

Part of Europa Biosite

Produktinformation



Forschungsprodukte & Biochemikalien



Zellkultur & Verbrauchsmaterial



Diagnostik & molekulare Diagnostik



Laborgeräte & Service

Weitere Information auf den folgenden Seiten!
See the following pages for more information!



Lieferung & Zahlungsart

siehe unsere [Liefer- und Versandbedingungen](#)

Zuschläge

- Mindermengenzuschlag
- Trockeneiszuschlag
- Gefahrgutzuschlag
- Expressversand

SZABO-SCANDIC HandelsgmbH

Quellenstraße 110, A-1100 Wien

T. +43(0)1 489 3961-0

F. +43(0)1 489 3961-7

mail@szabo-scandic.com

www.szabo-scandic.com

[linkedin.com/company/szaboscandic](https://www.linkedin.com/company/szaboscandic) 



UK Office

Everest Biotech Ltd

Cherwell Innovation Centre
77 Heyford Park
Upper Heyford
Oxfordshire
OX25 5HD
UK

Enquiries:

info@everestbiotech.com

Sales:

sales@everestbiotech.com

Tech support:

support@everestbiotech.com

Tel: +44 (0)1869 238326

Fax: +44 (0)1869 238327

US Office

Everest Biotech c/o Abcore

405 Maple Street, Suite A106
Ramona,
CA 92065
USA

Inquiries:

info@everestbiotech.com

Sales:

usasales@everestbiotech.com

Tech support:

support@everestbiotech.com

Tel: 888-320-4628 (toll-free)

Fax: 888-841-9041

www.everestbiotech.com

**Research Use Only. Not for
diagnostic or therapeutic use.**

EB12515 - Goat Anti-CX3CR1 (aa34-47) Antibody

Size: 100µg specific antibody in 200µl



Target Protein

Principal Names: CX3CR1, chemokine (C-X3-C motif) receptor 1, CCRL1, CMKBRL1, CMKDR1, GPR13, GPRV28, V28, C-X3-C CKR-1, CMK-BRL-1, CMK-BRL1, CX3C chemokine receptor 1, G protein-coupled receptor 13, G-protein coupled receptor 13, beta chemokine receptor-like 1

Official Symbol: CX3CR1

Accession Number(s): NP_001164645.1; NP_001328.1

Human GeneID(s): [1524](#)

Important Comments: This antibody is expected to recognize both reported isoforms (NP_001164645.1; NP_001328.1). Reported variants represent identical protein: NP_001164643.1, NP_001328.1, NP_001164642.1.

Immunogen

Peptide with sequence C-DQFPESVTENFEYD, from the internal region (near N terminus) of the protein sequence according to NP_001164645.1; NP_001328.1.

Please note the [peptide](#) is available for sale.

Purification and Storage

Purified from goat serum by ammonium sulphate precipitation followed by antigen affinity chromatography using the immunizing peptide.

Supplied at 0.5 mg/ml in Tris saline, 0.02% sodium azide, pH7.3 with 0.5% bovine serum albumin.

Aliquot and store at -20°C. Minimize freezing and thawing.

Applications Tested

Peptide ELISA: antibody detection limit dilution 1:128000.

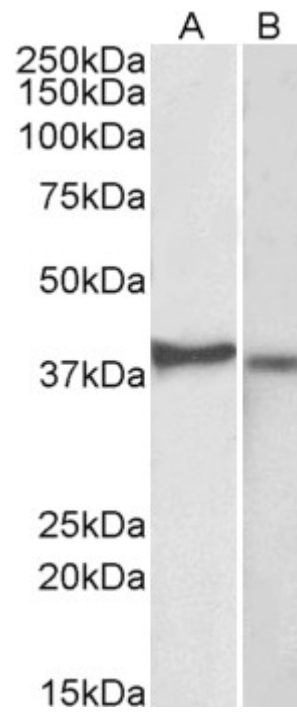
Western blot: Approx 39kDa band observed in lysates of cell line Kelly and 37kDa in lysates of cell line U251-MG (calculated MW of 40.4kDa according to NP_001328.1).

Recommended concentration: 1-3µg/ml.

Species Reactivity

Tested: Human

Expected from sequence similarity: Human



EB12515 (2 μ g/ml) staining of Kelly (A) and U251-MG (B) lysates (35 μ g protein in RIPA buffer). Primary incubation was 1 hour. Detected by chemiluminescence.