



SZABO SCANDIC

Part of Europa Biosite

Produktinformation



Forschungsprodukte & Biochemikalien



Zellkultur & Verbrauchsmaterial



Diagnostik & molekulare Diagnostik



Laborgeräte & Service

Weitere Information auf den folgenden Seiten!
See the following pages for more information!



Lieferung & Zahlungsart

siehe unsere [Liefer- und Versandbedingungen](#)

Zuschläge

- Mindermengenzuschlag
- Trockeneiszuschlag
- Gefahrgutzuschlag
- Expressversand

SZABO-SCANDIC HandelsgmbH

Quellenstraße 110, A-1100 Wien

T. +43(0)1 489 3961-0

F. +43(0)1 489 3961-7

mail@szabo-scandic.com

www.szabo-scandic.com

[linkedin.com/company/szaboscandic](https://www.linkedin.com/company/szaboscandic) 



UK Office

Everest Biotech Ltd

Cherwell Innovation Centre
77 Heyford Park
Upper Heyford
Oxfordshire
OX25 5HD
UK

Enquiries:

info@everestbiotech.com

Sales:

sales@everestbiotech.com

Tech support:

support@everestbiotech.com

Tel: +44 (0)1869 238326

Fax: +44 (0)1869 238327

US Office

Everest Biotech c/o Abcore

405 Maple Street, Suite A106
Ramona,
CA 92065
USA

Inquiries:

info@everestbiotech.com

Sales:

usasales@everestbiotech.com

Tech support:

support@everestbiotech.com

Tel: 888-320-4628 (toll-free)

Fax: 888-841-9041

www.everestbiotech.com

**Research Use Only. Not for
diagnostic or therapeutic use.**

EB12588 - Goat Anti-CCAR2 / DBC1 (aa842-855) Antibody

Size: 100µg specific antibody in 200µl



Target Protein

Principal Names: CCAR2, cell cycle and apoptosis regulator 2, DBC-1, DBC1, KIAA1967, NET35, p30 DBC, p30DBC, cell cycle and apoptosis regulator protein 2, cell division cycle and apoptosis regulator protein 2, deleted in breast cancer 1, p30 DBC protein

Official Symbol: CCAR2

Accession Number(s): NP_066997.3

Human GeneID(s): [57805](#)

Non-Human GeneID(s): 219158 (mouse), 306007 (rat)

Immunogen

Peptide with sequence C-ESHNRFSATEVTNK, from the internal region of the protein sequence according to NP_066997.3.

Please note the [peptide](#) is available for sale.

Purification and Storage

Purified from goat serum by ammonium sulphate precipitation followed by antigen affinity chromatography using the immunizing peptide.

Supplied at 0.5 mg/ml in Tris saline, 0.02% sodium azide, pH7.3 with 0.5% bovine serum albumin.

Aliquot and store at -20°C. Minimize freezing and thawing.

Applications Tested

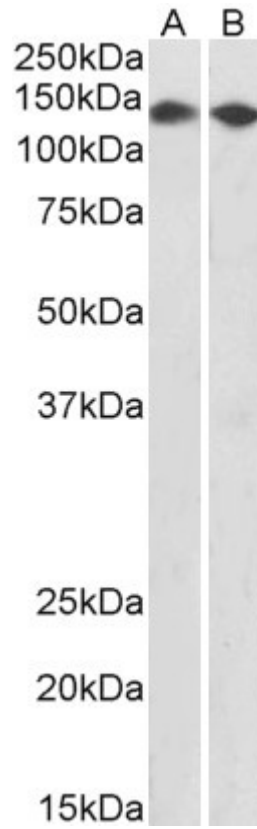
Peptide ELISA: antibody detection limit dilution 1:64000.

Western blot: Approx 140kDa band observed in nuclear lysates of cell lines HEK293, MCF7 and NIH3T3 (calculated MW of 103kDa according to Human NP_066997.3 and Mouse NP_666167.3). The observed molecular weight is explained by its acetylation (Zheng et al, Mol Cell Biol. 2013 Dec;33(24):4960-70. PMID: 24126058). Recommended concentration: 0.5-2µg/ml.

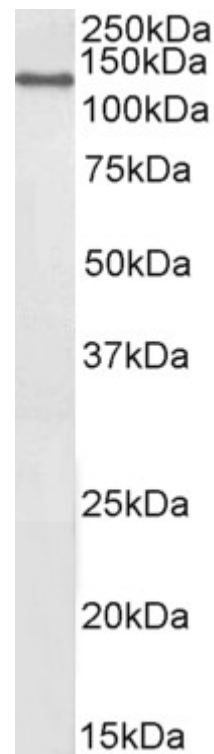
Species Reactivity

Tested: Human, Mouse

Expected from sequence similarity: Human, Mouse, Rat, Dog, Pig, Cow



EB12588 (0.5 μ g/ml) staining of HEK293 (A) and MCF7 (B) nuclear lysates (35 μ g protein in RIPA buffer). Primary incubation was 1 hour. Detected by chemiluminescence.



EB12588 (2 μ g/ml) staining of NIH3T3 nuclear lysates (35 μ g protein in RIPA buffer). Primary incubation was 1 hour. Detected by chemiluminescence.