



SZABO SCANDIC

Part of Europa Biosite

Produktinformation



Forschungsprodukte & Biochemikalien



Zellkultur & Verbrauchsmaterial



Diagnostik & molekulare Diagnostik



Laborgeräte & Service

Weitere Information auf den folgenden Seiten!
See the following pages for more information!



Lieferung & Zahlungsart

siehe unsere [Liefer- und Versandbedingungen](#)

Zuschläge

- Mindermengenzuschlag
- Trockeneiszuschlag
- Gefahrgutzuschlag
- Expressversand

SZABO-SCANDIC HandelsgmbH

Quellenstraße 110, A-1100 Wien

T. +43(0)1 489 3961-0

F. +43(0)1 489 3961-7

mail@szabo-scandic.com

www.szabo-scandic.com

[linkedin.com/company/szaboscandic](https://www.linkedin.com/company/szaboscandic) 



UK Office

Everest Biotech Ltd

Cherwell Innovation Centre
77 Heyford Park
Upper Heyford
Oxfordshire
OX25 5HD
UK

Enquiries:

info@everestbiotech.com

Sales:

sales@everestbiotech.com

Tech support:

support@everestbiotech.com

Tel: +44 (0)1869 238326

Fax: +44 (0)1869 238327

US Office

Everest Biotech c/o Abcore

405 Maple Street, Suite A106
Ramona,
CA 92065
USA

Inquiries:

info@everestbiotech.com

Sales:

usasales@everestbiotech.com

Tech support:

support@everestbiotech.com

Tel: 888-320-4628 (toll-free)

Fax: 888-841-9041

www.everestbiotech.com

**Research Use Only. Not for
diagnostic or therapeutic use.**

EB12622 - Goat Anti-AIFM1 Antibody

Size: 100µg specific antibody in 200µl



Target Protein

Principal Names: AIFM1, apoptosis-inducing factor, mitochondrion-associated, 1, AIF, CMTX4, COWCK, COXPD6, PDCD8, apoptosis-inducing factor 1, mitochondrial, programmed cell death 8 (apoptosis-inducing factor), striatal apoptosis-inducing factor

Official Symbol: AIFM1

Accession Number(s): NP_004199.1; NP_665811.1; NP_665812.1; NP_001124318.1

Human GeneID(s): [9131](#)

Non-Human GeneID(s): 26926 (mouse), 83533 (rat)

Important Comments: This antibody is expected to recognize isoform 1 (NP_004199.1), isoform 2 (NP_665811.1), isoform 3 (NP_665812.1) and isoform 4 (NP_001124318.1).

Immunogen

Peptide with sequence C-NEVAKLFNIHED, from the C Terminus of the protein sequence according to NP_004199.1; NP_665811.1; NP_665812.1; NP_001124318.1.

Please note the [peptide](#) is available for sale.

Purification and Storage

Purified from goat serum by ammonium sulphate precipitation followed by antigen affinity chromatography using the immunizing peptide.

Supplied at 0.5 mg/ml in Tris saline, 0.02% sodium azide, pH7.3 with 0.5% bovine serum albumin.

Aliquot and store at -20°C. Minimize freezing and thawing.

Applications Tested

Peptide ELISA: antibody detection limit dilution 1:128000.

Western blot: Approx 70kDa band observed in lysates of cell line Jurkat and NIH3T3, and in Mouse and Rat Heart and Kidney lysates. Approx. 65kDa observed in Pig Heart lysates (calculated MW of 66.9kDa according to Human NP_004199.1 and 66.8kDa according to Mouse NP_036149.1, Rat NP_112646.1 and Pig NP_001284561.1).

Recommended concentration: 0.01-0.1µg/ml. Primary incubation 1 hour at room temperature.

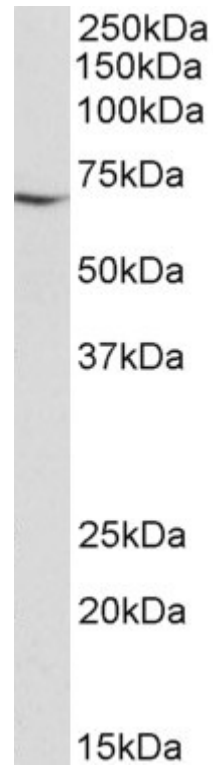
IHC: Paraffin embedded Human Liver. Recommended concentration: 5µg/ml.

Immunofluorescence: Strong expression of the protein seen in the Mitochondria of HeLa and U2OS cells. Recommended concentration: 10µg/ml.

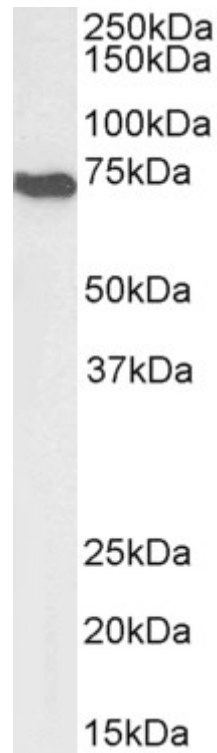
Species Reactivity

Tested: Human, Mouse, Rat, Pig

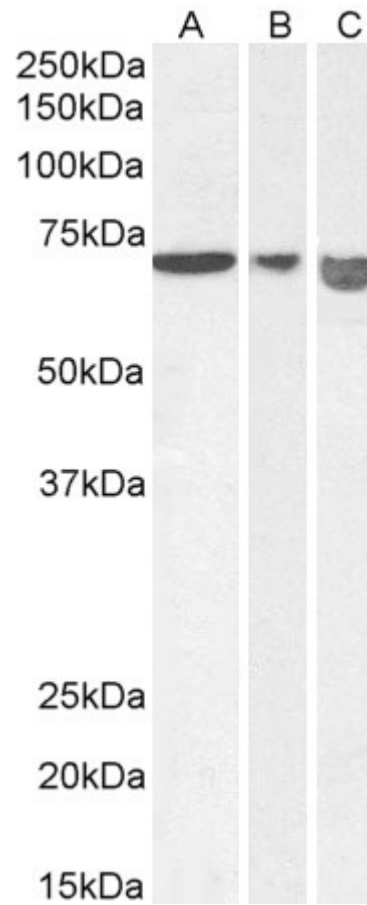
Expected from sequence similarity: Human, Mouse, Rat, Dog, Pig, Cow



EB12622 (0.01 µg/ml) staining of Jurkat lysate (35 µg protein in RIPA buffer). Detected by chemiluminescence.



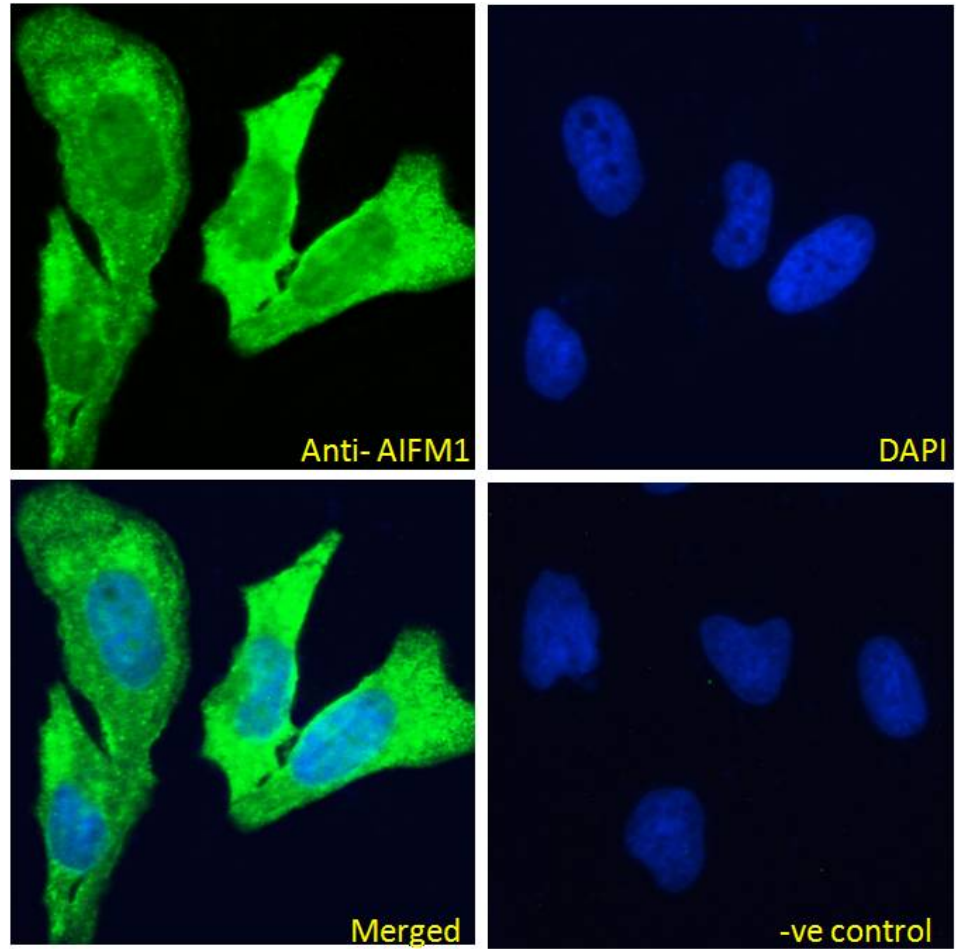
EB12622 (0.1 µg/ml) staining of NIH3T3 lysate (35 µg protein in RIPA buffer) Detected by chemiluminescence.



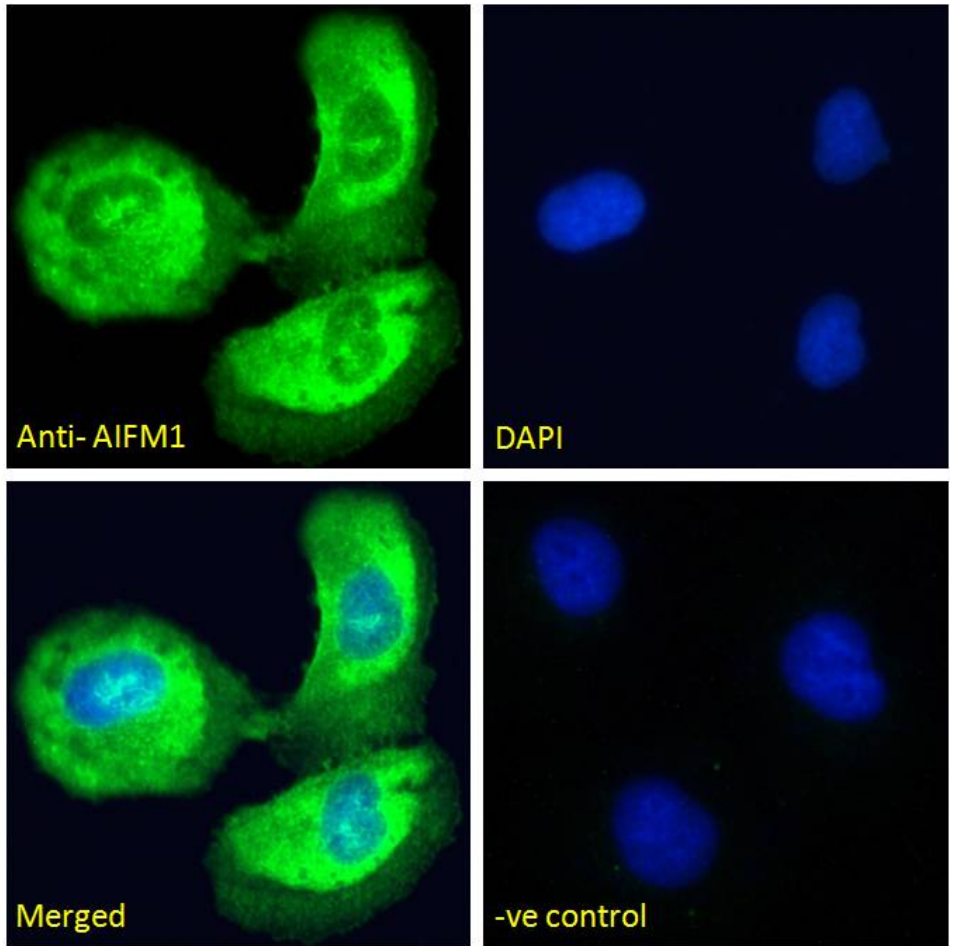
EB12622 (0.01µg/ml) staining of Mouse (A), Rat (B) and Pig (C) Heart lysate (35µg protein in RIPA buffer).
Detected by chemiluminescence.



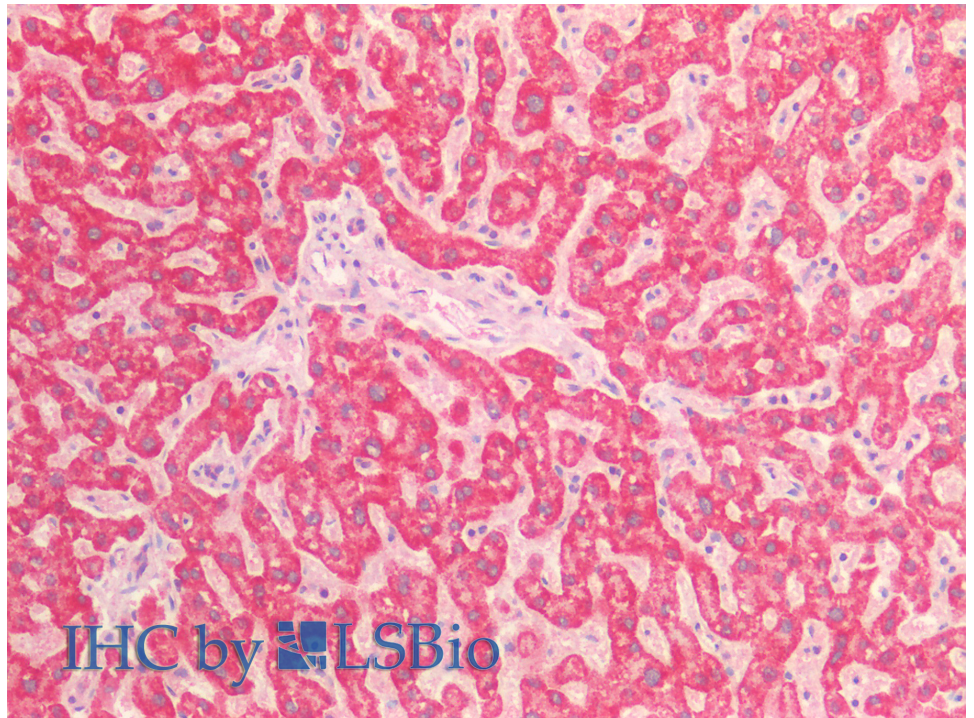
EB12622 (0.03 μ g/ml) staining of Mouse (A) and Rat (B) Kidney lysate (35 μ g protein in RIPA buffer). Detected by chemiluminescence



EB12622-P1 Immunofluorescence analysis of paraformaldehyde fixed HeLa cells, permeabilized with 0.15% Triton. Primary incubation 1hr (10 μ g/ml) followed by Alexa Fluor 488 secondary antibody (4 μ g/ml), showing Mitochondrial staining. The nuclear stain is DAPI (blue). Negative control: Unimmunized goat IgG (10 μ g/ml) followed by Alexa Fluor 488 secondary antibody (4 μ g/ml).



EB12622-P1 Immunofluorescence analysis of paraformaldehyde fixed U2OS cells, permeabilized with 0.15% Triton. Primary incubation 1hr (10ug/ml) followed by Alexa Fluor 488 secondary antibody (4ug/ml), showing Mitochondrial staining. The nuclear stain is DAPI (blue). Negative control: Unimmunized goat IgG (10ug/ml) followed by Alexa Fluor 488 secondary antibody (4ug/ml).



IHC by LSBio

EB12622 (5µg/ml) staining of paraffin embedded Human Liver. Steamed antigen retrieval with citrate buffer pH 6, AP-staining.