



SZABO SCANDIC

Part of Europa Biosite

Produktinformation



Forschungsprodukte & Biochemikalien



Zellkultur & Verbrauchsmaterial



Diagnostik & molekulare Diagnostik



Laborgeräte & Service

Weitere Information auf den folgenden Seiten!
See the following pages for more information!



Lieferung & Zahlungsart

siehe unsere [Liefer- und Versandbedingungen](#)

Zuschläge

- Mindermengenzuschlag
- Trockeneiszuschlag
- Gefahrgutzuschlag
- Expressversand

SZABO-SCANDIC HandelsgmbH

Quellenstraße 110, A-1100 Wien

T. +43(0)1 489 3961-0

F. +43(0)1 489 3961-7

mail@szabo-scandic.com

www.szabo-scandic.com

[linkedin.com/company/szaboscandic](https://www.linkedin.com/company/szaboscandic) 



UK Office

Everest Biotech Ltd

Cherwell Innovation Centre
77 Heyford Park
Upper Heyford
Oxfordshire
OX25 5HD
UK

Enquiries:

info@everestbiotech.com

Sales:

sales@everestbiotech.com

Tech support:

support@everestbiotech.com

Tel: +44 (0)1869 238326

Fax: +44 (0)1869 238327

US Office

Everest Biotech c/o Abcore

405 Maple Street, Suite A106
Ramona,
CA 92065
USA

Inquiries:

info@everestbiotech.com

Sales:

usasales@everestbiotech.com

Tech support:

support@everestbiotech.com

Tel: 888-320-4628 (toll-free)

Fax: 888-841-9041

www.everestbiotech.com

**Research Use Only. Not for
diagnostic or therapeutic use.**

EB12632 - Goat Anti-BMP1 (aa284-296) Antibody

Size: 100µg specific antibody in 200µl



Target Protein

Principal Names: BMP1, bone morphogenetic protein 1, OI13, PCOLC, PCP, PCP2, TLD, mammalian tolloid protein, procollagen C-endopeptidase, procollagen C-proteinase

Official Symbol: BMP1

Accession Number(s): NP_001190.1; NP_006120.1

Human GeneID(s): [649](#)

Non-Human GeneID(s): 12153 (mouse), 83470 (rat)

Important Comments: This antibody is expected to recognize both reported isoforms (NP_001190.1; NP_006120.1).

Immunogen

Peptide with sequence C-DTIVPKYEVNGVK, from the internal region of the protein sequence according to NP_001190.1; NP_006120.1.

Please note the [peptide](#) is available for sale.

Purification and Storage

Purified from goat serum by ammonium sulphate precipitation followed by antigen affinity chromatography using the immunizing peptide.

Supplied at 0.5 mg/ml in Tris saline, 0.02% sodium azide, pH7.3 with 0.5% bovine serum albumin.

Aliquot and store at -20°C. Minimize freezing and thawing.

Applications Tested

Peptide ELISA: antibody detection limit dilution 1:128000.

Western blot: Approx 110kDa band observed in Human Heart and Human Kidney lysates and approx 100kDa band observed in Rat Heart lysates and in cell lysates of cell line NIH3T3 (calculated MW of 111kDa according to Human NP_006120.1, 97.7kDa according to Mouse XP_011243231.1, and 93.5kDa according to Rat XP_006252347.1). Recommended concentration: 1-3µg/ml. Primary incubation was 1 hour. Preliminary testing was unsuccessful on Pig Heart and Kidney for this particular batch.

IHC: Paraffin embedded Human Brain (Cortex) and Placenta. Recommended concentration: 5µg/ml.

Species Reactivity

Tested: Human, Mouse, Rat

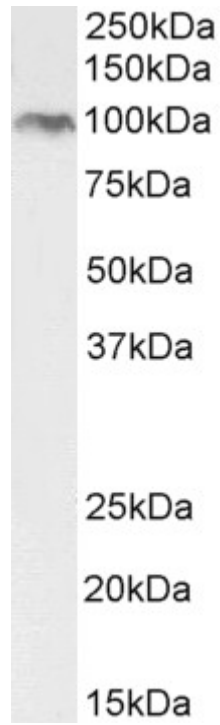
Expected from sequence similarity: Human, Mouse, Rat, Dog, Pig, Cow



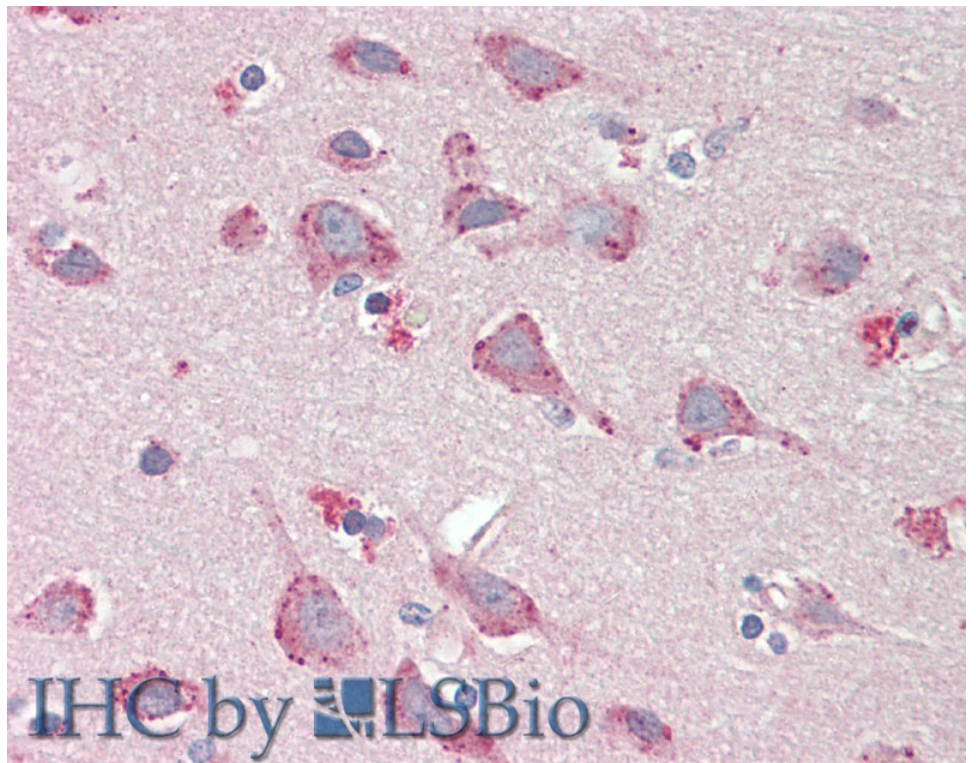
EB12632 (1 μ g/ml) staining of Human Heart (A) and Kidney (B) lysates (35 μ g protein in RIPA buffer). Detected by chemiluminescence.



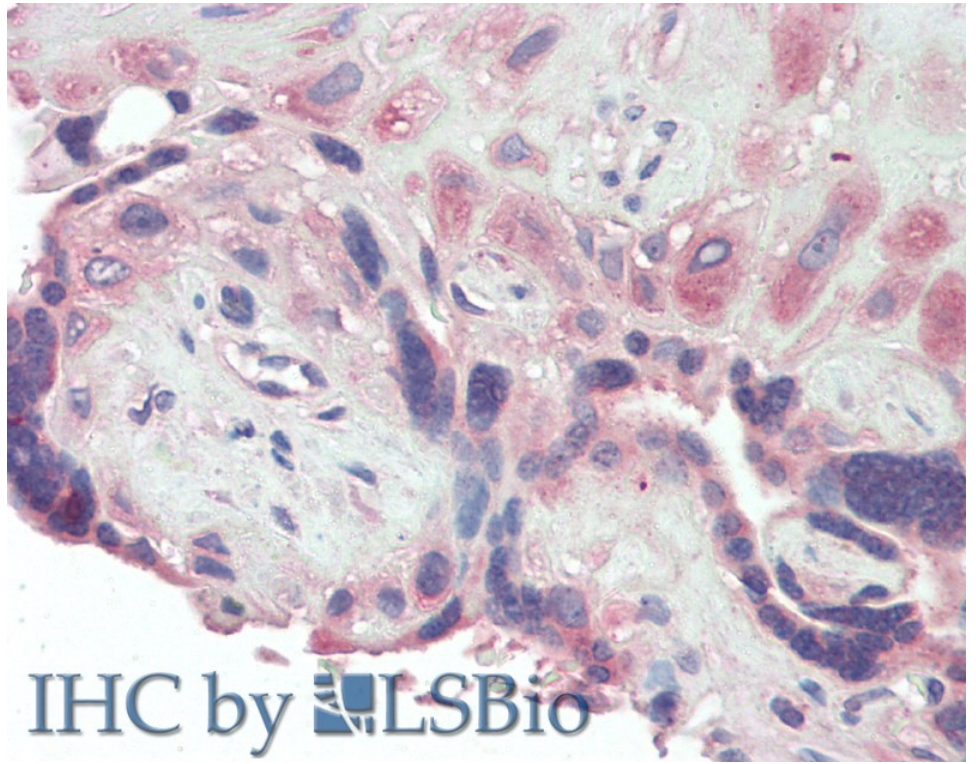
EB12632 (2 μ g/ml) staining of Rat Heart lysate (35 μ g protein in RIPA buffer). Detected by chemiluminescence.



EB12632 (2 μ g/ml) staining of NIH3T3 cell lysate (35 μ g protein in RIPA buffer). Detected by chemiluminescence.



EB12632 (5 μ g/ml) staining of paraffin embedded Human Cortex. Steamed antigen retrieval with citrate buffer pH 6, AP-staining.



EB12632 (5µg/ml) staining of paraffin embedded Human Placenta. Steamed antigen retrieval with citrate buffer pH 6, AP-staining.