



# SZABO SCANDIC

Part of Europa Biosite

## Produktinformation



Forschungsprodukte & Biochemikalien



Zellkultur & Verbrauchsmaterial



Diagnostik & molekulare Diagnostik



Laborgeräte & Service

Weitere Information auf den folgenden Seiten!  
See the following pages for more information!



### Lieferung & Zahlungsart

siehe unsere [Liefer- und Versandbedingungen](#)

### Zuschläge

- Mindermengenzuschlag
- Trockeneiszuschlag
- Gefahrgutzuschlag
- Expressversand

### SZABO-SCANDIC HandelsgmbH

Quellenstraße 110, A-1100 Wien

T. +43(0)1 489 3961-0

F. +43(0)1 489 3961-7

[mail@szabo-scandic.com](mailto:mail@szabo-scandic.com)

[www.szabo-scandic.com](http://www.szabo-scandic.com)

[linkedin.com/company/szaboscandic](https://www.linkedin.com/company/szaboscandic) 



## UK Office

### Everest Biotech Ltd

Cherwell Innovation Centre  
77 Heyford Park  
Upper Heyford  
Oxfordshire  
OX25 5HD  
UK

Enquiries:

[info@everestbiotech.com](mailto:info@everestbiotech.com)

Sales:

[sales@everestbiotech.com](mailto:sales@everestbiotech.com)

Tech support:

[support@everestbiotech.com](mailto:support@everestbiotech.com)

Tel: +44 (0)1869 238326

Fax: +44 (0)1869 238327

## US Office

### Everest Biotech c/o Abcore

405 Maple Street, Suite A106  
Ramona,  
CA 92065  
USA

Inquiries:

[info@everestbiotech.com](mailto:info@everestbiotech.com)

Sales:

[usasales@everestbiotech.com](mailto:usasales@everestbiotech.com)

Tech support:

[support@everestbiotech.com](mailto:support@everestbiotech.com)

Tel: 888-320-4628 (toll-free)

Fax: 888-841-9041

[www.everestbiotech.com](http://www.everestbiotech.com)

**Research Use Only. Not for  
diagnostic or therapeutic use.**

## EB12688 - Goat Anti-GABRG2 (aa384-396) Antibody

Size: 100µg specific antibody in 200µl



### Target Protein

**Principal Names:** GABRG2, gamma-aminobutyric acid (GABA) A receptor, gamma 2, CAE2, ECA2, GEFSP3, GABA(A) receptor subunit gamma-2, GABA(A) receptor, gamma 2, gamma-aminobutyric acid receptor subunit gamma-2

**Official Symbol:** GABRG2

**Accession Number(s):** NP\_944494.1; NP\_000807.2; NP\_944493.2

**Human GeneID(s):** [2566](#)

**Non-Human GeneID(s):** 14406 (mouse), 29709 (rat)

**Important Comments:** This antibody is expected to recognize all three reported isoforms (NP\_944494.1; NP\_000807.2; NP\_944493.2).

### Immunogen

Peptide with sequence C-KAPTIDIRPRSAT, from the internal region of the protein sequence according to NP\_944494.1; NP\_000807.2; NP\_944493.2.

Please note the [peptide](#) is available for sale.

### Purification and Storage

Purified from goat serum by ammonium sulphate precipitation followed by antigen affinity chromatography using the immunizing peptide.

Supplied at 0.5 mg/ml in Tris saline, 0.02% sodium azide, pH7.3 with 0.5% bovine serum albumin.

Aliquot and store at -20°C. Minimize freezing and thawing.

### Applications Tested

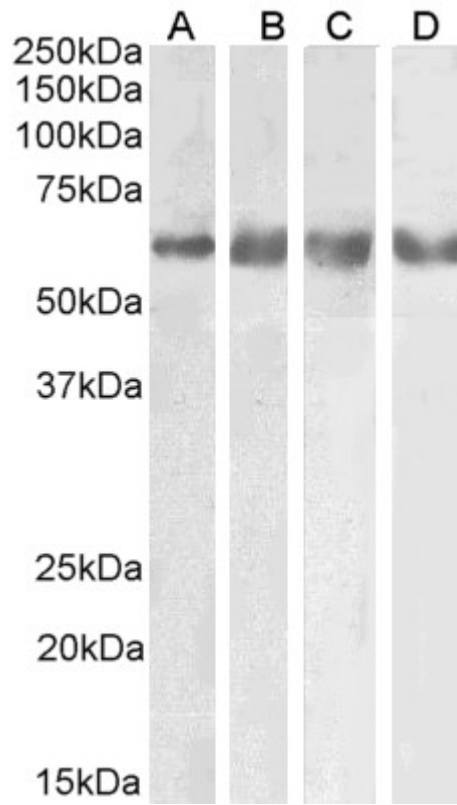
**Peptide ELISA:** antibody detection limit dilution 1:16000.

**Western blot:** Approx 60kDa band observed in Human, Mouse, Rat and Pig Brain lysates (calculated MW of 59.3kDa according to Human NP\_944493.2, 55.0kDa according to Mouse NP\_032099.1, 54.0kDa according to Rat NP\_899156.1 and 55.2kDa according to Pig XP\_003134135.1). Recommended concentration: 0.1-0.3µg/ml.

### Species Reactivity

**Tested:** Human, Mouse, Rat, Pig

**Expected from sequence similarity:** Human, Mouse, Rat, Dog, Pig, Cow



EB12688 (0.1 $\mu$ g/ml) staining of Human Cerebellum (A), Mouse (B), Rat (C) and Pig (D) Brain lysate (35 $\mu$ g protein in RIPA buffer). Primary incubation was 1 hour. Detected by chemiluminescence.